



# Comparison of the computed tomography findings in COVID-19 and other viral pneumonia in immunocompetent adults: a systematic review and meta-analysis

Stephan Altmayer<sup>1,2</sup> · Matheus Zanon<sup>1,3</sup> · Gabriel Sartori Pacini<sup>3</sup> · Guilherme Watte<sup>1,2,3</sup> · Marcelo Cardoso Barros<sup>1,2</sup> · Tan-Lucien Mohammed<sup>4</sup> · Nupur Verma<sup>4</sup> · Edson Marchiori<sup>5</sup> · Bruno Hochhegger<sup>1,2,3</sup> 

Received: 16 April 2020 / Revised: 25 May 2020 / Accepted: 5 June 2020 / Published online: 27 June 2020  
© European Society of Radiology 2020

## Abstract

**Objectives** To compare the chest computed tomography (CT) findings of coronavirus disease 2019 (COVID-19) to other non-COVID viral pneumonia.

**Methods** MEDLINE, EMBASE, and Cochrane databases were searched through April 04, 2020, for published English language studies. Studies were eligible if they included immunocompetent patients with up to 14 days of viral pneumonia. Subjects had a respiratory tract sample test positive for COVID-19, adenovirus, influenza A, rhinovirus, parainfluenza, or respiratory syncytial virus. We only included observational studies and case series with more than ten patients. The pooled prevalence of each chest CT pattern or finding was calculated with 95% confidence intervals (95% CI).

**Results** From 2263 studies identified, 33 were eligible for inclusion, with a total of 1911 patients (COVID-19,  $n = 934$ ; non-COVID,  $n = 977$ ). Frequent CT features for both COVID-19 and non-COVID viral pneumonia were a mixed pattern of ground-glass opacity (GGO) and consolidation (COVID-19, 0.37; 0.17–0.56; non-COVID, 0.46; 0.35–0.58) or predominantly GGO pattern (COVID-19, 0.42; 0.28–0.55; non-COVID 0.25; 0.17–0.32), bilateral distribution (COVID-19, 0.81; 0.77–0.85; non-COVID, 0.69; 0.54–0.84), and involvement of lower lobes (COVID-19, 0.88; 0.80–0.95; non-COVID, 0.61; 0.50–0.82). COVID-19 pneumonia presented a higher prevalence of peripheral distribution (COVID-19 0.77; 0.67–0.87; non-COVID 0.34; 0.18–0.49), and involvement of upper (COVID-19, 0.77; 0.65–0.88; non-COVID 0.18; 0.10–0.27) and middle lobes (COVID-19, 0.61; 0.47–0.76; non-COVID 0.24; 0.11–0.38).

**Conclusion** Except for a higher prevalence of peripheral distribution, involvement of upper and middle lobes, COVID-19, and non-COVID viral pneumonia had overlapping chest CT findings.

---

**Electronic supplementary material** The online version of this article (<https://doi.org/10.1007/s00330-020-07018-x>) contains supplementary material, which is available to authorized users.

---

✉ Bruno Hochhegger  
brunoho@ufcspa.edu.br

<sup>1</sup> Medical Imaging Research Lab, LABIMED, Department of Radiology, Pavilhão Pereira Filho Hospital, Irmandade Santa Casa de Misericórdia de Porto Alegre, Av. Independência, 75, Porto Alegre 90020160, Brazil

<sup>2</sup> Postgraduate Program in Medicine and Health Sciences, Pontifícia Universidade Católica do Rio Grande do Sul, Av. Ipiranga, 6690, Porto Alegre 90619900, Brazil

<sup>3</sup> Graduate Program in Pathology, Federal University of Health Sciences of Porto Alegre, R. Sarmento Leite, 245, Porto Alegre 90050170, Brazil

<sup>4</sup> Department of Radiology, College of Medicine, University of Florida, 1600 SW Archer Rd, Gainesville, FL 32610, USA

<sup>5</sup> Department of Radiology, Federal University of Rio de Janeiro, Av. Carlos Chagas Filho, 373, Rio de Janeiro 21941902, Brazil

## Key Points

- *Most common CT findings of coronavirus disease 2019 (COVID-19) were a predominant pattern of ground-glass opacity (GGO), followed by a mixed pattern of GGO and consolidation, bilateral disease, peripheral distribution, and lower lobe involvement.*
- *Most frequent CT findings of non-COVID viral pneumonia were a predominantly mixed pattern of GGO and consolidation, followed by a predominant pattern of GGO, bilateral disease, random or diffuse distribution, and lower lobe involvement.*
- *COVID-19 pneumonia presented a higher prevalence of peripheral distribution, and involvement of upper and middle lobes compared with non-COVID viral pneumonia*

**Keywords** Computed tomography · X-ray · Coronavirus · COVID-19 · Viral pneumonia

## Abbreviations

ACR	American College of Radiology
AdV	Adenovirus
COVID-19	Coronavirus disease 2019
CT	Chest tomography
EQUATOR	Enhancing the Quality and Transparency of Health Research
GGO	Ground-glass opacity
MOOSE	Meta-analysis Of Observational Studies in Epidemiology
PIV	Parainfluenza virus
PRISMA	Preferred Reporting Items for Systematic Reviews
RNV	Rhinovirus
RSV	Respiratory syncytial virus
RT-PCR	Reverse transcriptase polymerase chain reaction

## Introduction

The emergence of the novel coronavirus 2019 disease (COVID-19) has caused an international outbreak of respiratory illness that ranges from mild, self-limited disease to severe pneumonia and death [1, 2]. The rapid spread of the virus outside China despite local and global attempts to restrain dissemination has garnered international attention, and the WHO declared this outbreak a global pandemic in early March 2020 [3]. Thus far, over one million cumulative cases have been reported worldwide, with a mortality rate of around five percent of cases [3].

Most patients present with fever, dry cough, and dyspnea in reported cohorts [4, 5]. Nearly 90% of hospitalized patients have abnormal findings on chest CT [5, 6], with bilateral ground-glass opacities (GGO) as one of the most common results reported on CT scans of patients with COVID-2019 [5, 6]. Other manifestations, such as consolidations, lower lobe predilection, and predominantly peripheral distribution of disease, are often reported in CT studies of patients with COVID-2019 [7–16]. In light of these common imaging manifestations, some authors have suggested considering chest CT

as a primary tool for detection of COVID-2019 in epidemic areas as many patients have negative reverse transcriptase polymerase chain reaction (RT-PCR) for coronavirus on the initial presentation [6]. Nonetheless, these imaging findings are not specific to COVID-2019 and could be also be found in other viral pneumonia (e.g., influenza, adenovirus) and non-infectious diseases [17–39]. Furthermore, 6 to 25% of healthy asymptomatic patients can present GGO on chest CT scans, finding which has been described as one of the hallmarks of COVID-2019 [40, 41].

The aim of this manuscript was to perform a systematic review and meta-analysis of the chest CT findings of COVID-2019 and other viral pneumonia in immunocompetent adults to evaluate if any discriminatory imaging features may help to distinguish COVID-19 from other respiratory viruses.

## Methods

### Search strategy

This study was reported following Enhancing the Quality and Transparency of Health Research (EQUATOR) Reporting Guidelines, including the Preferred Reporting Items for Systematic Reviews (PRISMA) and Meta-analysis Of Observational Studies in Epidemiology (MOOSE) guidelines. We searched all available literature published in the PubMed-MEDLINE, EMBASE, and Cochrane databases through April 04, 2020. The databases were comprehensively searched using the terms “pneumonia,” “viral,” and “imaging” OR “computed tomography.” Equivalent terms for each database and detailed search strategy are included in Supplementary File 1.

### Inclusion and exclusion criteria

Studies were eligible for inclusion if the following criteria were present: (1) subjects had a positive RT-PCR assay in a respiratory tract sample for one of the following viruses: 2019 novel coronavirus (2019-nCoV), adenovirus (AdV), influenza

A H1N1; rhinovirus (RNV); parainfluenza virus (PIV); respiratory syncytial virus (RSV); (2) report of chest computed tomography (CT) findings of viral pneumonia, including at least one of the following imaging features: predominant CT pattern or CT findings; (3) cases of acute infections up to 14 days of onset of symptoms; (4) immunocompetent patients  $\geq 16$  years; (5) design of the study as randomized and non-randomized controlled trials, observational studies, or case series.

To limit heterogeneity, we only included AdV, H1N1, RNV, RSV, and PIV as these were the most prevalent pathogens of viral pneumonia in immunocompetent hosts in previous studies [42–45]. We did not include other influenza A strains, such as H7N9, H5N1, H1N2, and H3N2.

Exclusion criteria were the following: (1) study population that included immunocompromised and did not stratify the analysis from immunocompetent patients; (2) lack of data regarding age and/or immunocompetency status; (3) case reports or series with less than ten subjects, letters to the editor, reviews, or meta-analysis; (4) studies not published in English; (5) studies with animals or in vitro.

## Data extraction

Two reviewers independently reviewed all included articles to extract data. Disagreements were solved by consensus or with the assistance of a third reviewer with more than 10 years of experience in thoracic radiology. Imaging features were defined following the Fleischner Society's glossary of terms in thoracic radiology [46].

From each study, we extracted the number of patients presenting the following imaging features: main CT pattern (predominantly or purely GGO; predominantly or purely consolidation; mixed GGO and consolidation; absence of GGO or consolidation), bilateral distribution; axial predominance (central; peripheral; random or diffuse); lobar predominance (upper lobes; middle lobes; lower lobes; random or diffuse ( $\geq 3$  lobes)).

Additionally, we also obtained the number of patients presenting the following chest CT findings: GGO, consolidation, nodules (tree-in-bud or centrilobular nodules), interstitial changes (interlobular septal thickening, reticulation, fibrosis), "crazy-paving" pattern, linear opacities, air bronchograms, bronchial wall thickening, vascular enlargement, reverse halo sign, pleural effusion, and mediastinal lymphadenopathy.

We only included data when studies described a per-patient report of the CT findings. As per-lesion analyses could be misleading, we considered the data as "not available" when the authors only described the absolute number of lesions, e.g., the number of GGO lesions. In studies which not all participating patients underwent a chest CT, we considered as the number of patients with a chest CT scan as the study sample size. When multiple publications including the same

population was identified from an author group, we only included the most comprehensive study to avoid duplication of data.

## Study quality assessment

Two reviewers independently rated the quality of included studies using the National Institutes of Health Quality Assessment Tool for Case Series Studies [47]. Studies were not excluded due to their quality score to increase transparency and ensure all available evidence in this area was reported.

## Statistical analysis

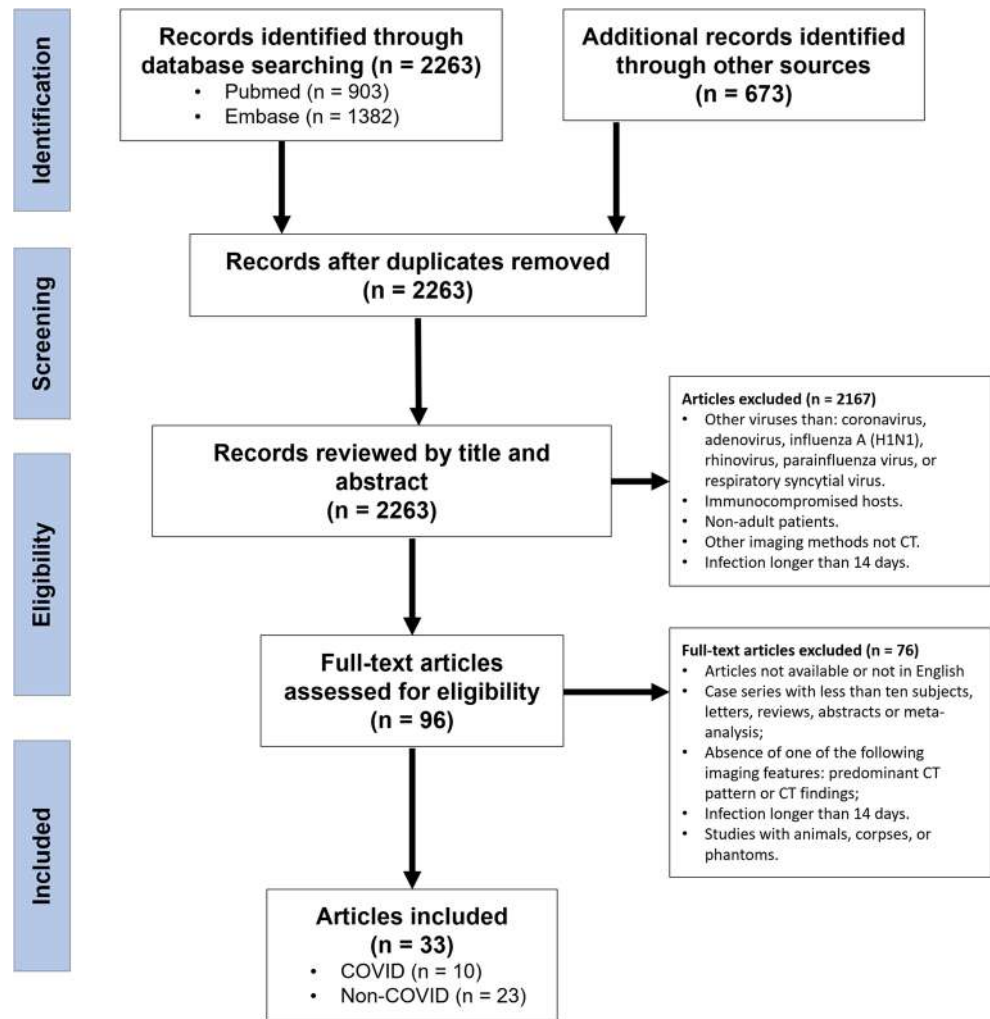
All statistical analyses were performed using Stata version 15.0 (StataCorp LP). We used the Metaprop command to calculate the pooled prevalences of the included variables and their corresponding 95% confidence intervals (95% CI). The  $I^2$  index was used to quantify the extent of heterogeneity. Due to limitations of the meta-analysis of variables with extreme proportions, i.e., zero (0%) or one (100%), the variable was added "n + 1" (in case of 0%) or subtracted "n-1" (in cases of 100%) when appropriate. Random-effects models were used as elevated levels of heterogeneity were expected due to differences in the population and methodology of the articles. We assessed the heterogeneity in main characteristics, including date of publication and study quality.

## Results

### Study characteristics

The initial search yielded 2263 studies, from which 96 were reviewed, and 33 met the inclusion criteria. A total of 10 studies on COVID-19 [7–16], and 23 studies on non-COVID viral pneumonias were included (Fig. 1) [17–39]. Although the article by Ng et al included a 10-year-old child, this patient had a normal chest CT and was removed from this analysis [13]. A total of 1911 patients were included, of which 934 (48.9%) were in the COVID group and 977 (51.1%) were in the non-COVID group. Summary findings of the studies included in this meta-analysis were presented in Tables 1 and 2. Methodologic quality was considered fair in all the included studies [7–39]. Publication bias was not able to be assessed due to the heterogeneity in the means of reporting data among different studies. In the non-COVID studies, H1N1 was the main pathogen in 19, AdV in 4, and in one study, there were multiple pathogens in the sample (AdV, H1N1, RSV, and PIV).

**Fig. 1** Preferred Reporting Items for Systematic Reviews and Meta-Analyses (PRISMA) flow diagram



\* Note. - The same study could be excluded for multiple reasons.  
COVID = coronavirus disease 2019; CT = computed tomography

**Table 1** Main characteristics of COVID pneumonia studies (n = 934 patients)

Study	Pathogen	Sample size	Male, no. (%)	Age, mean, (SD) [IQR], years
Bai et al (2020), China	COVID-19	219	119 (54.3)	44.8 (14.5)
Bernheim et al (2020), China	COVID-19	121	61 (50.4)	45.3 (16)
Caruso et al (2020), Italy	COVID-19	158	83 (52.4)	57 [18–80]
Inui et al (2020), Japan	COVID-19	112	59 (52.7)	60 (17)
Li et al (2020), China	COVID-19	51	28 (54.9)	58 [26–83]
Liu et al (2020), China	COVID-19	73	41 (56.2)	41.6 (14.5)
Ng et al (2020), China	COVID-19	20	13 (61.9)	56 [37–65]
Pan et al (2020), China	COVID-19	63	33 (52.4)	44.9 (15.2)
Shi et al (2020), China	COVID-19	66	35 (53.0)	49.5 (11)
Song et al (2020), China	COVID-19	51	25 (49.0)	49 (16)

CI, confidence intervals; COVID, coronavirus disease; IQR, interquartile range; SD, standard deviation

**Table 2** Main characteristics of non-COVID pneumonia studies ( $n = 977$  patients)

Study	Pathogen	Sample size	Male, no. (%)	Age, mean, (SD) [IQR], years
Amorim et al (2013), Brazil	H1N1	71	33 (46.5)	41.3 [16–92]
Cho et al (2011), South Korea	H1N1	37	21 (56.8)	46.1 (17.3)
Grieser et al (2012), Germany	H1N1	23	16 (69.6)	42.2 (16)
Henzler et al (2010), Germany	H1N1	10	6 (60.0)	45.3 [27–65]
Hwang et al (2013), South Korea	AdV	11	11 (100)	NA
Kang et al (2012), South Korea	H1N1	76	42 (55.3)	52 [18–86]
Karadeli et al (2011), Turkey	H1N1	52	21 (40.4)	41 (1.3)
Kim et al (2011), South Korea	H1N1	11	NA	30.7 [18–79]
Ishiguro et al (2016), Japan	H1N1	20	16 (80.0)	59.9 (16.4)
Lee et al (2012), South Korea	H1N1	45	45 (100)	20 [19–24]
Li et al (2011), China	H1N1	106	54 (50.9)	31.7 (15.7)
Li et al (2011), China	H1N1	26	16 (61.5)	53 [40–62]
Marchiori et al (2010), Brazil	H1N1	20	11 (55.0)	42.7 [24–62]
Nicolini et al (2012), Italy	H1N1	28	15 (53.6)	31.7 [26–78]
Park et al (2016), South Korea	AdV	104	98 (94.2)	20.1 [19–24]
Qi et al (2014), China	H1N1	16	0	27 [22–41]
Shiley et al (2010), USA	H1N1, AdV, RSV, PIV	18	5 (27.8)	55
Sohn et al (2013), South Korea	H1N1	41	21 (51.2)	46 [24–63]
Son et al (2011), South Korea	H1N1	20	13 (65.0)	46.5 [18–69]
Song et al (2011), South Korea	H1N1	30	6 (20.0)	36.6 (16.3)
Tanaka et al (2011), Japan	H1N1	10	6 (60.0)	61.3 [26–85]
Valente et al (2011), Italy	H1N1	50	NA	40.9 [21–76]
Yoon et al (2017), South Korea	AdV	152	152 (100)	21 (2.1)

AdV, adenovirus; CI, confidence intervals; H1N1, influenza A H1N1; IQR, interquartile range; NA, not available; PIV, parainfluenza virus; RSV, respiratory syncytial virus; SD, standard deviation

### Pooled prevalence of CT findings

Main CT features of COVID-19 and other viral pneumonia are summarized in Table 3. COVID-19 most commonly manifested with either a predominantly GGO pattern (0.42; 95% CI 0.28–0.55) (Fig. 2a), or a mixed pattern of GGO and consolidation (0.37; 95% CI 0.17–0.56) (Fig. 3a). Non-COVID viral pneumonia most often presented a mixed pattern of GGO and consolidation (0.46; 95% CI 0.35–0.58) (Fig. 3b) that was more commonly seen compared with a predominantly GGO pattern (0.25; 95% CI 0.17–0.32) (Fig. 2b). The predominant consolidation pattern was the least common of both groups (COVID-19, 0.04; 95% CI 0.01–0.07; vs non-COVID, 0.17; 95% CI 0.11–0.23) (Fig. 4). Heterogeneity was high and significant for all analyses on predominant CT patterns in both groups.

In both COVID-19 and non-COVID viral pneumonia, chest CT findings were bilateral (COVID-19, 0.81; 95% CI 0.77–0.85; non-COVID, 0.69; 0.54–0.84) (Supplementary Fig. 1) and most often involved the lower lobes (COVID-19, 0.88; 95% CI 0.80–0.95; non-COVID, 0.61; 0.44–0.78) (Supplementary Fig. 2). However, COVID-19 pneumonia presented a higher prevalence of peripheral distribution (COVID-19, 0.77; 95% CI 0.67–0.87; non-COVID, 0.34; 95% CI 0.18–

0.49) (Supplementary Fig. 3), and involvement of upper lobes (COVID-19, 0.77; 95% CI 0.65–0.88; non-COVID, 0.18; 95% CI 0.10–0.27) (Supplementary Fig. 4) and middle lobe (COVID-19, 0.61; 95% CI 0.47–0.76; non-COVID, 0.24; 95% CI 0.11–0.38) (Supplementary Fig. 5). The most prevalent axial distribution of lesions in non-COVID was a diffuse or random distribution (0.50; 95% CI 0.35–0.65).

GGO was the most common CT finding, found in up to 0.92 (95% CI, 0.90–0.97) of COVID-19 and 0.80 (95% CI, 0.74–0.85) of non-COVID (Supplementary Fig. 6), followed by consolidation (COVID-19, 0.50; 95% CI 0.33–0.66; non-COVID, 0.69, 95% CI 0.61–0.77) (Supplementary Fig. 7). Pleural effusion was rare in COVID-19 (0.03; 95% CI 0.01–0.04), but more common in other viral pneumonia (0.25; 95% CI 0.18–0.32) (Supplementary Fig. 8). A case of COVID-19 presenting the most prevalent CT findings is shown in Fig. 5. We also present a patient diagnosed with H1N1 and typical images features of COVID-19 (Fig. 6).

### Discussion

The most prevalent chest CT findings in patients with COVID-19 were a predominantly GGO pattern (0.42;



**Table 3** Main CT features of COVID-19 pneumonia compared with other viral pneumonia

Imaging features	COVID-19 Pooled prevalence (95% CI)	Non-COVID Pooled prevalence (95% CI)
Predominant CT pattern		
Predominantly GGO	0.42 (0.28–0.55)	0.25 (0.17–0.32)
Predominantly consolidation	0.04 (0.01–0.07)	0.17 (0.11–0.23)
Mixed GGO and consolidation	0.37 (0.17–0.56)	0.46 (0.35–0.58)
Absence of GGO or consolidation	0.09 (0.04–0.14)	0.05 (0.03–0.07)
Location		
Bilateral	0.81 (0.77–0.85)	0.69 (0.54–0.84)
Axial distribution		
Peripheral	0.77 (0.67–0.87)	0.34 (0.18–0.49)
Random or diffuse	0.21 (0.09–0.34)	0.50 (0.35–0.65)
Lobe involvement (craniocaudal)		
Upper lobes	0.77 (0.65–0.88)	0.18 (0.10–0.27)
Middle lobes	0.61 (0.47–0.76)	0.24 (0.11–0.38)
Lower lobes	0.88 (0.80–0.95)	0.61 (0.44–0.78)
Findings		
GGO	0.92 (0.89–0.96)	0.80 (0.74–0.85)
Consolidation	0.47 (0.32–0.63)	0.69 (0.61–0.77)
Nodules	0.14 (0.04–0.24)	0.30 (0.19–0.40)
Interstitial changes*	0.27 (0.11–0.43)	0.27 (0.19–0.35)
Pleural effusion	0.03 (0.01–0.04)	0.25 (0.18–0.32)

CI, confidence intervals; COVID, coronavirus disease; CT, computed tomography; GGO, ground-glass opacity

\*Interlobular septal thickening, reticulation, fibrosis

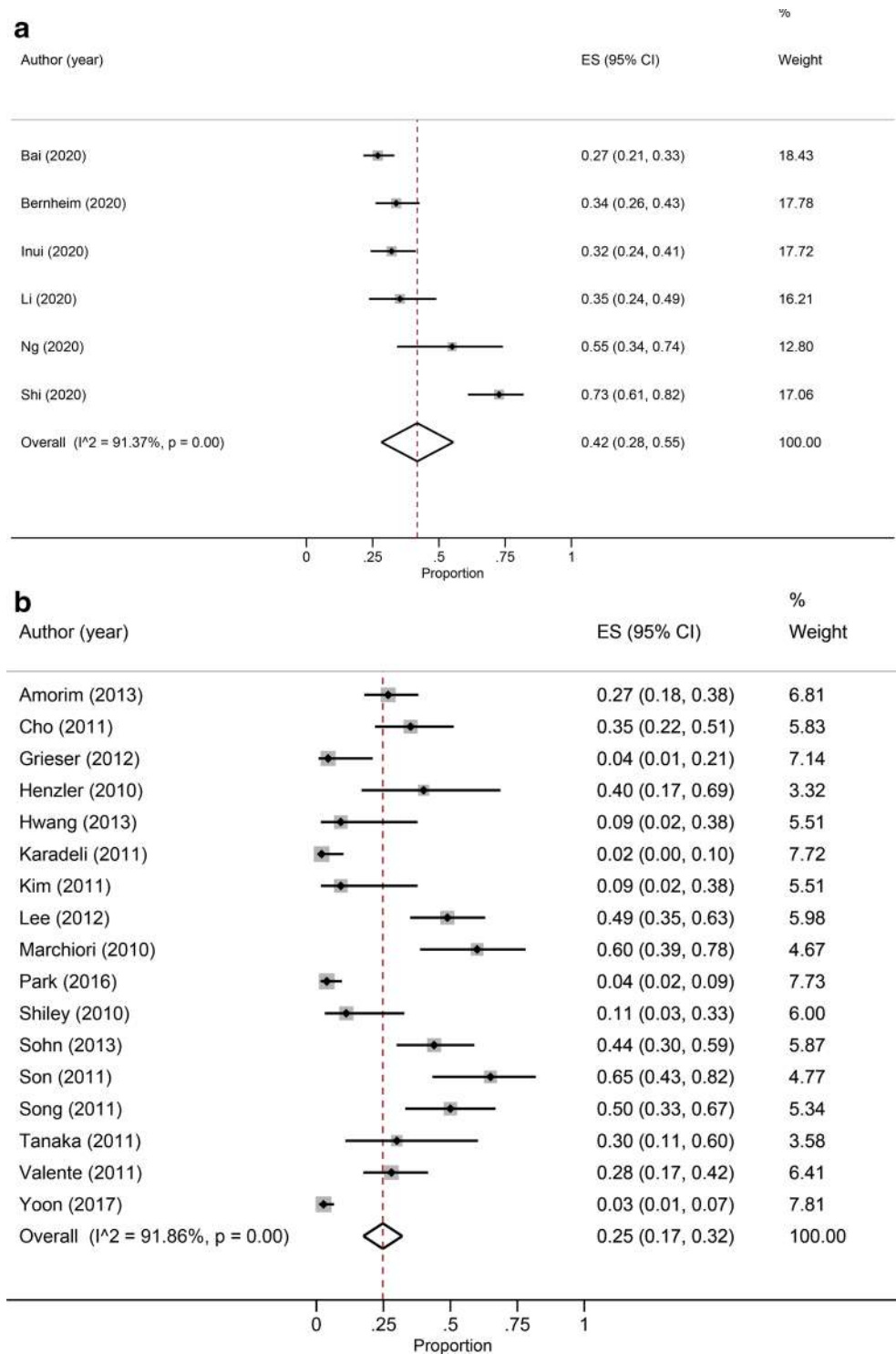
95% CI 0.28–0.55), followed by a mixed pattern of GGO and consolidation (0.37; 95% CI 0.17–0.56), bilateral disease (0.81; 95% CI 0.77–0.85), and involvement of the lower lobes (0.88; 95% CI 0.80–0.95). The most prevalent findings in non-COVID viral pneumonia were a mixed pattern of GGO and consolidation (0.49; 95% CI 0.39–0.62), followed by a predominantly GGO pattern (0.25; 95% CI 0.17–0.32), bilateral disease (0.69; 95% CI 0.53–0.85), and involvement of the lower lobes (0.61; 95% CI 0.44–0.78). Compared with other viral pneumonia, COVID-19 demonstrated a higher prevalence of peripheral distribution (0.77; 95% CI 0.67–0.87), and involvement of upper (0.77; 95% CI 0.65–0.88) and middle lobes (0.61; 95% CI 0.47–0.76).

The prevalence of upper and middle zone disease observed in the non-COVID population is likely underestimated. Many authors in this group used the terms “random zone predominance” or “diffuse involvement” referring to patients with involvement of multiple or all lobes, instead of describing which individual lobes were affected [17, 18, 23, 34]. Thus, patients in these two categories were not included in the analysis of individual lobar distribution, even though some of them possibly had upper and middle zone involvement. All the COVID-19 studies individually described which lobes were affected in their population.

The use of chest CT scan as a primary tool for screening of patients under investigation for COVID-19 is fraught with significant issues [48, 49]. This approach will result in an increased number of CTs in stable patients that otherwise would not be scanned, leading to increased costs and reduced access to imaging suites, as the entire room would have to be extensively sanitized after every case with suspicion for COVID-19 [49, 50]. Moreover, the CT scanner may act as a fomite of COVID-19 transmission. Therefore, the American College of Radiology (ACR) urges caution on such approach as a standard CT (especially in the early phases of COVID-19) should not dissuade a patient from viral testing, quarantine, and appropriate treatment [51]. Also, an abnormal CT should not be seen as diagnostic, as the same pattern may be seen in other viral pneumonia, as demonstrated in this study. Such resemblance should be acknowledged as the COVID-19 emerged simultaneously to the current seasonal influenza in the Northern Hemisphere.

There are two systematic reviews on CT findings on COVID-19 available in the literature with similar results to our study regarding the most common imaging findings in COVID-19 [52, 53]. Nonetheless, our review differs from those two by not including case series of less than 10 patients, population with pediatric or immunocompromised patients,

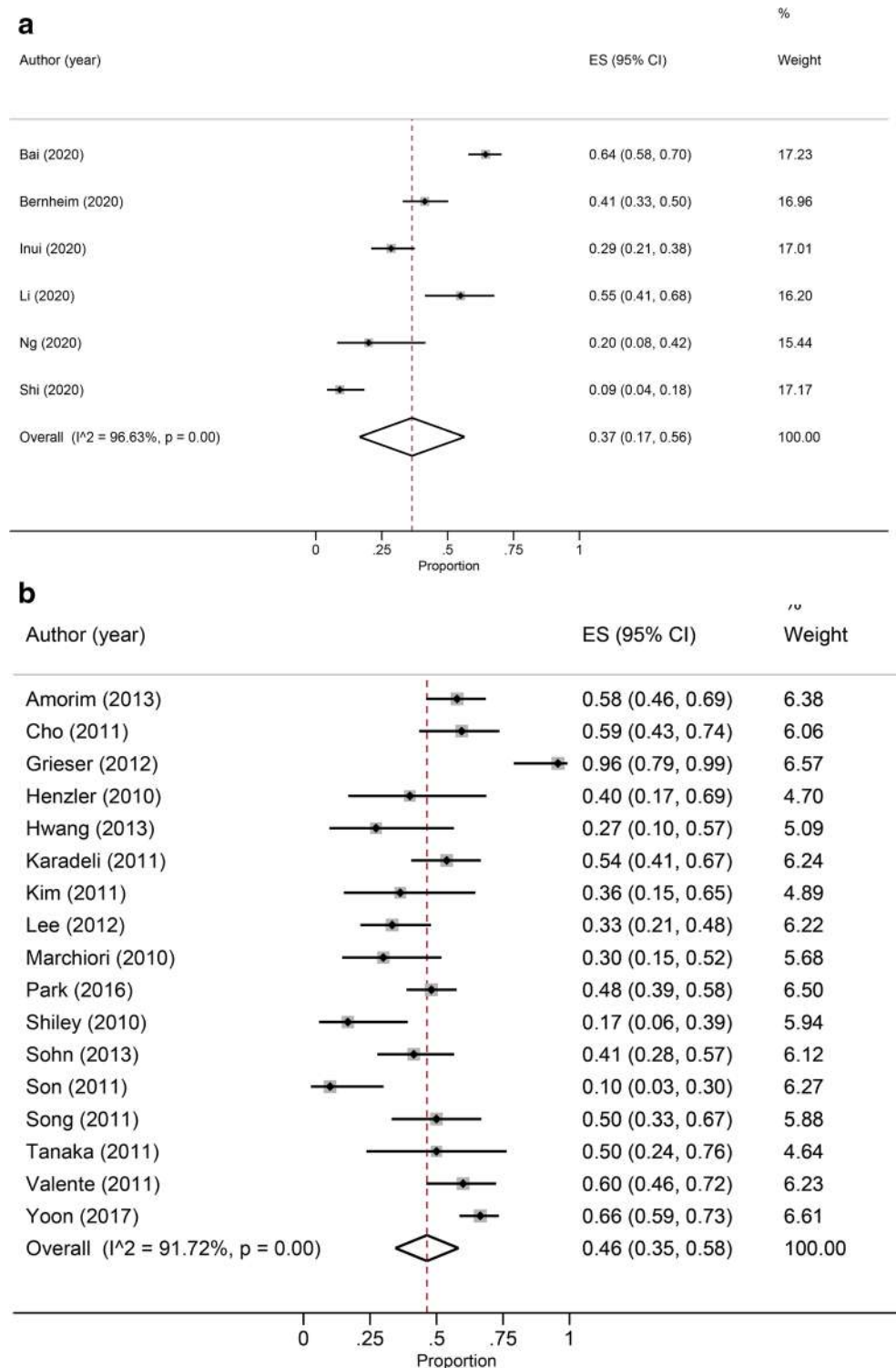
**Fig. 2** Forest plot of the pooled prevalence of “predominantly or purely ground-glass opacity” as the main CT pattern in COVID-19 (a) and non-COVID (b) studies. This was the most common predominant pattern in patients with COVID-19, and the second most prevalent pattern in non-COVID viral pneumonia. Heterogeneity was high and significant for both COVID-19 and non-COVID studies



and studies in which a percentage of the population did not have the diagnosis of COVID-19 confirmed by PCR, such as Ai et al [6]. We still had high heterogeneity between studies, which could be attributed to several factors. First, chest CT features, such as the predominant imaging pattern, depending on the time course of the infection when the patient is scanned [8, 14, 54]. A predominant pattern of GGOs is expected in the

early course of COVID-19, whereas a mixed pattern often peaks between the second and third week of infection [54]. To limit this temporal variation of findings, we only included cases of acute infection with up to 14 days of evolution. Another possible cause of inter-study heterogeneity was a non-standard description of the CT findings throughout the studies, which lead to a significant number of

**Fig. 3** Forest plot of the pooled prevalence of “mixed ground-glass opacity and consolidation” as the main CT pattern in COVID-19 (a) and non-COVID (b) studies. This was the most prevalent CT pattern in non-COVID viral pneumonia. Heterogeneity was high and significant for both groups



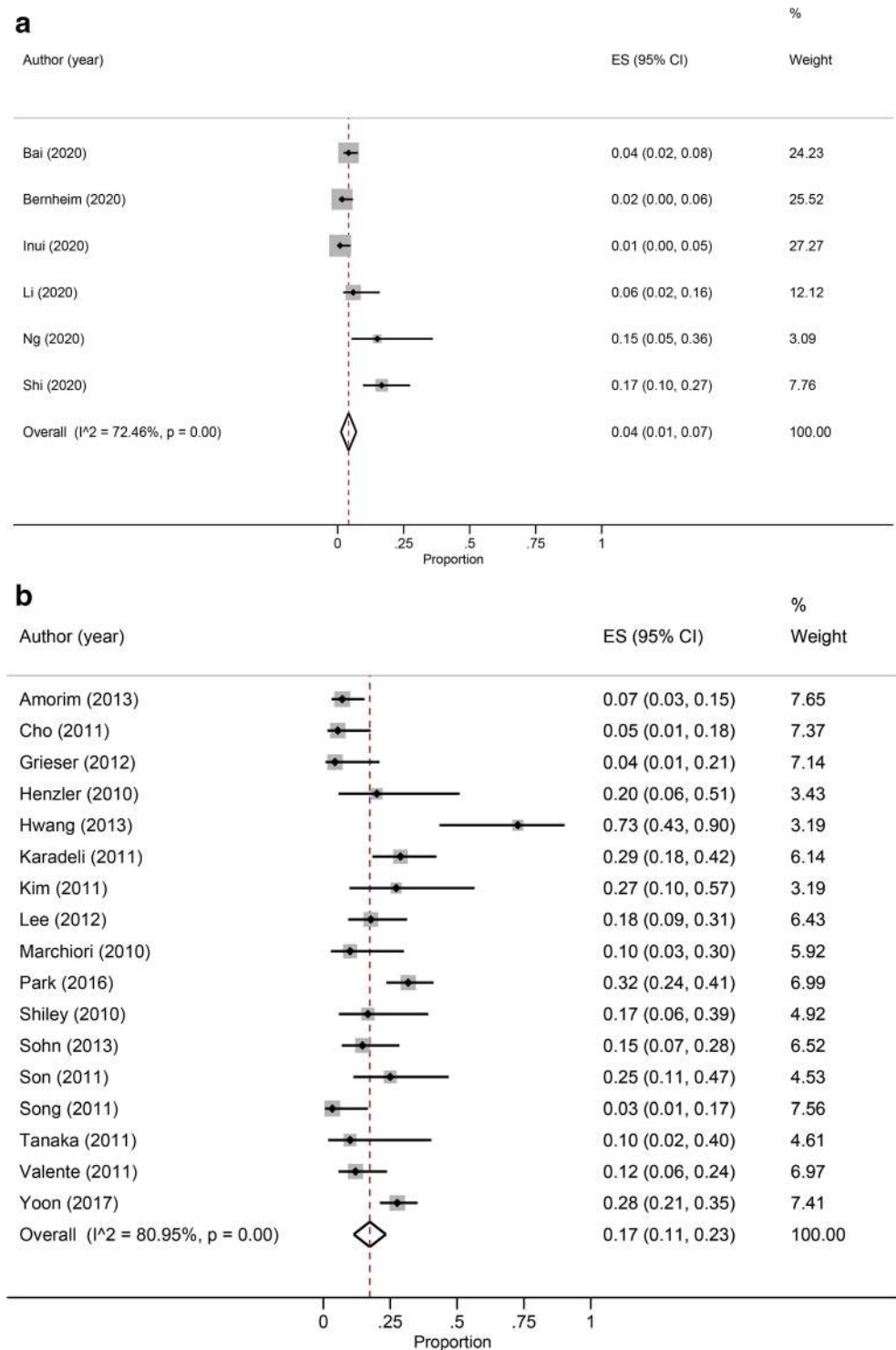
missing data. By including only immunocompetent patients, we tried to reduce such heterogeneity of CT findings. Differences in CT scanners and protocols can also be accounted for the high inter-study heterogeneity. Also, the higher prevalence of pleural effusion in non-COVID studies, especially in the studies by Henzler et al and Grieser

et al, could be attributed to pulmonary congestion of critically ill patients rather than a common manifestation of viral pneumonia [29, 32].

Several studies herein discussed have attempted to determine the diagnostic accuracy of chest CT to diagnose COVID-19. However, many are at risk of bias due to

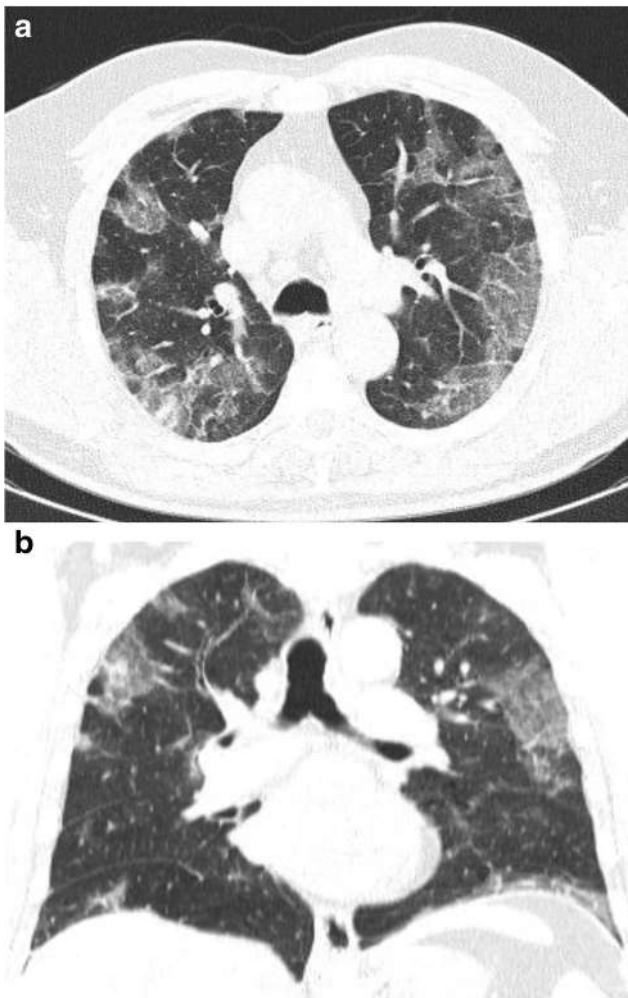


**Fig. 4** Forest plot of the pooled prevalence of “predominantly or purely consolidation” as the main CT pattern in COVID-19 (a) and non-COVID (b) studies. This was the least common CT pattern for both COVID-19 and non-COVID patients. Heterogeneity was high and significant for both COVID-19 and non-COVID studies



methodology limitations, such as lack of a control population and questionable reference tests. As a result, CT estimates of sensitivity and specificity could be flawed [55]. For instance, Ai et al reported a sensitivity of 97% and suggested chest CT as a primary tool for the detection of COVID-19 in epidemic areas [6]. Bai et al also found that CT was abnormal in more than 90% of RT-PCR

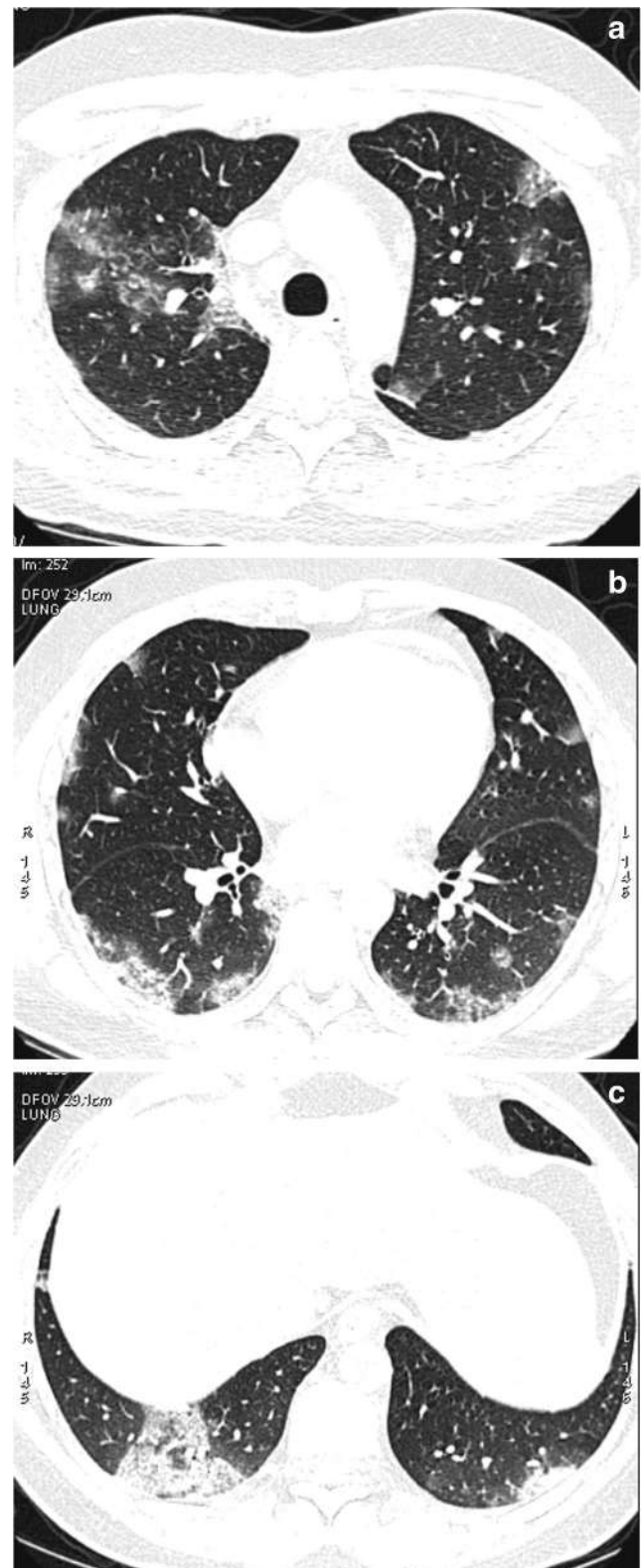
confirmed cases of COVID-19 [7]. On the other hand, Inui and colleagues described that only 61% of positive cases from Diamond Princess cruise ship had lung opacities on chest CT [10]. We believe the statistics of the latter comes closer to what would be expected in the general population, especially considering patients who are not very symptomatic and undergo chest CT scanning.



**Fig. 5** 60-year-old man presenting with typical CT findings of COVID-19 confirmed by RT-PCR. **a** Axial chest CT demonstrates bilateral subpleural ground-glass opacities with superimposed smooth interlobular septal thickening (crazy-paving). **b** Coronal reformatted CT shows bilateral upper to mid lung gradient, though the lower lobes were involved to a lesser extent

Bai et al investigated the performance of radiologists in differentiating COVID-19 from other viral pneumonia [7]. The authors found that American radiologists had a surprisingly high accuracy in distinguishing COVID-19 from other viral pneumonia. However, the reproducibility of these findings is questionable, as authors considered as references in the control group patients that had word “pneumonia” in their radiology CT reports and a positive result from respiratory pathogen panel. Also, bilateral GGOs have a much broader differential, present in atypical infections, non-infectious processes, and even in healthy individuals [40, 41]. Also, some patients with COVID-19 pneumonia may have a normal chest CT scan [50].

This study has some limitations. First, there were limitations common to any meta-analyses of diagnostic tests (e.g., selection bias, publication bias, missing information). Virtually all studies herein included had a retrospective



**Fig. 6** 31-year-old man with a diagnosis of H1N1. **a, b, c** Axial chest CT shows multiple subpleural ground-glass opacities and consolidations bilaterally

design, which is also a limitation. The exclusion of studies not available in English could have increased the probability of publication bias. Regarding selection bias, the etiological agents of non-COVID studies were not entirely comprehensible for all viruses associated with community-acquired viral pneumonia (e.g., rhinovirus). Few studies using chest CT in immunocompetent adults are available, as CT imaging is considered “usually not appropriate” by the ACR in this scenario [51]. Also, the heterogeneity in the results was high due to the reasons discussed above. Finally, the methodology for measuring variables (e.g., axial distribution, predominant CT pattern) was not standardized among manuscripts.

## Conclusion

Except for a higher prevalence of peripheral distribution, involvement of upper and middle lobes, COVID-19, and non-COVID viral pneumonia has overlapping chest CT findings. As such, caution should be exercised when interpreting chest CT for COVID-19 and the use of this imaging modality as a first-line test for COVID-19 diagnosis.

**Funding information** The authors state that this work has not received any funding.

## Compliance with ethical standards

**Guarantor** The scientific guarantor of this publication is Bruno Hochhegger, MD, PhD.

**Conflict of interest** The authors of this manuscript declare no relationships with any companies whose products or services may be related to the subject matter of the article.

**Statistics and biometry** One of the authors has significant statistical expertise.

**Informed consent** Not applicable since this was a systematic review and did not include information on human subjects.

**Ethical approval** Not applicable since this was a systematic review and did not include information on human subjects.

## Methodology

- Systematic review and meta-analysis

## References

- Zhu N, Zhang D, Wang W et al (2020) A novel coronavirus from patients with pneumonia in China, 2019. *N Engl J Med* 382:727–733
- Cao B, Wang Y, Wen D et al (2020) A trial of lopinavir–ritonavir in adults hospitalized with severe Covid-19. *N Engl J Med* 382:1787–1799
- World Health Organization. Coronavirus Disease (2019) Available via <https://www.who.int/emergencies/diseases/novel-coronavirus-2019>. Accessed 5 Apr 2020
- Huang C, Wang Y, Li X et al (2020) Clinical features of patients infected with 2019 novel coronavirus in Wuhan, China. *Lancet* 395:497–506
- Guan W, Ni Z, Hu Y et al (2020) Clinical characteristics of coronavirus disease 2019 in China. *N Engl J Med* 382:1708–1720
- Ai T, Yang Z, Hou H et al (2020) Correlation of chest CT and RT-PCR testing in coronavirus disease 2019 (COVID-19) in China: a report of 1014 cases. *Radiology*. <https://doi.org/10.1148/radiol.2020200642>
- Bai HX, Hsieh B, Xiong Z et al (2020) Performance of radiologists in differentiating COVID-19 from viral pneumonia on chest CT. *Radiology*. <https://doi.org/10.1148/radiol.2020200823>
- Bernheim A, Mei X, Huang M et al (2020) Chest CT findings in coronavirus disease-19 (COVID-19): relationship to duration of infection. *Radiology*. <https://doi.org/10.1148/radiol.2020200463>
- Caruso D, Zerunian M, Polici M et al (2020) Chest CT features of COVID-19 in Rome, Italy. *Radiology*. <https://doi.org/10.1148/radiol.2020201237>
- Inui S, Fujikawa A, Jitsu M et al (2020) Chest CT findings in cases from the cruise ship “Diamond Princess” with coronavirus disease 2019 (COVID-19). *Radiology: Cardiothoracic Imaging*. <https://doi.org/10.1148/ryct.2020200110>
- Li Y, Xia L (2020) Coronavirus disease 2019 (COVID-19): role of chest CT in diagnosis and management. *AJR Am J Roentgenol* 4: 1–7
- Liu K-C, Xu P, Lv W-F et al (2020) CT manifestations of coronavirus disease-2019: a retrospective analysis of 73 cases by disease severity. *Eur J Radiol*. <https://doi.org/10.1016/j.ejrad.2020.108941>
- Ng M-Y, Lee EY, Yang J et al (2020) Imaging profile of the COVID-19 infection: radiologic findings and literature review. *Radiology: Cardiothoracic Imaging*. <https://doi.org/10.1148/ryct.2020200034>
- Pan Y, Guan H, Zhou S et al (2020) Initial CT findings and temporal changes in patients with the novel coronavirus pneumonia (2019-nCoV): a study of 63 patients in Wuhan, China. *Eur Radiol*. <https://doi.org/10.1007/s00330-020-06731-x>
- Song F, Shi N, Shan F et al (2020) Emerging 2019 novel coronavirus (2019-nCoV) pneumonia. *Radiology* 295:210–217
- Shi H, Han X, Jiang N et al (2020) Radiological findings from 81 patients with COVID-19 pneumonia in Wuhan, China: a descriptive study. *Lancet Infect Dis* 20:425–434
- Amorim VB, Rodrigues RS, Barreto MM, Zanetti G, Hochhegger B, Marchiori E (2013) Influenza A (H1N1) pneumonia: HRCT findings. *J Bras Pneumol* 39:323–329
- Cho WH, Kim YS, Jeon DS et al (2011) Outcome of pandemic H1N1 pneumonia: clinical and radiological findings for severity assessment. *Korean J Intern Med* 26:160
- Li P, Su DJ, Zhang JF, Xia XD, Sui H, Zhao DH (2011) Pneumonia in novel swine-origin influenza A (H1N1) virus infection: high-resolution CT findings. *Eur J Radiol* 80:146–152
- Li H, Weng H, Lan C et al (2018) Comparison of patients with avian influenza A (H7N9) and influenza A (H1N1) complicated by acute respiratory distress syndrome. *Medicine (Baltimore)* 97: e0194
- Marchiori E, Zanetti G, Hochhegger B et al (2010) High-resolution computed tomography findings from adult patients with influenza A (H1N1) virus-associated pneumonia. *Eur J Radiol* 74:93–98
- Nicolini A, Ferrera L, Rao F, Senarega R, Ferrari-Bravo M (2012) Chest radiological findings of influenza A H1N1 pneumonia. *Rev Port Pneumol* 18:120–127
- Park CK, Kwon H, Park JY (2017) Thin-section computed tomography findings in 104 immunocompetent patients with adenovirus pneumonia. *Acta Radiol* 58:937–943



24. Qi W, Gao S, Liu C, Shinong P, Guo Q (2014) Computed tomographic features of pregnant women with pandemic H1N1 virus infection. *Radiol Infect Dis* 1:23–27
25. Shiley KT, Van Deerlin VM, Miller WT (2010) Chest CT features of community-acquired respiratory viral infections in adult inpatients with lower respiratory tract infections. *J Thorac Imaging* 25: 68–75
26. Sohn CH, Ryoo SM, Yoon JY et al (2013) Comparison of clinical features and outcomes of hospitalized adult patients with novel influenza A (H1N1) pneumonia and other pneumonia. *Acad Emerg Med* 20:46–53
27. Son JS, Kim YH, Lee YK et al (2011) Pandemic influenza A/H1N1 viral pneumonia without co-infection in Korea: Chest CT findings. *Tuberc Respir Dis* 70:397–404
28. Song JY, Cheong HJ, Heo JY et al (2011) Clinical, laboratory and radiologic characteristics of 2009 pandemic influenza A/H1N1 pneumonia: primary influenza pneumonia versus concomitant/secondary bacterial pneumonia. *Influenza Other Respi Viruses* 5: 535–543
29. Grieser C, Goldmann A, Steffen IG et al (2012) Computed tomography findings from patients with ARDS due to influenza A (H1N1) virus-associated pneumonia. *Eur J Radiol* 81:389–394
30. Tanaka N, Emoto T, Suda H et al (2012) High-resolution computed tomography findings of influenza virus pneumonia: a comparative study between seasonal and novel (H1N1) influenza virus pneumonia. *Jpn J Radiol* 30:154–161
31. Valente T, Lassandro F, Marino M, Squillante F, Aliperta M, Muto R (2012) Polmonite H1N1: La nostra esperienza in 50 pazienti con decorso clinico grave dell'influenza virale A di origine suina (S-OIV). *Radiol Med* 117:165–184
32. Henzler T, Meyer M, Kalenka A et al (2010) Image findings of patients with H1N1 virus pneumonia and acute respiratory failure. *Acad Radiol* 17:681–685
33. Hwang SM, Park DE, Yang YI et al (2013) Outbreak of febrile respiratory illness caused by adenovirus at a south Korean military training facility: clinical and radiological characteristics of adenovirus pneumonia. *Jpn J Infect Dis* 66:359–365
34. Kang H, Lee KS, Jeong YJ, Lee HY, Kim KI, Nam KJ (2012) Computed tomography findings of influenza a (H1N1) pneumonia in adults: pattern analysis and prognostic comparisons. *J Comput Assist Tomogr* 36:285–290
35. Karadeli E, Koç Z, Uluşan Ş, Erbay G, Demiroğlu YZ, Şen N (2011) Chest radiography and CT findings in patients with the 2009 pandemic (H1N1) influenza. *Diagn Interv Radiol* 17:216–222
36. Kim SY, Kim JS, Park CS (2011) Various computed tomography findings of 2009 H1N1 influenza in 17 patients with relatively mild illness. *Jpn J Radiol* 29:301–306
37. Ishiguro T, Takayanagi N, Kanauchi T et al (2016) Clinical and radiographic comparison of influenza virus-associated pneumonia among three viral subtypes. *Intern Med* 55:731–737
38. Lee JE, Choe KW, Lee SW (2013) Clinical and radiological characteristics of 2009 H1N1 influenza associated pneumonia in young male adults. *Yonsei Med J* 54:927–934
39. Yoon H, Jhun BW, Kim H, Yoo H, Park SB (2017) Characteristics of adenovirus pneumonia in Korean military personnel, 2012–2016. *J Korean Med Sci* 32:287–295
40. Winter DH, Manzini M, Salge JM et al (2015) Aging of the lungs in asymptomatic lifelong nonsmokers: findings on HRCT. *Lung* 193: 283–290
41. Copley SJ, Wells AU, Hawtin KE et al (2009) Lung morphology in the elderly: comparative CT study of subjects over 75 years old versus those under 55 years old. *Radiology* 251:566–573
42. Jain S, Self WH, Wunderink RG et al (2015) Community-acquired pneumonia requiring hospitalization among U.S. adults. *N Engl J Med* 373:415–427
43. Jennings LC, Anderson TP, Beynon KA et al (2008) Incidence and characteristics of viral community-acquired pneumonia in adults. *Thorax* 63:42–48
44. de Roux A, Marcos MA, Garcia E et al (2004) Viral community-acquired pneumonia in nonimmunocompromised adults. *Chest* 125:1343–1351
45. Oosterheert JJ, van Loon AM, Schuurman R et al (2005) Impact of rapid detection of viral and atypical bacterial pathogens by real-time polymerase chain reaction for patients with lower respiratory tract infection. *Clin Infect Dis* 41:1438–1444
46. Hansell DM, Bankier AA, MacMahon H, McLoud TC, Müller NL, Remy J (2008) Fleischner Society: glossary of terms for thoracic imaging. *Radiology* 246:697–722
47. National Heart, Lung, and Blood Institute website. Study quality assessment tools. Available at [www.nhlbi.nih.gov/health-topics/study-quality-assessment-tools](http://www.nhlbi.nih.gov/health-topics/study-quality-assessment-tools). Accessed 1 April 2020
48. Rubin GD, Ryerson CJ, Haramati LB et al (2020) The role of chest imaging in patient management during the COVID-19 pandemic: a multinational consensus statement from the Fleischner Society. *Radiology*. <https://doi.org/10.1148/radiol.2020201365>
49. Kooraki S, Hosseiny M, Myers L, Gholamrezaezhad A (2020) Coronavirus (COVID-19) outbreak: what the department of radiology should know. *J Am Coll Radiol* 17:447–451
50. Simpson S, Kay FU, Abbara S et al (2020) Radiological Society of North America Expert Consensus Statement on Reporting Chest CT Findings Related to COVID-19. Endorsed by the Society of Thoracic Radiology, the American College of Radiology, and RSNA. *Radiology: Cardiothoracic Imaging*. <https://doi.org/10.1097/RTL.0000000000000524>
51. American College of Radiology. ACR recommendations for the use of chest radiography and computed tomography (CT) for suspected COVID-19. Available at <https://www.acr.org/Advocacy-and-Economics/ACR-Position-Statements/Recommendations-for-Chest-Radiography-and-CT-for-Suspected-COVID19-Infection>. Accessed 4 Apr 2020
52. Bao C, Liu X, Zhang H, Li Y, Liu J (2020) Coronavirus disease 2019 (COVID-19) CT findings: a systematic review and metaanalysis. *J Am Coll Radiol*. <https://doi.org/10.1016/j.jacr.2020.03.006>
53. Salehi S, Abedi A, Balakrishnan S, Gholamrezaezhad A (2020) Coronavirus disease 2019 (COVID-19): a systematic review of imaging findings in 919 patients. *AJR Am J Roentgenol* 14:1–7
54. Wang Y, Dong C, Hu Y et al (2020) Temporal changes of CT findings in 90 patients with COVID-19 pneumonia: a longitudinal study. *Radiology*. <https://doi.org/10.1148/radiol.2020200843>
55. Cohen JF, Korevaar DA, Altman DG et al (2016) STARD 2015 guidelines for reporting diagnostic accuracy studies: explanation and elaboration. *BMJ Open* 6:e012799

**Publisher's note** Springer Nature remains neutral with regard to jurisdictional claims in published maps and institutional affiliations.