

Original Article

Cite this article: Condini MV, Pereyra PER, Garcia AM, Saint'pierre TD, Ceni G, Lugo R, Fontoura NF, Vieira JP, Albuquerque CQ (2019). Use of fresh water by an estuarine-resident marine catfish: evidence from gonadal and otolith chemistry analyses. *Journal of the Marine Biological Association of the United Kingdom* **99**, 1667–1674. <https://doi.org/10.1017/S0025315419000493>

Received: 19 February 2019

Revised: 22 April 2019

Accepted: 10 May 2019

First published online: 20 June 2019

Key words:

Ariidae; estuarine and freshwater guild; natural tags; Patos Lagoon; reproduction

Author for correspondence:

Mario V. Condini,

E-mail: mvcondini@gmail.com

Use of fresh water by an estuarine-resident marine catfish: evidence from gonadal and otolith chemistry analyses

Mario V. Condini^{1,2}, Paula E. R. Pereyra^{2,3}, Alexandre M. Garcia²,
Tatiana D. Saint'pierre⁴, Gianfranco Ceni⁵, Rafael Lugo⁵, Nelson F. Fontoura⁵,
João P. Vieira² and Cristiano Q. Albuquerque¹

¹Centro de Ciências Biológicas e da Saúde, Universidade Federal Rural do Semi-Árido, Av. Presidente Costa e Silva, 59625-900, Mossoró, Brasil; ²Instituto de Oceanografia, Universidade Federal do Rio Grande, Av. Itália km 08, Carreiros, 96203-900, Rio Grande, Brasil; ³Instituto de Biotecnologia, Universidade Federal do Rio Grande do Sul, Av. Bento Gonçalves 9500, Campus do Vale, Bairro Agronomia, 91501-970, Porto Alegre, Brasil; ⁴Departamento de Química, Pontifícia Universidade Católica do Rio de Janeiro, Rua Marquês de São Vicente, 225, Gávea, 22451-900, Rio de Janeiro, Brasil and ⁵Instituto de Meio Ambiente, Pontifícia Universidade Católica do Rio Grande do Sul, Av. Ipiranga 6681, 90619-900, Porto Alegre, Brasil

Abstract

In this study, we examine how the Guri catfish *Genidens genidens* uses estuarine and fresh-water habitats along the largest South American coastal lagoon, through the chemical analysis of otoliths and microscopic analysis of gonads. Chemical composition (Sr:Ca) of otolith edges allowed distinguishing between individuals who used the estuarine or fresh-water compartments of the lagoon. The analysis of core-to-edge chemical profiles of each individual otolith revealed that the population may present two different patterns of habitat use along the lagoon. The 'type 1' pattern (89.5%) includes fish who appear to have been born in estuarine waters, whereas 'type 2' (9.5%) includes those fish born in fresh water. Nevertheless, juveniles from both patterns appear to migrate to estuarine waters. The gonad analysis shows *G. genidens* may reproduce in fresh water, as nearly 57% of all sampled fish were found to spawn in the freshwater portion of the lagoon. Also, the otolith core of many adult fish presented freshwater signatures, thus suggesting consistent fresh water use during early life. Our findings based on otolith and gonadal analyses challenge the previous classification of *G. genidens* as an estuarine resident. Rather, our results allow the suggestion that this species should be placed in the 'estuarine and fresh water' guild, which includes both fish completing their life cycles within the estuary and fish who consistently use freshwater habitats.

Introduction

Catfishes comprise diverse marine, estuarine and freshwater species, with varied habitat use and migratory patterns worldwide (Figueiredo & Menezes, 1978; Nelson, 2006). Some of them migrate for thousands of kilometres, for example the large Amazonian catfish, *Brachyplatystoma rousseauxii* (Duponchelle *et al.*, 2016) and others migrate for hundreds of kilometres, for example the marine catfish, *Genidens barbatus*, in southern Brazil (Milani & Fontoura, 2007; Fontoura *et al.*, 2019). The Ariidae family inhabits numerous coastal and fluvial systems in tropical and subtropical regions (Barletta & Blaber, 2007). As they tolerate strong salinity variations (Dantas *et al.*, 2010) and present complex patterns of habitat use (Duponchelle *et al.*, 2016; Avigliano *et al.*, 2017), each population needs specific studies to have their nursery and breeding areas understood, to provide crucial information for their conservation (Chittaro *et al.*, 2009; Hegg *et al.*, 2015).

The Guri sea catfish *Genidens genidens* (Cuvier, 1829) occurs along the east coast of South America from north-eastern Brazil to northern Argentina (Marceniuk & Menezes, 2007), especially in estuaries and coastal lagoons. It may also be sporadically found in low numbers along marine regions adjacent to coastal lagoon systems (Araújo, 1988, 1996; Denadai *et al.*, 2012). As usually reported for other marine catfishes, the male incubates eggs and larvae in its mouth (Chaves, 1994; Garcia *et al.*, 2006) during a period of 2–3 months (Barbieri *et al.*, 1992). This parental care usually takes place in estuaries, which represents their main breeding areas throughout their geographic distribution (Gomes *et al.*, 1999; Rocha & Freire, 2009). Previous studies based on size-structure data have included *G. genidens* in the 'estuarine resident' guild (Garcia *et al.*, 2001; Gomes & Araújo, 2004; Schmidt *et al.*, 2008; Vieira *et al.*, 2010; Denadai *et al.*, 2012). A recent study, however, reported that artisanal fisheries usually capture marine catfishes (up to 10% of total landings) in the northern-freshwater portion of the Patos Lagoon, Brazil, and that *G. genidens* is one of the usually landed species (Ceni *et al.*, 2016). These observations motivated us to hypothesize that *G. genidens* may consistently use the full freshwater reaches of the lagoon and may even reproduce in this area far away from the estuarine/freshwater boundary.



Patos Lagoon is the largest coastal lagoon in South America (10,360 km²) and *G. genidens* is a frequent and abundant species in its estuarine area (Chao *et al.*, 1985; Vieira *et al.*, 2010), being rare along the adjacent marine coast (Rodrigues *et al.*, 2015). Araújo (1988) showed that *G. genidens* occurs from the higher salinity conditions in the estuarine mouth (lower estuary) to the lower salinity conditions upstream (upper estuary), with higher abundances observed towards lower salinities. Reproduction occurs within the lagoon, in the boundary between estuarine and fresh water, and juveniles have been reported to live in the estuarine region (Araújo, 1988). Although *G. genidens* has been observed in the upstream freshwater reaches of the lagoon hundreds of kilometres away from its connection with the sea (Fontoura *et al.*, 2019), no reproduction has ever been registered in full freshwater conditions.

Diverse ecological tools may help to examine the way *G. genidens* uses freshwater habitats. For example, the chemical analysis of otoliths has been successfully applied to evaluate displacement patterns in migratory fishes (Thorrold *et al.*, 2001; Wells *et al.*, 2012; Aschenbrenner *et al.*, 2016) and to distinguish fish stocks (Campana *et al.*, 2000; Tabouret *et al.*, 2010; Fortunato *et al.*, 2017). This technique allows reconstruction of the chemical conditions experienced by migratory teleost fishes during their development (Campana, 1999; Elsdon *et al.*, 2008; Avigliano & Volpedo, 2016) and has been increasingly used over the past 20 years (Secor *et al.*, 1995; Patterson *et al.*, 2005; Albuquerque *et al.*, 2010; Arai *et al.*, 2019). Strontium (Sr) and barium (Ba) concentrations in otoliths usually correlate positively and negatively with salinity, respectively (Elsdon & Gillanders, 2002; Elsdon *et al.*, 2008; Jessop *et al.*, 2013). Therefore, fish inhabiting marine habitats tend to present higher otolith concentrations of strontium and lower barium compared with freshwater fish. Another useful analytical tool to understand species' habitat use is the microscopic analysis of their gonads, which can reveal if reproduction occurs in a given habitat (e.g. Condini *et al.*, 2014a). For example, the presence of atretic oocytes, with distended ovarian membrane and disruption of reproductive tissues suggest recent spawning, thus indicating reproduction areas (McMillan, 2007; Jakobsen *et al.*, 2009). Thus, associating otolith microchemistry and microscopic analysis of gonads may significantly improve our understanding of the way *G. genidens* uses estuarine and freshwater habitats.

In this study, we associated otolith microchemistry and gonadal analyses to evaluate nursery origins (estuary vs fresh water) and freshwater use by *G. genidens* inside Patos Lagoon, the largest coastal lagoon in South America. We hypothesize that some *G. genidens* individuals consistently use fresh water and may even reproduce in the northern freshwater portion of the lagoon, fairly distant (~180 km) from the estuarine boundary.

Materials and methods

Study area and sampling

The Patos Lagoon (PL) is located on the coastal plain of southern Brazil (Figure 1). It constitutes the largest lagoon in South America (Kjerfve, 1986) with a total area of 10,360 km² and presents an estuarine portion of ~1000 km² (Seeliger, 2001). Freshwater environments represent about 80% of the PL area year-round (Seeliger, 2001). The PL receives fresh water from rivers located in the northern reaches of the coastal plain of Rio Grande do Sul state and from the Mirim Lagoon, which together comprise a drainage basin of ~14,000 km² (Möller & Fernandes, 2010; Fontoura *et al.*, 2016). The PL connects to the ocean through a 1.5–0.5 km wide channel fixed by two 5 km long rocky jetties (Seeliger *et al.*, 1997).

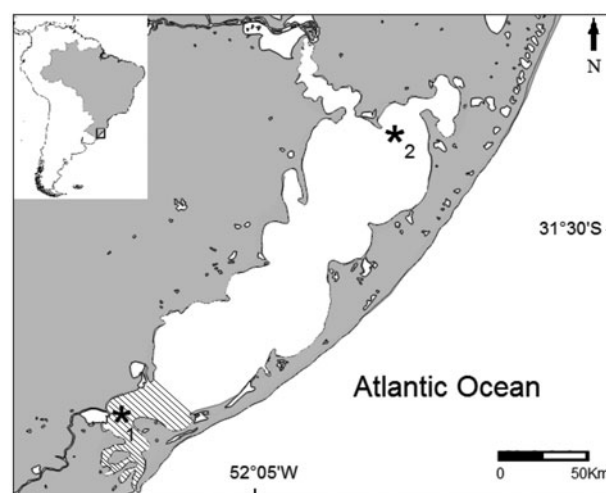


Fig. 1. Patos Lagoon (10,360 km²) in the state of Rio Grande do Sul, southern Brazil, showing the two sampling areas (asterisks): (1) the estuarine region (hatched area) and (2) the freshwater region at the northern reaches of the lagoon (2).

A total of 137 individuals were collected in the PL from 2012 to 2013. From these, 48 fish (19 from fresh water and 29 from estuarine water) were analysed for otolith chemistry and 89 (from fresh water) were analysed for gonadal development. Estuarine fish were sampled with bottom trawls close to Rio Grande city (Figure 1, site 1). Freshwater fish were sampled through multi-mesh gillnets at the north portion of the Patos Lagoon, about 180 km from the estuary (Figure 1, site 2). Biometric data, such as total length (TL, mm) and total weight (TW, g) were measured for all individuals in the laboratory.

To characterize mean salinities along the sampling area we used data from two different datasets. The first dataset included estuarine salinities obtained monthly from 2012 to 2014 by the Brazilian Long Term Ecological Research (B-LTER) project developed in Rio Grande city (Figure 1, site 1). The second dataset included the freshwater region of Patos Lagoon (Figure 1, site 2), where salinities were obtained also monthly from 2012 to 2014 by researchers from the PUC-RS University.

Preparation of samples for otolith microchemistry analysis

A sub-sample of 48 individuals (29 from estuarine and 19 from fresh water) sampled from January 2012 to February 2013 had their otolith chemically analysed. The pair of otoliths *lapillus* was chosen for chemical analysis because they are the most developed in Arid catfishes (Acero & Betancur, 2007). After extraction, otoliths were cleaned, dried, embedded in crystal polyester resin and sectioned in 0.3 mm thick sections using a metallographic saw (Buehler, Lake Bluff, IL). The sections were fixed in a histological slide with quick drying glue and were polished, washed with Milli-Q water, rinsed with deionized water and stored in a laminar flow cabinet prior to the chemical analysis.

Each otolith was chemically analysed along a transect between its core and edge using a Nd-YAG laser ablation system (CETAC, LSX 100) operating at 266 nm wavelength and output power of 0.3 to 0.4 mJ per pulse. This system was coupled to an LA-ICPMS (Perkin Elmer NEX-Ion) operating with a power of 1200 watts and using Argon as carrying gas. The abundances of calcium (⁴³Ca), strontium (⁸⁶Sr) and barium (¹³⁸Ba) were analysed. Blank ablations (background intensities) were measured during 50 s after every 10 otolith ablations. Strontium and calcium counts per second (cps) were subtracted from the background level, and element:Ca ratios were then calculated for all otoliths. Before the analysis, the instrument was optimized by

daily performance using the maximum intensities to analysis and with minimum interference through the use of oxides and double charged ions. The accuracy of the analysis was evaluated by estimating the relative standard deviation of 10 standard consecutive measurements NIST 1834, resulting in relative standard deviations (RSD) of 3.99, 6.91 and 12.43% for ^{43}Ca , ^{86}Sr and ^{138}Ba , respectively.

Determination of gonadal development

A sub-sample of 89 individuals obtained from January 2012 to May 2013 at the freshwater site had their gonads analysed to evaluate whether reproduction may occur in the freshwater portion of Patos lagoon, about 180 km far from the estuary. Given that estuarine spawning and reproduction were already well documented (Barbieri *et al.*, 1992), we did not analyse gonads from estuarine-sampled fish. In the laboratory, fish were dissected with a ventral incision to extract their gonads, which were fixed in 10% formalin. Gonads were processed manually, dehydrated in a series of increasing alcohol concentrations, and embedded in paraffin, then sectioned in slices of 7 μm thickness with the aid of a rotational microtome and, subsequently, fixed in histological slides. Each section was stained with haematoxylin-eosin (HE). Stages of gonadal development were determined both by macroscopic inspection and microscopic identification using transmitted light under a dissecting microscope at 15–30 \times magnification, following the maturation scale used by Brown-Peterson *et al.* (2011). Gonadosomatic index (GSI) of *G. genidens* was determined following the equation: $\text{GSI} = (\text{GoW}/\text{TW} - \text{GoW}) \times 100$, where TW is the fish total weight (g) and GoW is the weight of the gonad (g).

Data analysis

Fish age was inferred from the analysis of growth increments in otoliths. All procedures for otolith processing followed Condini *et al.* (2014b). The periodicity of increment formation in otoliths was not validated for *G. genidens* in a subtropical region. Validation studies for other species (*Micropogonia furnieri*, *Mugil liza*, *Epinephelus marginatus*), including the congeneric species *G. barbatus* have shown that the formation of one increment per year seems to be the rule along the Patos Lagoon (Reis, 1986; Schwingel & Castello, 1990; Garbin *et al.*, 2014; Condini *et al.*, 2014b). Therefore, we assume growth increments form annually for *G. genidens*. Differences on mean water salinities between estuary and fresh water were evaluated through one-way Kruskal–Wallis test, given that our data followed a non-parametric distribution.

Mean Sr:Ca and Ba:Ca ratios in otolith core and edge were compared between estuary and fresh water using a one-way non-parametric Kruskal–Wallis test, as data were also non-parametric. The otolith edge was defined as the $\sim 30\ \mu\text{m}$ nearest to the edge of the otolith, whereas the core region was defined as the first 60 μm away from the centre of the otolith nucleus. Given that fish size may affect otolith elemental composition in some species (Campana, 2001; Albuquerque *et al.*, 2010; Condini *et al.*, 2016), we repeated the non-parametric Kruskal–Wallis test on a subset of 15 fish (7 from the estuary and 8 from freshwater lagoon) with similar size (290–340 mm). Finally, we assessed life-long conditions experienced by each fish from Sr:Ca and Ba:Ca ratios measured along core-to-edge otolith profiles. These core-to-edge chemical profiles were used as proxies for inferring habitat use along the freshwater and estuarine regions in the study area. The chemical threshold between freshwater and estuarine habitats was defined as the mean Sr:Ca ratio measured in the edge of freshwater otoliths, plus one standard deviation (as suggested by Mohan *et al.*, 2015 and Fuji *et al.*,

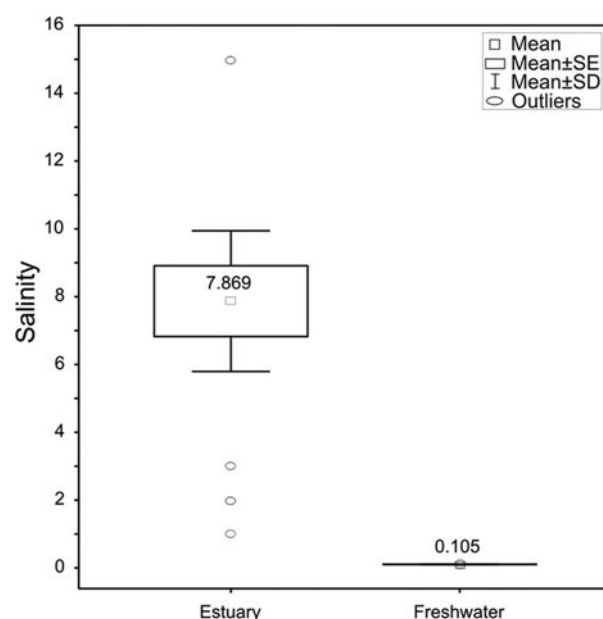


Fig. 2. Average salinity values (\pm SD) in the estuarine and freshwater sites of Patos Lagoon where fish were sampled.

2016). Therefore, Sr:Ca ratios in otoliths over this threshold were interpreted as estuarine use during a given amount of time.

Results

Out of the 48 individuals of *G. genidens* collected for otolith microchemistry, total length (TL) of estuarine fish ranged from 58–345 mm (0+ to 15 years), whereas the freshwater fish ranged from 293–465 mm TL (5 to 24 years). As expected, according to the historical salinity datasets, mean salinity in the estuary (7.87 ± 9.56) was significantly higher than in fresh water (0.11 ± 0.04) (KW-H(1, 149) = 17.9857; $P < 0.001$) (Figure 2). During the fish samplings (2012–2013), salinity ranged from 2–7 in the estuary and remained always below 0.2 in the freshwater portion of the Patos Lagoon, at about 180 km from the estuarine region.

Elemental ratios in the otolith cores (which represent early life) were similar between estuarine and freshwater fish (KW-H(1, 469) = 1.5392, $P > 0.05$ for Sr:Ca, and KW-H(1, 469) = 4.2880, $P > 0.05$ for Ba:Ca; Figure 3A, B). In contrast, the edge compositions (which represent recent deposition) were significantly different between sampling areas, following the salinity gradient along the Patos Lagoon. Mean Sr:Ca ratios in otolith edges (Figure 3C) were significantly higher in fish sampled in estuarine waters (0.68 ± 0.13) than those caught in fresh water (0.33 ± 0.09) (KW-H(1, 224) = 136.8922; $P < 0.001$). An opposite pattern was observed for Ba:Ca ratios in the otolith edges (Figure 3D), which were higher in those fish caught in freshwater (0.12 ± 0.03) than in those from the estuary (0.08 ± 0.04 , $P < 0.001$) (KW-H(1, 224) = 32.2094; $P < 0.001$). The same pattern was observed in the subset of otoliths from fish with similar sizes (Figure 3E, F).

Strontium signatures in otolith edges differed significantly and did not overlap between estuarine and fresh water (Figure 3C). Barium signatures, instead, overlapped between estuarine and fresh water, despite their mean values differing statistically (Figure 3D). As this chemical overlapping may confound our ability to interpret fish movements from otolith composition, we discarded Ba:Ca ratios and opted to use Sr:Ca = 0.44 as the threshold between fresh and estuarine water.

The analysis of Sr:Ca life-time profiles in otoliths of adult fish revealed that the Guri sea catfish may present at least two clearly distinct patterns of habitat use between estuarine and fresh water

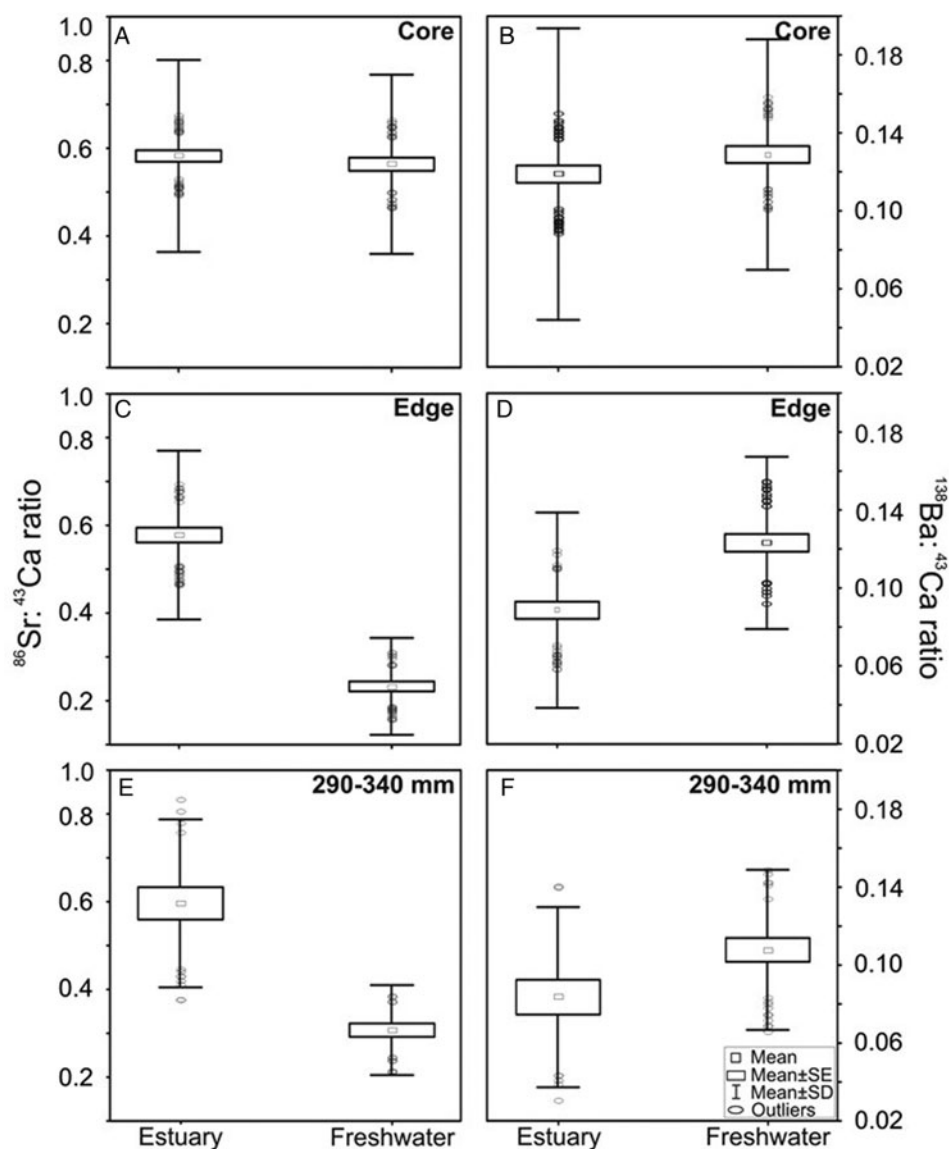


Fig. 3. Mean values (\pm SD) of the concentrations of Sr:Ca (left) and Ba:Ca (right) ratios at the core (panels A, B) and the edge (panels C, D) sections of the otoliths of individuals of *Genidens genidens* caught in the estuarine and freshwater sites of Patos Lagoon. Average values (\pm SD) of the concentrations of Sr:Ca (left) and Ba:Ca (right) ratios from the edge of the otoliths of individuals of *G. genidens* from similar size classes (between 290 and 340 mm TL) (panels E, F).

along Patos Lagoon (Figure 4). The habitat use pattern here named 'type 1' (found in 89.5% of the sampled individuals, Figure 4A) includes fish with Sr:Ca ratios in the otolith core above the fresh water threshold (0.44) suggesting they were born and had early development in the estuarine area. Some of them appear to have migrated to fresh water after early life (see Sr:Ca ratio profiles of individuals presented in the supplementary Figure, e.g. M, Q, EE). The second pattern, named 'type 2' (9.5%, Figure 4B), includes fish whose otolith cores presented Sr:Ca ratios below the fresh water threshold, thus suggesting fresh water origin. All fish under this classification appear to migrate towards the estuary during early life, sometimes migrating back to fresh water later in life (e.g. see samples KK to SS in the supplementary Figure). Regardless of sampling site, otolith composition suggests all fish experienced estuarine or mixohaline waters during at least part of their juvenile life (Figure S1).

Out of the 89 specimens collected in the freshwater region of the lagoon, 53 were females with sizes (TL) ranging between 272 and 450 mm and 36 were males with sizes between 123 and 435 mm (Table 1). Microscopy analysis of gonads revealed that sampled females were developing ($N = 14$) or spawning capable ($N = 15$), with stages of oocytes development clearly discernible. The advanced maturation was characterized by the predominance of ovarian follicles with yolk granules associated with previtellogenic follicles and distinct stages of development, such as

reserve stock oocytes, oocytes with full vitellogenesis and nest of young germinative cells (Figure 5A). Based on microscopy identification of gonads and GSI analysis, we distinguished developing (mean GSI = 2.5, ranging from 0.9–3.8, Table 1) from spawning capable (GSI = 4.9, ranging from 4.0–6.5) females. Also, 24 females presented atretic oocytes, regressing phase (GSI = 0.6, ranging from 0.3–1.2) (Figure 5B), with distended membranes and disruption of reproductive tissue, thus indicating recent spawning and supporting the second pattern of habitat use (Type 2). Microscopic analysis of male gonads revealed 22 fish (Table 1) with a massive presence of seminiferous tubules filled with sperm (Figure 5C), thereby indicating sexual maturity and spawning capability. We also found 14 regressing males with empty testes presenting cell breakdown and the presence of lumen (Figure 5D), thus indicating recent spawning.

Discussion

Our findings revealed that *G. genidens* individuals may present different patterns of habitat use along estuarine and fresh water reaches of the largest coastal lagoon in South America. Moreover, the combination of otolith microchemistry and gonadal analysis supports our initial hypothesis that some individuals of *G. genidens* may spawn in fresh water, which challenges its previous classification as an estuarine resident (Mishima &

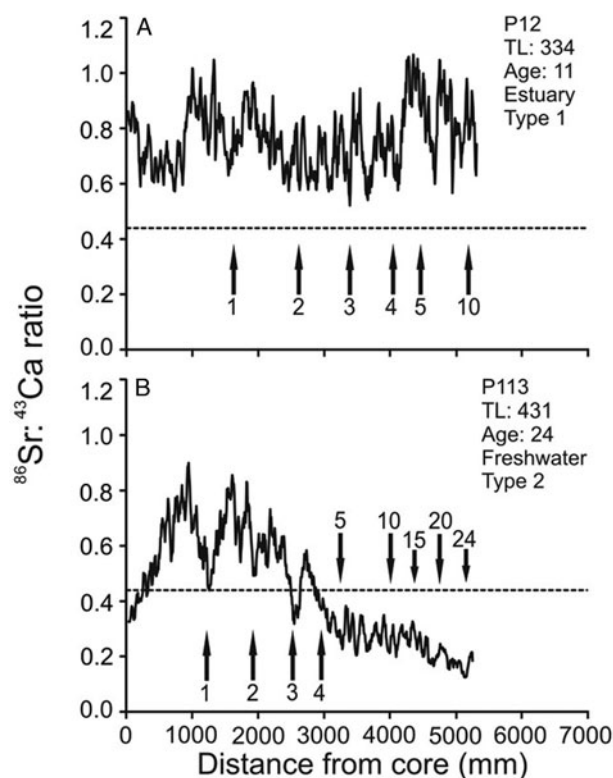


Fig. 4. Core-to-edge profiles of Sr:Ca ratios (black line) in otoliths of catfish *Genidens genidens* sampled in the Patos Lagoon. The dashed line indicates the threshold value between freshwater and estuarine habitats. The arrows indicate the age (years) along the otolith profiles. To assist in viewing the fluctuation of Sr:Ca ratio along the profiles of the otoliths, the absolute values has been converted into 3-order moving averages.

Tanji, 1981, 1983; Araújo, 1988; Rabitto & Abilhôa, 1999; Gomes & Araújo, 2004; Schmidt *et al.*, 2008; Denadai *et al.*, 2012).

Several findings support the rationale that otolith elemental composition reflects the surrounding water composition and, indirectly, salinity patterns in the sampled region. First, mean Sr:Ca and Ba:Ca ratios in the edges of otoliths of *G. genidens* differed significantly between individuals caught at estuarine and freshwater sites. We observed high Sr:Ca ratios in otoliths towards estuarine/marine waters and high Ba:Ca ratios towards fresh water, as has already been demonstrated for other marine and estuarine species in this same region (Albuquerque *et al.*, 2012; Mai *et al.*, 2014; Condini *et al.*, 2016; Avigliano *et al.*, 2017). Second, Sr:Ca ratios in the water along the Patos Lagoon increase with salinity, particularly from zero to 15 PSU (Albuquerque *et al.*, 2012), which supports that Sr:Ca variations in otoliths may indicate fish movements along the local salinity gradient. Third, we analysed a subsample of individuals with standardized sizes and the general findings remained nearly identical to the ones obtained for the whole sample, which supports the absence of significant ontogenetic influence on Sr:Ca and Ba:Ca incorporation into *G. genidens* otoliths. Based on these three lines of evidence, the fluctuations of Sr:Ca in otoliths will hereafter be interpreted as fish movements across the salinity gradient along the Patos Lagoon.

The analysis of individual core-to-edge chemical profiles in otoliths suggests *G. genidens* may present two distinct patterns of habitat use associated with their origins (early development) in estuarine waters (type 1) and fresh water (type 2). The Sr:Ca profiles also revealed that all sampled fish show estuarine signatures during a consistent part of their juvenile life. Hence, even fish born in fresh water appear to migrate to estuarine waters, where they grow for a while. Based on our

findings, we hypothesize that *G. genidens* remains in the estuarine region for about one to five years. After that, most individuals would stay in the estuary throughout their whole lifespan, whereas others may migrate towards fresh water, where they may stay for extended periods. Therefore, *G. genidens* show a quite plastic and variable use of estuarine and freshwater habitats. Our findings corroborate the results of Araújo (1988), which suggests that young fish (recruits) are found exclusively in estuarine areas. Future studies should evaluate if this pattern may represent a strategy to explore the high autochthonous estuarine production found in this lagoon (Seeliger *et al.*, 1997).

Such intraspecific variation in habitat use and natal habitats (estuary vs freshwater) could be explained in the light of the partial migration theory, which claims the existence of groups of individuals behaving as residents or migrants in the same population (Chapman *et al.*, 2012a). Apparently, the decision to stay or migrate is linked to distinct environmental conditions or biological interactions (e.g. competition and/or predation pressure) experienced by each individual fish within the population (Chapman *et al.*, 2012b). We speculate that some individuals of *G. genidens* may seek freshwater reaches of the Patos Lagoon to ameliorate interspecific competition with the congeneric species *G. barbuis* and *G. planifrons* (Araújo, 1988), which also use the estuarine zone of this lagoon as feeding grounds (Araújo, 1984; Pereyra *et al.*, 2016). Partial migration and the occurrence of contingents were also reported for the congeneric marine catfish *G. barbuis*, in the adjacent La Plata River, Argentina and south Brazil (Avigliano *et al.*, 2017). This congeneric marine catfish from La Plata estuary and other southern Brazilian estuaries also exhibited complex life histories with four different displacement patterns, ranging from estuarine-residency to freshwater-residency (Avigliano *et al.*, 2017).

Associating otolith chemical profiles to gonad analysis provided us with useful insights on habitat use and displacement patterns along salinity gradients. Our results uncovered a marked plasticity in habitat use by *G. genidens* that has not been previously described. Many studies have suggested that reproduction was restricted to estuarine areas (Mishima & Tanji, 1981; Chao *et al.*, 1985; Araújo, 1988; Gomes & Araújo, 2004; Schmidt *et al.*, 2008; Denadai *et al.*, 2012), but our findings revealed that this species also spawns in truly freshwater sites fairly distant (~180 km) from the estuary. This consistent use of fresh water was also demonstrated by the low Sr:Ca ratios in the otolith core of some individuals (e.g. 'type 2' habitat use pattern). This pattern was independently corroborated by microscopic gonadal analysis, which revealed clear signs of spawning and post-spawning for both sexes in freshwater sites at the extreme north portion of Patos Lagoon.

We recognize that the observed otolith chemical profiles may also be influenced by specific climatic events that alter the regular freshwater discharge of the Patos Lagoon into the estuary. For example, strong El Niño events (e.g. 1982–83 and 1997–98) have been associated with high inflow of fresh water at Patos Lagoon estuary due to increased rainfall over its drainage basin (Garcia *et al.*, 2004). Also, numerical simulations suggested that El Niño events may decrease the frequency and intensity of ocean water intrusions into the estuary, leading to abnormally low salinities in the area (Barros *et al.*, 2014). However, our samples comprise fish from age zero to 20 years, thus decreasing the importance of sporadic climatic events on the composition of *G. genidens* otoliths. Thus, we assume these climatic events did not hinder our ability to interpret fish movements from otolith chemistry. Furthermore, we emphasize that the consistent use of limnic regions of Patos Lagoon by *G. genidens* was supported not only by

Table 1. Total number of individuals sampled (N), mean and range (min-max) values of total length (mm), total number of individuals with gonad analysed (n), mean and range (min-max) of gonadosomatic index (GSI, g) in three development stages (developing, spawning capable, regression) of the Guri catfish (*Genidens genidens*)

Sex	N	Total length (mm) Mean (Min – Max)	Gonadosomatic index (GSI, g)		
			Developing	Spawning capable	Regression
Female	53	363.7 (272–450)	n = 14 2.5 (0.9–3.8)	n = 15 4.9 (4.0–6.5)	n = 24 0.6 (0.3–1.2)
Male	36	324.7 (123–435)		n = 22 0.1 (0.08–0.17)	n = 14 0.05 (0.03–0.07)

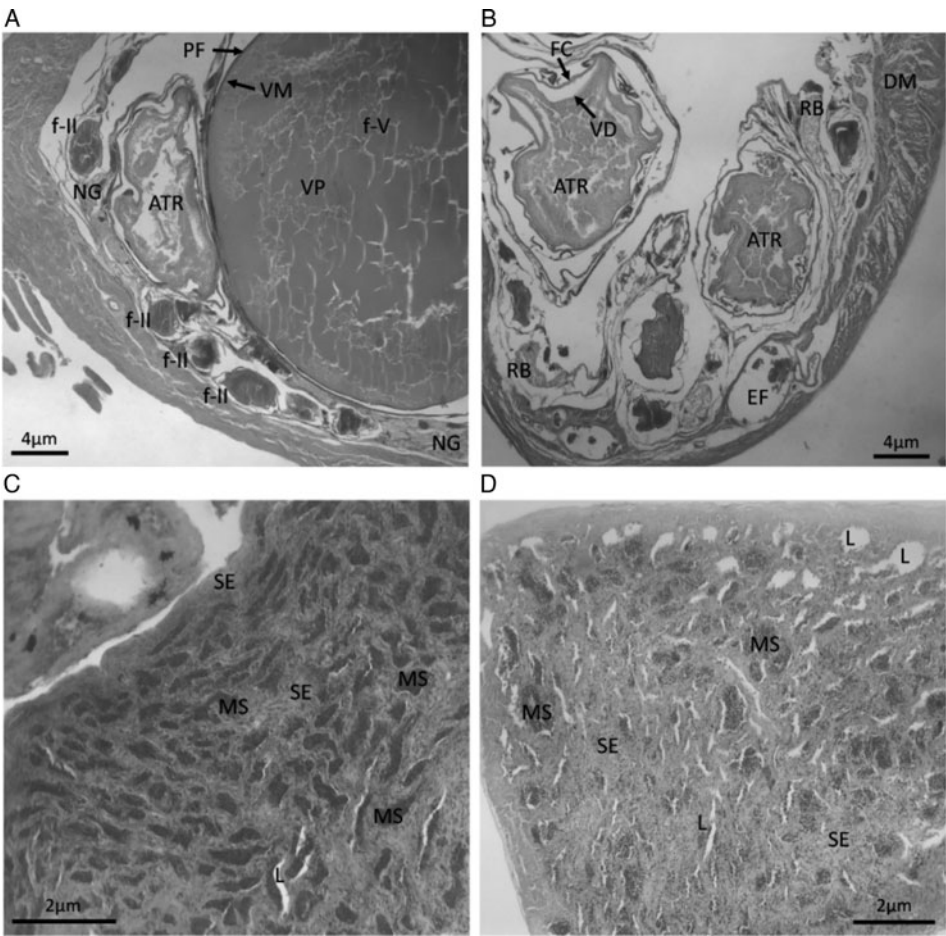



Fig. 5. Cross section of *Genidens genidens* ovaries and testes in different stages of development, obtained from individuals captured at the fresh-water portion of Patos Lagoon. (A) Spawning capable ovary with oocytes in distinct stages of development; (B) Empty ovary presenting disarranged tissues with empty space due to oocytes released; (C) Mature spawning capable testes presenting filled seminiferous tubules; (D) Empty testes presenting few remaining sperm; ATR, atretic oocytes; f-II, Reserve stock oocytes; f-V, oocytes with full vitellogenesis; NG, Nest of young germinative cells; VM, vitelline membrane; PF, palisade of follicular cells; VP, vitelline platelets; DM, ovary distended membrane; FC, follicular cells; RB, residual body; EF, empty follicle; SE, seminiferous epithelium; L, lumen and MS, mature spermatozoa.

otolith chemistry, but also by direct sampling in fresh water and gonadal histological analysis.

By accepting the hypothesis that part of the *G. genidens* population consistently uses fresh water for reproduction and early development, we challenge the current classification of this marine catfish species as estuarine-resident, as suggested by several authors (Mishima & Tanji, 1981, 1983; Araújo, 1988; Rabitto & Abilhôa, 1999; Gomes & Araújo, 2004; Schmidt *et al.*, 2008; Denadai *et al.*, 2012). In the light of our evidence, we suggest that the ‘estuarine and freshwater guild’ (Potter *et al.*, 2013) may be more appropriated to encompass the plasticity in displacement patterns and spawning habitats observed for *G. genidens* in the present study. The ‘estuarine and freshwater guild’ includes species in which the individuals complete their life cycles within the estuary, but also includes fish who consistently use freshwater habitats (Potter *et al.*, 2013). Moreover, it is important to consider

that *G. genidens* may present distinct habitat-use patterns along other estuarine systems since these are dynamic environments with usually specific environmental variations. Therefore, additional studies may be required to better understand the role of *G. genidens* and other catfishes to estuarine and freshwater ecosystems along South America.

Supplementary material. The supplementary material for this article can be found at <https://doi.org/10.1017/S0025315419000493>

Author ORCIDs.  Mario V. Condini, 0000-0003-4917-7782; Gianfranco Ceni, 0000-0001-6236-1221; Nelson F. Fontoura, 0000-0001-9978-2812

Acknowledgements. We thank the Pelagic Fisheries Resources Laboratory at FURG for logistical support and otolith processing. This study was supported by the programme ‘Long Term Ecological Research (LTER) site 8: Estuary of the Patos Lagoon and adjacent marine region’ of the Ministry of Science and Technology (MCT) and the National Scientific and

Technological Development Council (CNPq); and CNPq productivity scholarship (number: 310141/2015-0) and CNPq scholarship (number: 434466/2016-6).

References

- Acero PA and Betancur RR (2007) Monophyly, affinities, and subfamilial clades of sea catfishes (Siluriformes: Ariidae). *Ichthyological Exploration of Freshwaters* **18**, 133–143.
- Albuquerque CQ, Miekeley N and Muelbert JH (2010) Whitemouth croaker, *Micropogonias furnieri*, trapped in a freshwater coastal lagoon: a natural comparison of freshwater and marine influences on otolith chemistry. *Neotropical Ichthyology* **8**, 311–320.
- Albuquerque CQ, Miekeley N, Muelbert JH, Walther BD and Jaureguizar AJ (2012) Estuarine dependency in a marine fish evaluated with otolith chemistry. *Marine Biology* **159**, 2229–2239.
- Arai T, Kotake A, Harrod C, Morrissey M and McCarthy TK (2019) Ecological plasticity of the European eel *Anguilla anguilla* in a tidal Atlantic lake system in Ireland. *Journal of the Marine Biological Association of the United Kingdom*. doi: 10.1017/S0025315419000031.
- Araújo FG (1984) Hábitos alimentares de três bagres marinhos (Ariidae) no Estuário da Lagoa dos Patos (RS), Brasil. *Atlântica* **7**, 43–67.
- Araújo FG (1988) Distribuição, abundância relativa e movimentos sazonais de bagres marinhos (Siluriformes, Ariidae) no Estuário da Lagoa dos Patos (RS), Brasil. *Revista Brasileira de Zoologia* **5**, 509–543.
- Araújo FG (1996) Composição e estrutura da comunidade de peixes do médio e baixo Rio Paraíba do Sul, RJ. *Revista Brasileira de Biologia* **56**, 111–126.
- Aschenbrenner A, Ferreira BP and Rooker JR (2016) Spatial and temporal variability in the otolith chemistry of the Brazilian snapper *Lutjanus alexandrei* from estuarine and coastal environments. *Journal of Fish Biology* **89**, 753–769.
- Avigliano E and Volpedo AV (2016) A review of the application of otolith microchemistry toward the study of Latin American fishes. *Reviews in Fisheries Science & Aquaculture* **24**, 369–384.
- Avigliano A, Leisen M, Romero R, Carvalho B, Velasco G, Vianna M, Barra F and Volpedo AV (2017) Fluvio-marine travelers from South America: cyclic amphidromy and freshwater residency, typical behaviors in *Genidens barbatus* inferred by otolith chemistry. *Fisheries Research* **193**, 184–194.
- Barbieri LR, Santos RP and Andreata JV (1992) Reproductive biology of the marine catfish, *Genidens genidens* (Siluriformes, Ariidae), in the Jacarepaguá lagoon system, Rio de Janeiro, Brasil. *Environmental Biology of Fishes* **35**, 23–35.
- Barletta M and Blaber SJM (2007) Comparison of fish assemblages and guilds in tropical habitats of the Embury (Indo-West Pacific and Caeté (Western Atlantic) estuaries. *Bulletin of Marine Science* **80**, 647–680.
- Barros GP, Marques WM and Kirinus EP (2014) Influence of the freshwater discharge on the hydrodynamics of Patos Lagoon, Brazil. *International Journal of Geography* **5**, 925–942.
- Brown-Peterson NJ, Wyanski DM, Saborido-Rey F, Macewicz BJ and Lowerre-Barbieri SK (2011) A standardized terminology for describing reproductive development in fishes. *Marine and Coastal Fisheries* **3**, 52–70.
- Campana SE (1999) Chemistry and composition of fish otoliths: pathways, mechanisms and applications. *Marine Ecology Progress Series* **188**, 263–297.
- Campana SE (2001) Accuracy, precision and quality control in age determination, including a review of the use and abuse of age validation methods. *Journal of Fish Biology* **59**, 197–242.
- Campana SE, Chouinard GA, Hanson JM, Frechet A and Bratley J (2000) Otolith elemental fingerprints as biological tracers of fish stocks. *Fisheries Research* **46**, 343–357.
- Ceni G, Fontoura NF and Cabral H (2016) The freshwater artisanal fishery of Patos Lagoon. *Journal of Fish Biology* **89**, 337–354.
- Chao LH, Pereira LE and Vieira JP (1985) Estuarine fish community of the dos Patos Lagoon, Brazil: a baseline study. In Yáñez-Arancibia A (ed.) *Fish Community Ecology in Estuaries and Coastal Lagoons: Towards Ecosystem Integration*. Mexico: UNAM Press, pp. 429–450.
- Chapman BB, Skov C, Hulthén K, Brodersen J, Nilsson PA, Hansson LA and Brönmark C (2012a) Partial migration in fishes: definitions, methodologies and taxonomic distribution. *Journal of Fish Biology* **81**, 479–499.
- Chapman BB, Skov C, Hulthén K, Brodersen J, Nilsson PA, Hansson LA and Brönmark C (2012b) Partial migration in fishes: causes and consequences. *Journal of Fish Biology* **81**, 456–478.
- Chaves PTC (1994) A incubação de ovos e larvas em *Genidens genidens* (Valenciennes) (Siluriforme, Ariidae) da Baía de Guaratuba, Paraná, Brasil. *Revista Brasileira de Zoologia* **11**, 641–648.
- Chittaro PM, Finley RJ and Levin PS (2009) Spatial and temporal patterns in the contribution of fish from their nursery habitats. *Oecologia* **160**, 49–61.
- Condini MV, Fávoro LF, Varela AS and Garcia AM (2014a) Reproductive biology of the dusky grouper (*Epinephelus marginatus*) at the southern limit of its distribution in the south-western Atlantic. *Marine and Freshwater Research* **65**, 142–152.
- Condini MV, Albuquerque CQ and Garcia AM (2014b) Age and growth of dusky grouper (*Epinephelus marginatus*) (Perciformes: Epinephelidae) in the southwestern Atlantic, with a size comparison of offshore and littoral habitats. *Fishery Bulletin* **112**, 311–321.
- Condini MV, Tanner S, Reis-Santos P, Albuquerque CQ, Saint-Pierre T, Vieira J, Cabral H and Garcia AM (2016) Prolonged estuarine habitat use by dusky grouper *Epinephelus marginatus* at subtropical latitudes revealed by otolith microchemistry. *Endangered Species Research* **29**, 271–277.
- Dantas DV, Barletta M, Costa ME, Barbosa-Cintra SCT, Possatto FE, Ramos JAA, Lima ARA and Saint-Paul U (2010) Movement patterns of catfishes (Ariidae) in a tropical semi-arid estuary. *Journal of Fish Biology* **76**, 2540–2557.
- Denadai MR, Bessa E, Santos FB, Fernandez WS, Santos FMC, Feijó M, Arcuri ACD and Turra A (2012) Life history of three catfish species (Siluriformes: Ariidae) from southeastern Brazil. *Biota Neotropical* **12**, 74–83.
- Duponchelle F, Pouilly M, Pécheyran C, Hauser M, Renno JF, Panfili J, Darnaude AM, García-Vasquez A, Carvajal-Vallejos F, García-Davila C, Doria C, Berail S, Donard A, Sondag F, Santos RS, Nunez J, Point D, Labonne M and Baras E. (2016) Trans-Amazonian natal homing in giant catfish. *Journal of Applied Ecology* **53**, 1511–1520.
- Elsdon TS and Gillanders BM (2002) Interactive effects of temperature and salinity on otolith chemistry: challenges for determining environmental histories of fish. *Canadian Journal of Fisheries and Aquatic Sciences* **59**, 1796–1808.
- Elsdon TS, Wells BK, Campana SE, Gillanders BM, Jones CM, Limburg KE, Secor DH, Thorrold SR and Walther BD (2008) Otolith chemistry to describe movements and life history parameters of fishes: hypotheses, assumptions, limitations and inferences. *Oceanography and Marine Biology* **46**, 297–330.
- Figueiredo JL and Menezes NA (1978) *Manual de Peixes Marinhos do Sudeste do Brasil. II Teleostei (1)*. São Paulo: Museu de Zoologia da Universidade de São Paulo.
- Fontoura NF, Vieira JP, Becker FG, Rodrigues LR, Malabarba LR, Schulz UH, Möller OO, Garcia AM and Vilella FS (2016) Aspects of fish conservation in the upper Patos Lagoon basin. *Journal of Fish Biology* **89**, 315–336.
- Fontoura NF, Schulz UH, Alves TP, Silveira TCL, Pereira JJ and Antonetti DA (2019) How far upstream: a review of estuary-fresh water fish movements in a large neotropical basin. *Frontiers in Marine Science* **6**, 39.
- Fortunato RC, Galán AR, Alonso IG, Volpedo A and Durà VB (2017) Environmental migratory patterns and stock identification of *Mugil cephalus* in the Spanish Mediterranean Sea, by means of otolith microchemistry. *Estuarine, Coastal and Shelf Science* **188**, 174–180.
- Fuji T, Kasai A, Ueno M and Yamashita Y (2016) Importance of estuarine nursery areas for the adult population of the temperate seabass *Lateolabrax japonicus*, as revealed by otolith Sr:Ca ratios. *Fisheries Oceanography* **25**, 448–456.
- Garbin T, Castello JP and Kinas PG (2014) Age, growth, and mortality of the mullet *Mugil liza* in Brazil's southern and southeastern coastal regions. *Fisheries Research* **149**, 61–68.
- Garcia AM, Vieira JP and Winemiller KO (2001) Dynamics of the shallow-water fish assemblage of the Patos Lagoon estuary (Brazil) during cold and warm ENSO episodes. *Journal of Fish Biology* **59**, 1218–1238.
- Garcia AM, Vieira JP, Winemiller KO and Grim M (2004) Comparison of 1982–1983 and 1997–1998 El Niño effects on the shallow-water fish assemblage of the Patos Lagoon Estuary (Brazil). *Estuaries* **27**, 905–914.
- Garcia AM, Vieira JP and Burns MDM (2006) *Genidens genidens* (Cuvier) (Pisces, Ariidae), oral incubation of eggs. *Panamjas* **1**, 87.
- Gomes ID and Araújo FG (2004) Reproductive biology of marine catfishes (Siluriformes, Ariidae) in the Sepetiba bay, Brazil. *Revista de Biologia Tropical* **52**, 143–156.
- Gomes ID, Araújo FG, Azevedo MCC and Pessanha ALM (1999) Biologia reprodutiva dos bagres marinhos *Genidens genidens* (Valenciennes) e *Cathorops spixii* (Agassiz) (Siluriformes, Ariidae), na Baía de Sepetiba, Rio de Janeiro, Brasil. *Revista Brasileira de Zoologia* **16**, 171–180.

- Hegg JC, Giarrizzo T and Kennedy BP (2015) Diverse early life-history strategies in migratory Amazonian catfish: implications for conservation and management. *PLoS ONE* **10**, e0129697.
- Jakobsen T, Fogarty MJ, Megrey BA and Moksness E (2009) *Fish Reproductive Biology: Implications for Assessment and Management*. Oxford: Blackwell.
- Jessop BM, Shiao JC and Iizuka Y (2013) Methods for estimating a critical value for determining the freshwater/estuarine habitat residence of American eels from otolith Sr:Ca data. *Estuarine, Coastal and Shelf Science* **133**, 293–303.
- Kjerfve B (1986) Comparative oceanography of coastal lagoons. In Wolfe DA (ed.) *Estuarine Variability*. New York, NY: Academic Press, pp. 63–82.
- Mai ACG, Condini MV, Albuquerque CQ, Loebmann D, Saint-Pierre TD, Miekeley N and Vieira JP (2014) High plasticity in habitat use of *Lycengraulis grossidens* (Clupeiformes, Engraulidae). *Estuarine, Coastal and Shelf Science* **141**, 17–25.
- Marceniuk AP and Menezes NA (2007) Systematics of the family Ariidae (Ostariophysi, Siluriformes), with a redefinition of the genera. *Zootaxa* **1416**, 1–126.
- McMillan DB (2007) *Fish Histology: Female Reproductive Systems*. Dordrecht: Springer.
- Milani PCC and Fontoura NF (2007) Diagnóstico da pesca artesanal na Lagoa do Casamento, sistema nordeste da Laguna dos Patos: uma proposta de manejo. *Biociências* **15**, 82–125.
- Mishima M and Tanji S (1981) Distribuição geográfica dos bagres marinhos (Osteichthyes, Ariidae) no complexo estuarino lagunar de Cananéia (25° S, 48° W). *Boletim do Instituto de Pesca* **8**, 157–172.
- Mishima M and Tanji S (1983) Maturação e desova dos bagres marinhos (Osteichthyes, Ariidae) do complexo lagunar de Cananéia (25°S, 48°W). *Boletim do Instituto de Pesca* **10**, 129–141.
- Mohan JA, Halden NM and Rulifson RA (2015) Habitat use of juvenile striped bass *Morone saxatilis* (Actinopterygii: Moronidae) in rivers spanning a salinity gradient across a shallow wind-driven estuary. *Environmental Biology of Fishes* **98**, 1105–1116.
- Möller OO and Fernandes EH (2010) Hidrologia e hidrodinâmica. In Seeliger U and Odebrecht C (eds) *O Estuário da Lagoa dos Patos: Um Século de Transformações*. Rio Grande: FURG, pp. 17–27.
- Nelson JS (2006) *Fishes of the World*, 4th Edn. Hoboken, NJ: Wiley.
- Patterson HM, Kingsford MJ and McCulloch MT (2005) Resolution of the early life history of a reef fish using otolith chemistry. *Coral Reefs* **24**, 222–229.
- Pereyra PER, Mont'Alverne R and Garcia AM (2016) Carbon primary sources and estuarine habitat use by two congeneric ariid catfishes in a subtropical coastal lagoon. *Zoologia (Curitiba Online)* **33**, e20150075.
- Potter IC, Tweedley JR, Elliott M and Whitfield AK (2013) The ways in which fish use estuaries: a refinement and expansion of the guild approach. *Fish in Fisheries* **16**, 230–239.
- Rabitto IS and Abilhó V (1999) A alimentação do bagre *Genidens genidens* (Valenciennes 1839) em um banco areno-lodoso da ilha do Mel, Paraná, Brasil. *Arquivos de Ciências Veterinárias e Zoologia da UNIPAR* **2**, 143–153.
- Reis EG (1986) Age and growth of the marine catfish, '*Netuma barba*' (Siluriformes, Ariidae) in the estuary of the Patos Lagoon (Brasil). *Fishery Bulletin* **84**, 679–686.
- Rocha GRA and Freire KMF (2009) Biology and dominance relationships of the main fish species in the Lake Encantada, Ilhéus, Brazil. *Acta Limnologica Brasiliensia* **21**, 309–316.
- Rodrigues FL, Cabral HN and Vieira JP (2015) Assessing surf-zone fish assemblage variability in southern Brazil. *Marine and Freshwater Research* **66**, 106–119.
- Schmidt TCS, Martins IA, Reigada ALD and Dias JF (2008) Taxocenose de bagres marinhos (Siluriformes, Ariidae) da região estuarina de São Vicente, SP, Brasil. *Biota Neotropica* **8**, 73–81.
- Schwingel PR and Castello JP (1990) Validación de la edad y el crecimiento de la corvina (*Micropogonias furnieri*) en el sur de Brasil. *Frento Marítimo* **7A**, 19–24.
- Secor DH, Henderson-Arzapalo A and Piccoli PM (1995) Can otolith micro-chemistry chart patterns of migration and habitat utilization in anadromous fishes? *Journal of Experimental Marine Biology and Ecology* **192**, 15–33.
- Seeliger U (2001) The Patos Lagoon estuary, Brazil. In Seeliger U and Kjerfve B (eds) *Coastal Marine Ecosystems of Latin America*. Berlin: Springer-Verlag, pp. 167–182.
- Seeliger U, Odebrecht C and Castello JP (1997) Energy flow and habitats in the Patos Lagoon estuary. In Seeliger U, Odebrecht C and Castello JP (eds) *Subtropical Convergence Environments: The Coast and Sea in the Southwestern Atlantic*. Heidelberg: Springer-Verlag, pp. 65–89.
- Tabouret H, Bareille G, Claverie F, Pécuyer N, Prouzet P and Donard OFX (2010) Simultaneous use of strontium:calcium and barium:calcium ratios in otoliths as markers of habitat: application to the European eel (*Anguilla anguilla*) in the Adour basin, South West France. *Marine Environmental Research* **70**, 35–45.
- Thorrold SR, Latkoczy C and Swart PK (2001) Natal homing in a marine fish metapopulation. *Science* **291**, 297–299.
- Vieira JP, Garcia AM and Moraes L (2010) A assembléia de peixes. In Seeliger U, Odebrecht C and Castello JP (eds), *Subtropical Convergence Environments: the Coast and Sea in the Southwestern Atlantic*. Heidelberg: Springer-Verlag, pp. 77–88.
- Wells RJD, Rooker JR and Itano DG (2012) Nursery origin of yellowfin tuna in the Hawaiian Islands. *Marine Ecology Progress Series* **461**, 187–196.