

PONTIFÍCIA UNIVERSIDADE CATÓLICA DO RIO GRANDE DO SUL  
FACULDADE DE BIOCÊNCIAS  
PROGRAMA DE PÓS-GRADUAÇÃO EM BIOCÊNCIAS – ZOOLOGIA

**Dissertação de Mestrado**

**ESTUDO FILOGEOGRÁFICO DE *Bothrops jararaca* (WIED, 1824)  
BASEADO NO DNA MITOCONDRIAL (SQUAMATA: SERPENTES:  
VIPERIDAE).**

**AUTOR: FELIPE GOBBI GRAZZIOTIN**

**ORIENTADOR: Dr. THALES DE LEMA**

**CO-ORIENTADOR: Dr. SANDRO L. BONATTO**

PORTO ALEGRE – RS – BRASIL

2004

# Sumário

|                                     |    |
|-------------------------------------|----|
| Resumo.....                         | v  |
| Abstract.....                       | vi |
| Apresentação.....                   | 1  |
| 1. Histórico do Problema.....       | 1  |
| 1.1. Introdução.....                | 1  |
| 1.2. O gênero <i>Bothrops</i> ..... | 1  |
| 1.3. <i>Bothrops jararaca</i> ..... | 2  |
| 1.3.1. Descrição.....               | 2  |
| 1.3.2. Distribuição.....            | 3  |
| 1.3.3. Hábitat.....                 | 4  |
| 1.3.4. Abundância.....              | 4  |
| 1.3.5. História Natural.....        | 5  |
| 1.4. Filogeografia.....             | 5  |
| 2. Objetivos.....                   | 6  |
| 3. Referências Bibliográficas.....  | 6  |
| Artigo científico.....              | 8  |

## Agradecimentos

Aquele que acredita que fez ou fará, que é ou será alguma coisa sozinho erra duas vezes. Primeiro pela prepotência e segundo por perder a oportunidade de compartilhar experiências. Em nenhum dia de meu mestrado estive sozinho, sempre estiveram comigo familiares, amigos e colegas e eu sei o quanto eles passaram a fazer parte da minha vida, tanto que quando olho para mim encontro muito deles.

Gostaria muito de agradecer a todos, não somente aos que participaram diretamente desta dissertação. Infelizmente por atenção à tradição, restringirei os agradecimentos apenas aos mais próximos ao mestrado e a família.

Agradeço a CAPES pela bolsa e a PUC-RS pela oportunidade e suporte.

Agradeço ao Prof.Dr.Thales de Lema pela entrega incondicional que faz de sua vida à herpetologia. Desde minha infância, quando o conheci, o admiro e estimo, por isso agradeço a honra de ter sido orientando de uma lenda viva da herpetologia brasileira.

Gostaria muito de agradecer ao Dr. Sandro Luis Bonatto. Por ter me aceitado em seu laboratório, por ter tido paciência durante minhas falhas e compartilhado alegrias durante os acertos, pela orientação, amizade e destinação de verba para a realização de meu projeto, mas principalmente por ter convivido com ele. Sandro tu és o cara!!

Existem pessoas que surgem na vida como guias para mostrar caminhos que nunca encontraríamos sozinhos. Muito obrigado ao Dr. Sergio Echeverrigaray por ter surgido na minha vida e transformado ela em algo melhor. Assim como muito obrigado pela ajuda e liberação de seu laboratório para a realização deste projeto.

Agradeço ao amigo Markus Monzel pelas amostras, amizade e pelo compartilhamento de projetos e ambições profissionais.

Gostaria de agradecer a todos aqueles que disponibilizaram atenção e/ou amostras de jararacas para a realização deste trabalho, bem como suas respectivas instituições: Agradeço a Francisco Luís Franco, Otávio A. V. Marques, Herbert Ferrarezzi, Wilson Fernandes e Maria da Graça Salomão pesquisadores do Instituto Butantan; a Aníbal Melgarjo pesquisador do Instituto Vital Brazil; A Ricardo Maciel e Giselle Agostini Cotta pesquisadores da FUNED, a Marcos Dibernardo e Gláucia F. Pontes pesquisadores do laboratório de Herpetologia da PUC-RS; a Paula Jaqueline Demeda pesquisadora da UCS, e a todos bolsistas e funcionários destas instituições que auxiliaram na coleta de amostras.

Agradeço muito pelo companheirismo a todos os amigos dos laboratórios que utilizei para a realização do projeto. Aos amigos do laboratório de herpetologia MCT/PUC-RS em especial aos meus colegas de turma Rafa e Dino, mas sem esquecer as saídas a campo e a parceria de toda a turma do fundão.

A galera do Laboratório de Biotecnologia Vegetal e Microbiologia Aplicada UCS meus velhos e bons amigos, nas pessoas da Ana pela confiança e da Manu por ter me auxiliado no começo de tudo.

Aos amigos do Centro de Biologia Genômica e Molecular, principalmente aos professores Maurício e Jomar pelo apoio e confiança e aos amigos Paulinho, Fernanda Britto, e Cladi valeu pela força.

Agradeço ao grande pequeno Nelson pela leitura e discussão do trabalho e principalmente pela amizade e socialização do conhecimento.

A minha amiguinha Fernanda Sales Luis Vianna por se mostrar sempre disposta a ajudar e responder aos meus conselhos, mesmo que nem eu os siga. E claro obrigado por suportar minha desorganização e loucura.

Agradeço ao meu avô Amadeu e minha avó Cecília por terem me acolhido em sua casa no início do mestrado, e ao meu avô principalmente pelo seu exemplo de aguerrido defensor da família e do trabalho honesto.

A minha Tia Laine e ao meu primo Gustavo por toda sua disposição em me hospedar. Pelos papos, jantas e risos, obrigado mesmo, um dia espero poder retribuir.

Ao meu “brother” Gilberto por estar sempre disposto a ajudar e pela força durante os momentos difíceis.

A minha mãe que sempre foi guerreira e de quem me orgulho muito e sem a qual nada disso teria sido possível.

E finalmente muito obrigado a minha mulher Patrícia, não tenho palavras para expressar o que representou ter te encontrado, não agradeço só por tua paciência e teu carinho, isso eu sempre tive, mesmo antes do mestrado e principalmente antes da universidade, agradeço mesmo é por tu existires.

Ao meu Pai...

## Resumo

*Bothrops jararaca* distribui-se na região da Mata Atlântica, concentrando-se nos estados do sul e sudeste do Brasil. Possui grande variação nos padrões de desenho e cor, entretanto sua história evolutiva é desconhecida. Visando avaliar a variabilidade do gene mitocondrial *cyt-b* sequenciamos aproximadamente 700pb de 154 exemplares de 96 localidades (abrangendo sete estados brasileiros) mais cinco espécimes insulares (duas *B. insularis* e três *B. alcatraz*). As relações filogenéticas foram estimadas utilizando três métodos: Máxima-Parcimônia; Neighbor-Joining e Maximum-likelihood com seqüências de *B. atrox* e *B. erythromelas* como grupos externos. Estas análises demonstram, com alto suporte, a formação de dois clados: um majoritariamente composto de indivíduos do sudeste (SEC) e outro com indivíduos do sul (SC). Comparativamente a diversidade média dentro de *B. jararaca* (2,9%) é maior que as espécies de *Bothrops* até o momento avaliadas. SEC possui 30 haplótipos e diversidade nucleotídica de 0,01, SC possui 14 haplótipos e diversidade nucleotídica de 0,007. Nas análises baseadas em simulações de anelamento (SAMOVA) não foi possível encontrar o agrupamento com o maior  $F_{CT}$ , pois este aumentou em função do número de grupos selecionados. Contudo foram definidos dois grupos populacionais: sudeste e sul, baseado nas árvores filogenéticas e nos networks inferidos utilizando Median-joining e Parcimônia Estatística. Em todas as análises os grupos mantiveram-se com apenas dois indivíduos migrantes, sendo que sua estruturação apresentou  $F_{ST}$  de 0,70 e  $N_m$  de 0,21. O limite aproximado da divisão entre os grupos relaciona-se com o leito do Rio Paranapanema, entretanto não existe fundamentação para afirmar que este rio tenha sido a barreira para o fluxo gênico. O tempo de divergência entre os dois grupos foi estimado entre 3,6 e 1,0 milhões de anos o que situaria o evento cladogênico no final do Plioceno e início do Peistoceno, período de grandes mudanças climáticas que poderiam ter fragmentado a população ancestral.

Os resultados do NCA (Nested Clade Analysis) confirmam uma fragmentação passada como explicação para a estruturação entre os dois grandes clados, além de fluxo gênico restrito para a formação da maioria dos subclados. Análises de Acorrelação espacial contrariamente indicam com alta significância uma variação clinal, contudo este padrão poderia ser gerado pela grande diferença entre os clados. Testes de neutralidade foram significantes apenas para os subclados do SC, assim como, o padrão unimodal nas análises de mismatch distribution, sugerindo um bottleneck moderado seguido de uma expansão populacional para SC.

As espécies insulares: *B. alcatraz* e *B. insularis* agrupam-se no SEC e possuem haplótipos continentais. Contudo provem de subclados distintos dentro de SEC. Estes dados sugerem que a colonização das ilhas ocorreu a poucos milhares de anos, e podem estar associados a flutuação do mar durante o Pleistoceno.

**PHYLOGEOGRAPHIC STUDY OF *Bothrops jararaca* (WIED,  
1824) BASED ON MITOCHONDRIAL DNA (SQUAMATA:  
SERPENTES: VIPERIDAE).**

**Abstract**

*Bothrops jararaca* is a pitviper distributed across the Brazilian Atlantic Forest, mainly in the south and southeastern regions of Brazil, being one of the main causes of the more than 10,000 registered snakebites in Brazil. Large variation in color and drawn patterns has been described, however nothing is known about the population genetic and evolutionary history. We analyzed the sequence variation at the mitochondrial gene cytochrome *b* in 154 individuals from 96 localities and five specimens from two closely related insular species (*B. insularis* and *B. alcatraz*). Phylogenetic and network analyses revealed the existence of a southern and a southeastern clade with high support for all methods. The boundary between the two clades is near to where is today the Paranapanema River, between the São Paulo and the Paraná State, although it seems that this river is not a dispersion barrier to this species. The divergence time for these two clades was estimated at 3.5 to 1.0 millions years BP at the late Pliocene or early Pleistocene, when the tropical rain forest was fragmented by large climatic changes. Our data suggest that the SOC subclade underwent a moderate bottleneck followed by a large size expansion while SEC showed signals of range and size expansion, and absence of a strong bottleneck. The origin of the insular *B. alcatraz* and *B. insularis* occurred in the Late Pleistocene by individuals from the actual *B. jararaca* species, and its origins may be associated with the fluctuation of the sea level at that period.

# APRESENTAÇÃO

## 1. HISTÓRICO DO PROBLEMA

### 1.1 Introdução

*Bothrops jararaca* (Wied, 1824) é uma serpente amplamente distribuída nas áreas mais povoadas do Brasil, não demonstrando problemas em habitar áreas degradadas. Sua distribuição estende-se pelo que representaria a área original da Mata Atlântica (Campbell & Lamar 1989), concentrando-se nos estados do sul e sudeste do Brasil. É juntamente com *B. atrox* a maior causadora de acidentes ofídicos (Sazima 1992), bem como, é frequentemente a *Bothrops* mais abundante nos institutos de pesquisa dentro de sua área de dispersão.

Sua variação morfológica é muito grande, principalmente na coloração de fundo e no padrão dos desenhos (Lema 1994). Entretanto, nada se sabe sobre a variabilidade genética das populações de *B. jararaca*, como também é desconhecida a história evolutiva destas populações.

Os estudos filogeográficos descortinam a história evolutiva de uma linhagem, relacionando-a com sua distribuição geográfica, através, principalmente, das diferenças entre seqüências de DNA mitocondrial (Awise, 2000).

Este projeto tem por objetivo avaliar a variabilidade do gene mitocondrial citocromo b na espécie *B. jararaca*, em uma grande representatividade de sua distribuição, para compreender os processos filogeográficos e inferir sobre a história evolutiva de suas populações.

### 1.2. O gênero *Bothrops*

As serpentes do gênero *Bothrops* apresentam um alto interesse científico nos estudos da herpetofauna Sul-americana, pois são as maiores causadoras de acidentes ofídicos na América Latina (Campbell & Lamar 1989).

Este gênero contém por volta de 31 espécies, comumente chamadas de “jararacas” no Brasil e “lanceheads” nos EUA. A forma em lança da cabeça das serpentes deste gênero é sua característica mais distintiva. Ocorrem principalmente na América do Sul, com uma espécie apenas alcançando a América Central. Existem cinco espécies insulares (*B. caribbaeus*, *B. insularis*, *B. alcatraz* e *B. lanceolatus*) e as continentais exibem uma grande diversidade na

sua distribuição, com espécies estritamente ligadas à mata atlântica (*B. jararaca*, *B. jararacuçu*, *B. cotiara*, *B. fonsecai*) outras ligadas à floresta amazônica (*B. atrox*, *B. brazili*), ao cerrado (*B. moojeni*, *B. itapetiningae*), aos campos (*B. alternatus*) e estepes (*B. ammodytoides*) entre outros ecossistemas onde habitam serpentes deste gênero (Campbell & Lamar 1989).

Atualmente as espécies do gênero *Bothrops* encontram-se com suas relações filogenéticas em discussão devido aos diferentes resultados obtidos pelas várias metodologias utilizadas (Hoge & Romano-Roge 1981; Pesantes 1989; Cadle 1992; Wermam 1992; Wüster *et al.* 1996; Salomão *et al.* 1997; Wüster *et al.* 2002).

### **1.3. *Bothrops jararaca***

#### **1.3.1. Descrição**

*Bothrops jararaca* é uma serpente terrestre de tamanho médio. Possui em média 120 cm de comprimento, podendo chegar a 160 cm, sendo relativamente delgada.

O padrão de coloração desta espécie é extremamente variável. A coloração dorsal de fundo pode ser bronze, pardo, cinza, amarelo, oliva ou próximo ao marrom (Figura 1); é usualmente escura sobre a cabeça e as porções anterior e posterior do corpo. Uma proeminente faixa escura pós-orbital estende-se de trás dos olhos até o ângulo das mandíbulas. A íris é dourada para esverdeada com finas reticulações escuras (Campbell & Lamar 1989).

O padrão dorsal consiste em uma série de desenhos trapezoidais ou subtriangulares, onde os ápices estão sobre a linha vertebral (Campbell & Lamar 1989). Estes desenhos podem ser pardo-escuros marginados por uma linha negra ou totalmente negros (Lema 1994). Eles podem se apresentar opostos, um de cada lado da linha dorsal, ou justapostos. As variações destes desenhos são muitas, desde alongações, fusões, fragmentações e até em alguns indivíduos ausentes na região média do corpo. O ventre pode ser de um esverdeado pálido para um amarelo esbranquiçado, com manchas escuras ou não; e de um cinza alvacentos ao preto irregularmente manchado (Campbell & Lamar 1989).

*B. jararaca* é caracterizada por folidose por possuir 5 – 12 intersupraoculares fracamente quilhadas; 7 – 9 supralabiais; 9 – 13 infralabiais; 20 – 27 fileiras de escamas dorsais no meio do corpo; 170 – 216 ventrais e 51 – 71 subcaudais (a maioria dividida) (Campbell & Lamar 1989).



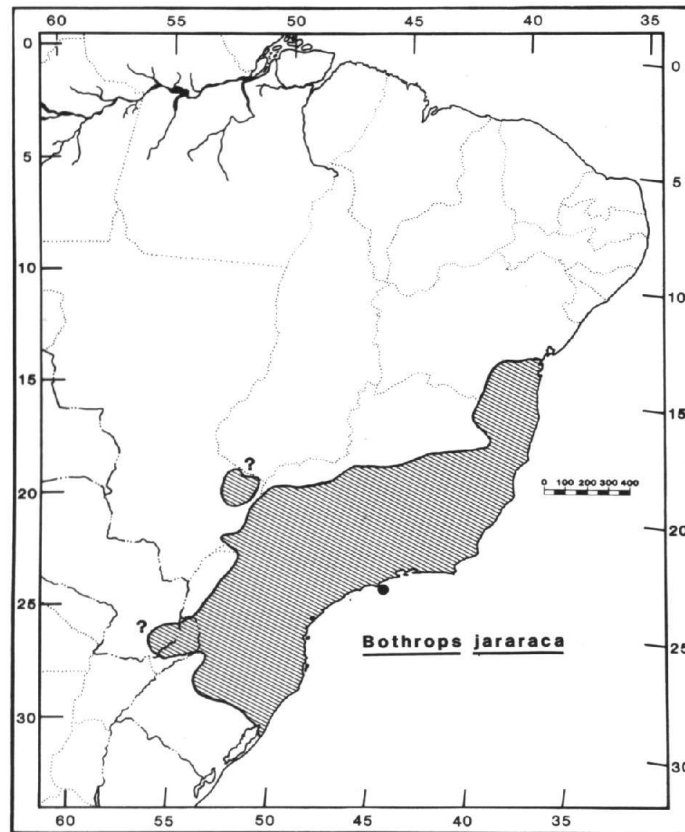
**Figura 1:** Variação do padrão de coloração de *B. jararaca* (Retirado de Campbell & Lamar 1989).



### 1.3.2. Distribuição

*Bothrops jararaca* ocorre no Brasil, Paraguai e Argentina. No Brasil ela é encontrada no sudeste da Bahia, Espírito Santo, Rio de Janeiro, Minas Gerais, São Paulo, Paraná, Santa Catarina e Rio Grande do Sul. Estende-se a oeste para o extremo leste de Mato Grosso. No Paraguai ocorre no nordeste e ao norte da Argentina (Misiones) (Hoge & Romano-Hoge 1981; Campbell & Lamar 1989). A distribuição segundo Campbell & Lamar (1989) pode ser observada na Figura 2.

**Figura 2:** Distribuição de *Bothrops jararaca* segundo Campbell & Lamar (1989). Ponto de interrogação representa possíveis áreas de ocorrência.



### 1.3.3. Hábitat

Uma diversidade de habitats é ocupada por *B. jararaca*: florestas tropicais decíduas e savanas, bem como florestas semitropicais de altitude, campos abertos, regiões cultivadas e áreas impactadas. A distribuição da espécie coincide com o Domínio Morfoclimático Tropical Atlântico (Sazima 1992).

*Bothrops jararaca* pode ser encontrada nas grandes cidades brasileiras. Em dois anos de estudo na cidade de São Paulo, esta espécie representou 12% das serpentes amostradas (Sazima 1992).

### 1.3.4. Abundância

Dentro do gênero *Bothrops* a espécie *Bothrops jararaca* é frequentemente a mais abundante em sua área de distribuição. De um total aproximadamente 490 mil serpentes recebidas pelo Instituto Butantan em 40 anos (1906-1945), por volta de 39% foram *B.*

*jararaca*, enquanto 24% foram *Crotalus durissus* correspondendo a uma taxa de 1,6 *B. jararaca* para cada *C. durissus* (Fonseca, 1949).

Entretanto durante o triênio de 1988, 1989 e 1990, esta taxa reduziu para 0,84:1. Estes números podem indicar uma tendência devido ao contínuo desmatamento do sudeste do Brasil, favorecendo a expansão de *C. durissus* (Sazima 1992).

Estes dados, contudo, não informam sobre a diminuição das populações de *B. jararaca*. A entrada de *B. jararaca* vem constantemente aumentando no Instituto Vital Brazil (A. Melgarejo, com pess.) e na Universidade de Caxias do Sul (P. J. Demeda, com. pess.) e mantendo-se inalterada no Instituto Butantan (F. L. Franco, com. pess.).

### **1.3.5. História Natural**

*B. jararaca* é mais ativa à noite, contudo alguma atividade diurna ocorre. É ativa durante a maior parte do ano, com pouca ou nenhuma atividade durante os meses frios (junho a agosto). As fêmeas grávidas tendem a manter áreas onde termorregulam e se protegem. Raramente estas serpentes se aquecem com luz do sol direta, e a noite utilizam o calor da superfície do solo (Sazima 1992).

As fêmeas tendem a ser maiores e mais volumosas que os machos. Ambos atingem o tamanho adulto por volta do terceiro ou quarto ano e provavelmente reproduzem na estação seguinte. Os nascimentos ocorrem durante a estação chuvosa e o tamanho da ninhada é de aproximadamente 8 –14 filhotes (Sazima 1992).

*B. jararaca* preda principalmente pequenos vertebrados, entretanto ocorre modificação ontogenética na dieta, quando jovem preda principalmente anuros e na fase adulta reoedores. Adultos de *B. jararaca* possuem poucos predadores, enquanto os juvenis são vulneráveis a diversos predadores como gaviões, gambás e serpentes ofiófagas (Sazima 1992).

### **1.4. Filogeografia**

Filogeografia pode ser definido como o estudo dos princípios e processos que governam a distribuição geográfica de linhagens genealógicas (Avise 2000).

As bases históricas desta ciência estão intimamente ligadas aos estudos empíricos com o DNA mitocondrial de animais, iniciados nos anos setenta e que têm sido usadas intensivamente para estudos filogenéticos, nos quais a distribuição dos grupos de haplotipos de mtDNA através da área de uma espécie ou complexos de espécies é utilizado para inferir sobre a história das populações (Puorto *et al.*, 2001)

A filogeografia supre uma ponte empírica e conceitual entre a genética de populações e a biologia filogenética. E mesmo relações explicadas de forma estritamente ecológica, podem através de uma interpretação filogeográfica explicitar as bases filogenéticas para certas características da história natural de um grupo (ver Martins *et al.*, 2001).

A utilização da variação entre seqüências do DNA mitocondrial tem sido a metodologia mais amplamente utilizada para inferir sobre os padrões filogeográficos das espécies (Avice 2000). A mitocôndria, como organela aparentemente provinda de uma simbiose, possui um genoma próprio que se encontra fracamente envolvido com o genoma nuclear (Attardi 1985). A evolução de algumas regiões mitocondriais é extremamente rápida comparada ao DNA nuclear (Nedbal and Flynn 1998) o que habilita o mtDNA a ser utilizado como um marcador molecular para microevolução (Avice 2000).

Análises de padrões filogeográficos intraespecíficos conduzem a observação de barreiras e estruturas geográficas (Eizirik 2001) e levam a um maior avanço em nosso conhecimento dos processos históricos biogeográficos.

## 2. OBJETIVOS

O objetivo geral deste trabalho foi avaliar os processos filogeográficos de *Bothrops jararaca* através da variabilidade mitocondrial.

Para isso buscamos estimar a diversidade genética dentro da espécie utilizando a variabilidade de regiões do gene que codifica para o citocromo *b*. Através desta variabilidade avaliamos sua estruturação geográfica estimando grupos populacionais, bem como, o fluxo gênico entre estas populações, para desta forma inferir sobre os processos demográficos e históricos que moldaram a diversidade de *Bothrops jararaca*.

Este trabalho será submetido à revista **Molecular Ecology**.

## 3. REFERÊNCIAS BIBLIOGRÁFICAS

- Attardi, G. (1985) Animal mitochondrial DNA: Na extreme example of genetic economy. *Int. Ver. Cytol.* 93:93-145.
- Avice, L.C. (2000) *Phylogeography: The history and formation of species*. Harvard University press, Cambridge.
- Cadle, J. E. (1992) Phylogenetic relationships among vipers: immunological evidence. Pp. 41-48 in J. A. Campbell e E. D. Brodie (eds.), *Biology of Pitvipers*. Selva, Tyler.

- Campbell, J. A. & Lamar, W. (1989). *The Venomous Reptiles of Latin America*. Cornell Univ. Press, Ithaca
- Fonseca, F. (1949) *Animais Peçonhentos*. Inst. Butantan, São Paulo.
- Hoge, A. R. & Romano-Hoge, S. A. R. W. L. (1981) - (datado 1978/79). Poisonous snakes of the world. Part 1: Checklist of the pit vipers, Viperoidae, Viperidae, Crotalinae. Mem. Inst. Butantan 42/43:179-309.
- Eizirik, E., Kim, J., Raymond, M.M., Crawshaw, P.G., O'Brien, S.J. and Johnson, W.E. (2001) Phylogeography, population history and conservation genetics of jaguars (*Panthera onca*, Mammalia, Felidae). *Mol. Ecol.* 10: 65-79.
- Lema, T. (1994) Lista comentada dos répteis ocorrentes no Rio Grande do Sul. *Comum. Mus. Ciênc. Tecnol. PUCRS, Sér. Zool.*, 7:41-150.
- Martins, M., Araujo, M.S., Sawaya, R.J., Nunes, R. (2001). Diversity and evolution of macrohabitat use, body size and morphology in a monophyletic group of Neotropical pitviper (*Bothrops*). *J. Zool., Lond.*, 254, 529-538.
- Nedbal, M.A. and Flynn, J.J. (1998) Do combined effects of asymmetric process of replication and DNA damage from oxygen radicals produce a mutation-rate signature in the mitochondrial genome? *Mol. Biol. Evol.* 15:219-223.
- Pesantes, O. S. e Fernandes, W. (1989) Afinidade de *Bothrops erythromelas* aferida através da eletroforese do plasma e da morfologia do hemipênis (Serpentes: Viperidae). Resumos XVI Congr. Bras. Zool. João Pessoa pp. 74-75.
- Puerto, G., Da Graça Salomão, M., Theakston, D.G., Thorpe, R.S., Warrell, D.A. and Wüster, W. (2001) Combining mitochondrial DNA sequences and morphological data to infer species boundaries: phylogeography of lanceheaded pitvipers in the Brazilian Atlantic forest, and the status of *Bothrops pradoi* (Squamata: Serpentes: Viperidae). *J. Evol. Biol.* 14: 527-538.
- Salomão, M. G., Wüster, W., Thorpe, R. S., Touzet, J.-M., and BBBSP. (1997) DNA evolution of South American pitvipers of the genus *Bothrops* (Reptilia: Serpentes: Viperidae). *Symp. Zool. Soc. Lond.* 70:89-98.
- Sazima, I. (1992) Natural history of the jararaca pitviper, *Bothrops jararaca*, in southeaster Brazil. In *Biology of the Pitvipers*, ed Campbell, J. A. and Brodie, E. D. Jr. pp. 199-216, Selva Press, Tyler, Texas.
- Werman, S. D. (1992) Phylogenetic relationships of Central and South American pitvipers of the genus *Bothrops* (sensu lato): cladistic analyses of biochemical and anatomical characters. Pp. 21-40 in J. A. Campbell e E. D. Brodie (eds.), *Biology of Pitvipers*. Selva, Tyler.
- Wüster, W., Thorpe, R. S., Puerto, G., and BBBSP. (1996) Systematics of the *Bothrops atrox* complex (Reptilia: Serpentes: Viperidae) in Brazil: a multivariate analysis. *Herpetologica* 52:263-271.
- Wüster, W., Salomão, M. G., Quijada-Mascareñas, J. A., Thorpe, R. S. & BBBSP (2002) Origin and evolution of the South American pitviper fauna: evidence from mitochondrial DNA sequence analysis. In: *Biology of the vipers* (eds. Schuett, G, W, Höggren, M., Douglas, M. E. & Greene, H. W.), pp. 111-128. Eagle Mountain Publishing, Eagle Mountain, Utah.

**Phylogeography of the *Bothrops jararaca* complex  
(Serpentes: Viperidae): past fragmentation and island  
colonization in the Brazilian Atlantic Forest**

Felipe G. Grazziotin,\* Markus Monzel,† Sergio Echeverrigaray ‡ and Sandro L. Bonatto\*

\*Centro de Biologia Genômica e Molecular, PUCRS, 90619-900, Porto Alegre, RS, Brazil,

†University of Trier, Department of Biogeography, D-54296, Trier, Germany, ‡Laboratório

de Biotecnologia Vegetal e Microbiologia Aplicada, UCS, 95070-560, Caxias do Sul, RS, Brazil

Date of receipt:

Key words: Phylogeography, *Bothrops jararaca*, *Bothrops insularis*, *Bothrops alcatraz*, speciation, Brazilian Atlantic Forest.

**Corresponding author:**

Felipe Gobbi Grazziotin

[felipe.grazziotin@pucrs.br](mailto:felipe.grazziotin@pucrs.br)

Centro de Biologia Genômica e Molecular

Faculdade de Biociências - PUCRS

Av. Ipiranga 6681

90619-900 Porto Alegre, RS, Brazil

FAX: 51-33203500 ramal 3568

Running title: Phylogeography of *Bothrops jararaca* complex

## Abstract

1  
2 The Brazilian Atlantic Forest is one of the world major biodiversity hotspots defined by a  
3 remarkable richness of endemic species and threatened by a severe habitat loss but the  
4 evolution of patterns of endemism within that ecoregion are poorly understood. The jararaca  
5 (*Bothrops jararaca*) is a pitviper endemic of this region, distributed mainly in the southern  
6 and southeastern states of Brazil, responsible for the majority of about 10000 annual  
7 snakebites in Brazil. However, its evolutionary history and patterns of genetic diversity are  
8 largely unknown. Here we analyze sequence variation at the mitochondrial cytochrome *b* gene  
9 in 159 individuals from 96 localities and twelve individuals from two closely related insular  
10 species (*B. insularis* and *B. alcatraz*). Phylogenetic and network analyses of the forty-five  
11 haplotypes found herein revealed the existence of two well supported clades, exhibiting a  
12 southern and a northern range. The divergence time of these two clades was estimated at 1.0  
13 to 3.5 million years ago, a period of intense climatic changes and frequent fragmentation of  
14 the tropical rain forest. Both clades show high haplotype and nucleotide diversity and our data  
15 suggest that the southern clade underwent a moderate bottleneck followed by a large size  
16 expansion while the northern clade shows signals of range expansion in the absence of a  
17 strong bottleneck. The insular species *B. alcatraz* and *B. insularis* share different haplotypes  
18 with mainland individuals of *B. jararaca*, their differentiation occurred very recently and  
19 most likely independently from costal *B. jararaca* populations, possibly associated with past  
20 sea level fluctuations.

# 1           **Introduction**

2           The *Bothrops jararaca* species complex comprises three closely related Atlantic  
3 Forest species of lanceheaded pitvipers (Marques *et al.* 2002): the mainland *B. jararaca* and  
4 the two insular species *B. insularis* and *B. alcatraz*. The distribution of this complex coincides  
5 with the southern and central areas of the Brazilian Atlantic Forest domain (Sazima 1992) and  
6 it occurs in all primary subdivisions of this domain (tropical evergreen mesophytic broadleaf  
7 forest, tropical semi-deciduous mesophytic broadleaf forest and a mixed forest or Araucaria  
8 forest (see Valladares-Padua *et al.* 2002 for Atlantic forest subdivision).

9           The jararaca (*B. jararaca*) is a semi-arboreal pitviper, with an average length of 120  
10 cm distributed primarily in southern and southeastern Brazil (Fig. 1). It also occurs, but with  
11 small frequency in Misiones (northeastern Argentina) and northeastern Paraguay (Hoge &  
12 Romano-Hoge 1981; Campbell & Lamar 1989, Giraudo 2001). Most of the distribution of *B.*  
13 *jararaca* comprises the most populated areas of Brazil in which less than 7.5% of the original  
14 vegetation remains (Myers *et al.* 2000). Despite this fact *B. jararaca* is abundant in this area  
15 (Fonseca, 1949), being responsible for the major part of snake bite envenomation in Brazil  
16 (Ribeiro & Jorge 1990; Clissa 2002). *Bothrops jararaca* is a forest dweller and may be found  
17 in evergreen or semideciduous broadleaf forest, closed scrub and even highly degraded  
18 formations and cultivated fields. Jararacas are usually observed in proximity to vegetational  
19 cover, however may occasionally use open areas (Sazima 1992). The ventral and dorsal  
20 colors, patterns and number of scales are highly variable within and among populations, and  
21 also among some geographical regions (Hoge *et al.* 1977; Campbell & Lamar 1989; Lema  
22 1994). The existence of some geographical structure in the morphology of *B. jararaca*  
23 prompted Salomão *et al.* (1997) to conclude that this taxon may represent a complex of  
24 several species.



1           *Bothrops insularis*, the golden lancehead, is restricted to Queimada Grande Island,  
2 about 30 km off the coast of São Paulo State (SP), southeastern Brazil. This species is more  
3 arboreal than mainland jararaca; its diet is predominately based on migrant passerine birds  
4 (Martins *et al.* 2001) and its venom has become more effective in killing bird prey (Cogo *et*  
5 *al.* 1993). This species was considered by Salomão *et al.* (1997) the sister taxon to *B. jararaca*  
6 but they noted that *B. insularis* may be placed within the *B. jararaca* species complex,  
7 rendering jararaca a paraphyletic taxon. The second insular species is the recently described  
8 *Bothrops alcatraz* (Marques *et al.* 2002), endemic to the Alcatrazes Island, also about 30 km  
9 off the coast of SP and more than 100 km north of Queimada Grande Island. *Bothrops*  
10 *alcatraz* is paedomorphic, has a smaller adult size and larger eyes than the continental *B.*  
11 *jararaca* and feeds primarily on ectothermic prey (centipedes and lizards) a characteristic of  
12 juvenile mainland vipers, and its venom is similar to that of juveniles of jararaca (Marques *et*  
13 *al.* 2002).

14           In spite of these intriguing features, the knowledge about the genetic diversity and the  
15 evolutionary history of *B. jararaca* and associated species is scarce. Additionally, although  
16 the Brazilian Atlantic Forest is considered one of the eight major biodiversity hotspots for  
17 conservation (Myers *et al.* 2000), the processes through which its striking diversity was  
18 formed are controversial, and the knowledge about patterns of endemism and endemic species  
19 phylogeography is poor in contrast to other areas (see Moritz *et al.* 2000). The aim of the  
20 present study was to evaluate the genetic variability of the mitochondrial cytochrome *b* gene  
21 in a large sample throughout most of the range of *B. jararaca* and the two insular species, to  
22 infer their genetic structure and evolutionary history and to contrast these findings to  
23 paleoclimatic processes reported for the Brazilian Atlantic Forest.

## 1 **Materials and methods**

### 2 *Population sampling and molecular methods*

3 A total of 159 specimens from 94 localities was sampled in the states of Rio Grande  
4 do Sul (RS), Santa Catarina (SC), and Paraná (PR) and the states of São Paulo (SP), Rio de  
5 Janeiro (RJ), Minas Gerais (MG), and Espírito Santo (ES), covering most of the species'  
6 range (Fig. 1, Appendix 1), as well as 12 individuals of two insular endemic species (seven *B.*  
7 *insularis* and five *B. alcatraz*) belonging to the *jararaca* complex (Salomão *et al.* 1997,  
8 Martins *et al.* 2001, Marques *et al.* 2002). DNA was extracted from scales, blood, liver or  
9 shed skin following published protocols specific for each tissue (Hillis *et al.* 1996; Hillel *et al.*  
10 1989; Bricker *et al.* 1996). Additionally DNA from formalin-fixed museum specimens was  
11 extracted using a modified protocol from Chatigny (2000).

12 A 726 bp region of the cytochrome *b* gene was amplified via PCR using the primers  
13 703Bot (Kocher *et al.* 1989) and MVZ (Moritz *et al.* 1992), both modified by Pook *et al.*  
14 (2000) for increased efficiency in snakes. Amplicons were purified with shrimp alkaline  
15 phosphatase and exonuclease I (Amersham Biosciences) and sequenced using the DYEnamic  
16 ET Dye Terminator Cycle Sequencing Kit (Amersham Biosciences), in a MegaBACE 1000  
17 automated sequencer (Amersham Biosciences) following the manufacturer's protocols.  
18 Chromatograms were checked with the Chromas software (Technelysium) and sequences  
19 were manually edited using BioEdit 6.0.7 (Hall, 1999).

20

### 21 *Sequence alignment and evolutionary models*

22 Sequences were aligned using the ClustalX 1.83 program (Thompson *et al.* 1997) and  
23 corrected by eye. The level of saturation was assessed for all codon positions considering the  
24 degree of deviation from isometric lines in scatterplots of transition and transversion  
25 substitutions against the total genetic distance (TrN) using the program DAMBE (Xia & Xie

1 2001). Possible saturation effects causing bias in the phylogenetic analyses were assessed by  
2 comparing the trees found considering the whole data, without the third codon position, and  
3 using transversions only. These trees were reconstructed using a maximum-likelihood  
4 approach (ML) with a heuristic TBR search option and a neighbor-joining (NJ) starting tree  
5 using the Jukes-Cantor model (JC) as implemented in PAUP\* 4.0b10 (Swofford 2001).

6 The model of evolution used for the phylogenetic reconstructions was estimated with  
7 the MODELTEST 3.06 program (Posada & Crandall 1998). This program uses a hierarchical  
8 likelihood-ratio test (hLRT) and minimum theoretical information criterion (AIC) to select the  
9 most likely model of sequence evolution. The application of both tests (hLRT and AIC) has  
10 been criticized since they usually select more complex models than necessary to reconstruct  
11 the correct phylogenetic topology, which increases the standard error (Nei & Kumar 2000).  
12 We tested the resulting models from both hLRT and AIC as well as a simpler model (JC) to  
13 assess the possible bias in phylogenetic reconstruction caused by the use of complex models.

#### 14 15 *Phylogenetic analyses*

16 To root the *B. jararaca* sequences, we have used *B. erythromelas* and *B. atrox* as  
17 outgroup species, based on Wüster *et al.* (2002) where *B. erythromelas* is one of the more  
18 closely related species and *B. atrox* is a relatively more distant species. Phylogenetic inference  
19 was carried out using neighbor-joining (NJ), maximum-likelihood (ML), maximum-  
20 parsimony (MP) and Bayesian Inference (BI) (see Holder & Lewis 2003 for a review). We  
21 inferred ML trees using PAUP\* with the heuristic search (TBR) option and a NJ starting tree;  
22 confidence was estimated by 1000 bootstrap replicates using the NNI heuristic search option.  
23 Three putatively more efficient approaches for ML reconstruction were also used: genetic  
24 algorithms implemented in the programs MetaPIGA 1.02 (Lemmon & Milinkovitch 2002)  
25 and Treefinder (Jobb *et al.* 2004), quartet-puzzling implemented in Tree-Puzzle 5.0 software

1 (Strimmer & von Haeseler 1996) and a fast hill-climbing algorithm that adjusts tree topology  
2 and branch lengths simultaneously, implemented in the program phyML (Guindon & Gascuel  
3 2003). For these three approaches statistical support was obtained by: 1,000 bootstrap  
4 replications (for Treefinder and phyML); percentage of cluster occurrence in 10,000 trees (for  
5 MetaPIGA); and percentage of how often the corresponding cluster was found among the  
6 intermediate trees in 100,000 puzzling steps (for Tree-puzzle).

7 BI was performed using Mr. Bayes v3.0b4 (Huelsenbeck & Ronquist 2001) software  
8 with 1,000,000 cycles for the MCMC algorithm using flat priors. MP was performed by  
9 heuristic search (TBR) with starting trees produced by 1,000 replications of random stepwise  
10 addition. To assess the MP statistical confidence, 1,000 bootstrap replicates were conducted  
11 using the same heuristic search, but with starting trees obtained from simple stepwise  
12 addition. NJ analysis, using the ML estimator of distance under the evolution models selected  
13 by MODELTEST, was evaluated with 1,000 bootstrap replications. Both MP and NJ analyses  
14 were performed in PAUP\*.

15 Divergence time between clades was estimated using the linearized tree method as  
16 implemented in LINTREE (Takezaki *et al.* 1995). To calibrate the molecular clock we used  
17 three different substitution rates ( $\mu$ ) reported previously for pitvipers: 0.47% and 1.32%  $\text{my}^{-1}$   
18 derived from the entire mtDNA reviewed by Zamundio & Greene (1997); 1.36% and 1.44%  
19  $\text{my}^{-1}$  estimated with the *Lachesis* data from Zamundio & Greene (1997) by Pook *et al.* (2000);  
20 and 0.66% and 0.76%  $\text{my}^{-1}$  estimated from South American *Porthidium* data (Wüster *et al.*  
21 2002).

22

### 23 *Definition of the population genetic structure*

24 Samples were grouped in populations according the municipal limits. As exact  
25 geographic location was not available for most of the samples, latitudinal and longitudinal

1 positioning was inferred using the geographical center of the town where the individuals were  
2 collected. The spatial analysis of molecular variance (SAMOVA, Dupanloup *et al.* 2002) was  
3 used to estimate the genetic structure of populations and possible barriers to gene flow to help  
4 to delimit groups of populations within the range of *B. jararaca* as needed for some analyses.  
5 This method is based on a simulated annealing approach to maximize the proportion of total  
6 genetic variance due to differences among groups of populations ( $F_{CT}$  index) and thus  
7 attempts to define the strongest structure of populations in genetic terms (Dupanloup *et al.*  
8 2002). We analyzed an extensive range (one to eighty) of population partitions in the total  
9 distribution to find the largest  $F_{CT}$  value, which was suggested by Dupanloup (2002) to be  
10 associated with the correct number of groups in simulation analysis. The genetic structure  
11 observed using the grouping definitions from SAMOVA was then contrasted to that obtained  
12 by grouping our samples following approximately the three Atlantic forest subdivisions using  
13 an analysis of molecular variance (AMOVA, Excoffier *et al.* 1992), estimated for all  
14 geographical groups in ARLEQUIN 2.0 (Schneider *et al.* 2000).

15

#### 16 *Population parameters*

17 DNASP 4.0 (Rozas *et al.* 2003) was used to estimate population diversity statistics  
18 such as nucleotide ( $\pi$ ) and haplotype diversity (Hd), Tajima's (Tajima, 1983) and Fu & Li's  
19 (Fu & Li 1993) neutrality tests and their statistical significance, F-statistics ( $F_{ST}$ ; Hudson, *et*  
20 *al.* 1992), number of migrants per generation (Nm, using  $F_{ST} = 1/(1+2Nm)$ , and mismatch  
21 distribution analyses (Rogers & Harpending, 1992). The spatial autocorrelation analysis was  
22 conducted with the AIDA software (Bertorelle & Barbujani, 1995) with 1000 replications and  
23 15 distance classes, each class containing approximately equal numbers of comparisons. This  
24 autocorrelation statistics compares DNA sequences at several spatial scales, using the  
25 individual haplotype as the unit of analysis (Barbujani *et al.* 1995).

1

## 2 *Network and Nested Clade Analyses*

3         Two kinds of haplotype networks were constructed: the median-joining network  
4 (MJN) (Bandelt *et al.* 1999) estimated with the Network 3.1.1.1 software (www.fluxus-  
5 engineering.com), and the parsimony network (with 0.95 probability limits) using the  
6 program TCS v1.0 (Clement *et al.* 2000) with Crandall's assumptions (Crandall *et al.* 1994)  
7 to resolve ambiguities. Nested clade analysis (NCA) was conducted using the GeoDis 2.0  
8 program (Posada *et al.* 2000) with 10000 (Monte Carlo) replications. The TCS haplotype  
9 network was edited and nested categories were assigned following the nested rules in  
10 Templeton *et al.* (1987), Templeton & Sing (1993) and Crandall (1996). Results were  
11 interpreted based on Templeton's key (Templeton 1998) using the key available at the website  
12 <http://darwin.uvigo.es/software/geodis.html>.

13

## 14 *Coalescent analyses*

15         Coalescent analyses were used for estimating divergence times and migration rates  
16 among groups of populations to evaluate the relative contributions of isolation and migration  
17 to the population structure in this species. We used the program MDIV (Nielsen & Wakeley  
18 2001) which uses a Markov Chain Monte Carlo method within a likelihood framework to  
19 estimate the posterior distributions of: theta ( $\theta = 2N_{ef}\mu$ ), the migration rate per generation ( $M$   
20  $= N_{ef}m$ ,  $m$  = migration rate), and divergence time ( $T = t/N_{ef}$ ,  $t$  = divergence time) (equations  
21 adjusted for mitochondrial data). The program also estimates the expected time to the most  
22 recent common ancestor ( $T_{MRCA}$ ) for all sequences in the sample. Five runs were performed  
23 with 5,000,000 cycles each for the Markov Chain and the burn-in time of 10% as  
24 recommended by the program manual.

1           Female effective population size ( $N_{ef}$ ) was estimated using  $N_{ef} = \theta / 2\mu$ . One  
2 generation time for *B. jararaca* was estimated using the data from Sazima (1992), that  
3 suggested jararacas attain adult size in their third or fourth year and they live approximately  
4 10-12 years (Sazima 1992). We estimated generation time as an average of the youngest  
5 reported age at maturity and the shortest reported life span minus one year as a compensation  
6 for probability of survival until old ages. This procedure resulted in a generation time of 5.5  
7 years for *B. jararaca*.

# 1 **Results**

## 2 *mtDNA sequence variation*

3           An alignment of 626 bp of cytochrome *b* was obtained for 171 individuals of the *B.*  
4 *jararaca* species complex and the two outgroups (*B. erythromelas* and *B. atrox*) (the  
5 sequences been submitted to GenBank, Accession AY865653 to AY865824). Sixty one  
6 variable sites (9.7%) were found among the ingroup taxa while 145 variable sites (23.2%)  
7 were found including the two outgroups. Forty-five haplotypes were found in the *B. jararaca*  
8 complex, 44 being present in *B. jararaca*, with a haplotype diversity (Hd) of 0.943 and a  
9 nucleotide diversity ( $\pi$ ) of 0.0207 (Table 1). The five individuals of *B. alcatraz* share a  
10 common haplotype, identical to the most frequent and widespread *B. jararaca* haplotype  
11 (haplotype code N01). On the other hand, two haplotypes were found in the seven *B.*  
12 *insularis*: one exclusive of *B. insularis* and present in a single individual (N27), and another  
13 found in the other six individuals and identical to that of mainland *B. jararaca* from São  
14 Bernardo do Campo, SP (N26).

15

## 16 *Phylogenetic analyses*

17           Although there is a signal for substitution saturation evidenced by a deviation from the  
18 isometric line in plots of substitution for transitions at the third codon position, we used the  
19 full dataset to estimate the haplotype phylogenies below, as this signal is weak and only  
20 apparent in the comparisons involving the outgroups (Fig. 2) and the trees constructed without  
21 the third codon position or with transversions only resulted in a broadly unresolved ingroup  
22 topology (data not shown). Besides, the trees estimated with ingroup sequences only resulted  
23 in topologies very similar to those of found with the outgroups included (data not shown).

24           The HKY+ $\Gamma$  substitution model was selected by the hLRT in MODELTEST with a  
25 gamma shape parameter ( $\alpha$ ) of 0.1597. Alternatively, the TrN+I model was selected by AIC



1 with a proportion of invariable sites of 0.6937. The main difference observed in the  
2 respective tree topologies is the position of the root. In several analyses using the HKY+  $\Gamma$   
3 model (ML, Tree-puzzle, NJ, and BI, data not shown), the outgroup position is not consistent  
4 and each method places the root on a different branch. On the other hand, when the TrN+I  
5 model is used with all methods, phyML and Treefinder with the HKY+ $\Gamma$  model and all  
6 methods with the simpler JC model the root is placed within the same branch. The  
7 inconsistent rooting might be due to a large increase in branch lengths between the outgroup  
8 and the ingroup when the gamma correction was applied (JC mean distance 13.6%, HKY+ $\Gamma$   
9 mean distance 31.2%; see Huelsenbeck *et al.* 2002 for problems of using distant outgroups for  
10 rooting trees). Therefore, we used TN+I for all analyses but those performed with MetaPiga,  
11 in which we used HKY because the TN+I model is not implemented.

12 All phylogenetic trees showed a very similar topology, the main difference being the  
13 relative positions of some subclades (see below) with a few differences in the statistical  
14 support values with MetaPiga, Tree-puzzle, BI and NJ presenting higher values, while ML,  
15 phyML, Treefinder and the majority rule MP consensus tree show lower values (Fig. 3). The  
16 main feature of these trees is the presence of two divergent (distance of 3.3% calculated using  
17 TrN) clades of haplotypes. One group, that we call the southern clade (Sc), includes 14  
18 haplotypes (found in 76 individuals) mainly from the southern part of the jararaca distribution  
19 (PR, SC, and RS states) and the other, called the northern clade (Nc), includes 31 haplotypes  
20 (found in 95 individuals) mainly from the southeastern Brazilian region (SP, MG, RJ and ES  
21 states). Statistical support values for these clades vary: the Sc clade receives high support with  
22 all analyses, while the Nc presents values ranging from 50% to 85%. The two clades are also  
23 geographically independent; only two individuals don't occur in their respective geographic  
24 clade, bj164 from Telêmaco Borba, PR (N04) and bj144 from Juquitiba, SP (S12, Fig. 3).

1           Within these two major clades there are some subclades that are well supported by  
2 most of the analyses. In the southern clade two subclades (Sc1 and Sc2, Fig. 3) show high  
3 statistical support in all analyses, but without clear geographic structure. Within the Nc, six  
4 subclades could be recognized in all analyses (Nc1, Nc2, Nc3, Nc4a, Nc4b and Nc5; Fig. 3)  
5 although some received low support in a few analyses. Most of the subclades show limited  
6 geographic structure with some overlap. The haplotypes of Nc1 are all from the northeastern  
7 distribution of the area considered (ES state) while those of Nc2 are from the Northern coast  
8 of RJ state. In Nc3 individuals of Southern MG state occur close to samples from inland RJ  
9 state (see Fig. 3 for support values).

10           The seven individuals (haplotypes N26 and N27) of *B. insularis* from Queimada  
11 Grande Island and two mainland individuals from SP state build up the strongly supported  
12 Nc4a group. This subclade groups together with Nc4b, another strongly supported clade  
13 consisting of specimens from inland SP and samples of areas near the city of São Paulo. In the  
14 sixth northern subclade, individuals of the central and western areas of MG are placed in Nc5.  
15 Ncmc comprises a large clade of haplotypes with a lower support including the only  
16 haplotype found in *B. alcatraz* (haplotype N01, shared with individuals from SP and RJ  
17 states).

18           The relationship among the subclades within the Nc and the root position of this clade  
19 vary considerably across the trees obtained by different methods with very low statistical  
20 support in most of them (root positions were not statistically different using Shimodaira-  
21 Hasegawa test).

22

### 23 *Grouping the populations*

24           The SAMOVA applied to two groups of populations (as implied by the results above)  
25 suggests a geographic barrier approximately between the SP and PR states, in the vicinity of

1 the Paranapanema river (Fig. 1). This putative barrier divides the *B. jararaca* populations in a  
2 Southern (SG) and a Northern (NG) group, exactly as we found in our phylogenetic analyses.  
3 However, the maximum  $F_{CT}$  value was obtained when 80 populations were used (results not  
4 shown). This pattern could be due to a large genetic variation within several of the  
5 populations or may be caused by our sampling scheme of few individuals in most of the  
6 municipalities, here defined as equivalent to the “population” (see Material and Methods).  
7 With these features, when we increase the number of groups, the number of populations  
8 within the groups becomes smaller, the  $F_{SC}$  decreases while the  $F_{CT}$  increases due to the  
9 relationship  $(1-F_{ST}) = (1-F_{SC})(1-F_{CT})$  if  $F_{ST}$  remains almost unaltered (see Dupanloup *et al.*  
10 2002). As a result of this relationship, with present data set it is not possible to associate the  
11 largest  $F_{CT}$  to the best number of groups. Therefore, in an attempt to avoid an analytical bias  
12 in definition of populations and based on the concordance among our phylogenetic inference,  
13 all further analyses were performed considering only the above two groups of populations.

14

### 15 *Statistical and demographic parameters*

16 Several statistical parameters were estimated for the two groups of jararaca identified  
17 herein (table 1). The NG is more diverse than the SG defined by more haplotypes and higher  
18 nucleotide diversity. Two neutrality tests (Fu and Li’s D and F) were significantly negative  
19 for the SG, suggesting a demographic process such as population contraction followed by  
20 expansion or some kind of selection process on mtDNA, although Tajima’s D was negative  
21 but not significant. For the NG, the respective values were not significant and were all  
22 positive except for Tajima’s D test. Considering *B. jararaca* as a whole, all statistics were  
23 positive but not significant.

24 The mismatch distribution considering all individuals or the two groups separately  
25 showed multimodal distributions (Fig. 4) that agree with the non-significant results of the

1 neutrality tests except for the SG group. Unimodal distributions for SG emerge only when the  
2 respective subclades are regarded separately (e.g. using Sc1 and Sc2, not shown).

3 We have found a large  $F_{ST}$  (0.711) between the two groups of populations (SG and  
4 NG) and consequently a low number of migrants per generation was estimated (0.2).  
5 Likewise, the AMOVA test detected significant structuring between SG and NG: 69.98% of  
6 the genetic variation is found between the two groups of populations while only 16.22% are  
7 found among populations within groups, and the remaining 13.80% was found within  
8 populations.

9 The correlograms (Fig. 5) produced by the spatial autocorrelation analysis considering  
10 all sequences and the population groups showed the same pattern, in which the  $I$  coefficient  
11 decreased from positively significant to negatively significant with the increase of  
12 geographical distance, describing a cline. Barbujani and Bertorelle (1996) listed three possible  
13 causes for a clinal pattern: a selective gradient, demic diffusion and range expansion  
14 accompanied by founder effects and followed by gene flow.

15

## 16 *Networks and NCA*

17 The median-joining (Fig. 6) and statistical parsimony networks (not shown) were very  
18 similar. Median-joining network showed 14 mutational steps between the two major clades  
19 (Sc and Nc) thus corroborating the strong differentiation between them found by phylogenetic  
20 methods. However, some subclades of each of these clades differ between the networks and  
21 the phylogenetic analyses. The most striking difference is the relationship of *B. insularis* and  
22 the São Bernardo do Campo (SP) haplotypes (N26, N27 and N31), occurring closest to N07  
23 and N01 (Ubatuba-SP, and the most widespread haplotype from Nc, respectively) in the  
24 networks, and not within the Nc4 subclade as suggested by all phylogenetic analyses. As  
25 previously indicated by the phylogenetic trees, individuals bj164 (N04) and bj144 (S12)

1 appear as possible migrants, because although belonging to SG and NG populations, their  
2 haplotypes belong to Nc and Sc clusters, respectively (Fig. 6).  
3 In the NCA, most of the lower-level clades were not significant in the exact contingency tests  
4 ( $P > 0.05$ ) that evaluate the geographical associations between haplotype distribution and  
5 geographic location. A few higher-level clades were significant ( $P < 0.01$ ), and their genetic  
6 signature, as inferred from Templeton's inference key is shown in table 2. Considering the  
7 whole distribution of *B. jararaca* populations the contingency test showed a highly significant  
8 association ( $P < 0.0001$ ) possibly produced by a past fragmentation event. Northern clade was  
9 inferred to have suffered a contiguous range expansion, however within this clade the results  
10 for Nc5 and Nc1+Nc2 suggest, that the null hypothesis of no geographical association cannot  
11 be rejected and that the sampling pattern did not allow to discriminate between isolation by  
12 distance and long distance dispersal. On the other hand, the diversity of Sc and Sc1 may be  
13 explained by restricted gene flow with isolation by distance.

14

### 15 *Coalescent analyses and divergence times*

16 The value for  $\theta$  estimated by the likelihood coalescent approach was 9.416, similar to  
17 Waterson's  $\theta$  of 11.196 (estimated with DNASP). Using the extreme values reported for the  
18 mutation rate in pitviper species (0.47% and 1.44%  $\text{my}^{-1}$ ) we get a historical  $N_{\text{ef}}$  of 290,948 to  
19 94,962 individuals. The migration rate was estimated as  $M = 0.22$ , very similar to that  
20 calculated from  $F_{\text{ST}}$  ( $Nm = 0.21$ ).

21 The divergence time between the two major groups estimated with MDIV was 1.9  
22 units, which varies from about 3.04 to 0.99 Mya depending on which of the above mentioned  
23 substitution rate is used. Accordingly, the  $T_{\text{MRCA}}$  was estimated at 2.5 units corresponding to  
24 4.00 to 1.30 Mya. The molecular clock test implemented in LINTREE proves three sequences  
25 to be significantly different from the rest, showing lower rates. Excluding these sequences the

1 divergence time of Nc and Sc is estimated about 1.8 Mya (fig 7). Therefore, both methods  
2 suggest a separation between a southern and a northern population of *B. jararaca* by the end  
3 of Pliocene or in the beginning of Pleistocene (3.6 - 1.0 Mya). The diversification of the  
4 clades into subclades began more recently about 0.8 Mya. It is interesting to note that most of  
5 the subclades of Nc seem to have diverged almost simultaneously, about 0.5 Mya and  
6 diversification within subclades started between 0.3 to 0.13 Mya.

7

## 1 **Discussion**

2           The genetic diversity found in the *B. jararaca* complex is relatively high when  
3 compared to those observed in other *Bothrops* species. Puerto *et al.* (2001) working with  
4 cytochrome *b* and ND 4 sequences of *B. leucurus* (1401 bp) found a low genetic diversity  
5 both within this species (p-distances ranging between 0.07% and 0.087%) and between *B.*  
6 *leucurus* and *B. atrox* (p-distances ranging from 2.07% to 2.45%). Working with the *B. atrox*  
7 complex, Wüster *et al.* (1999) using cytochrome *b* sequences (580 bp) found p-distance  
8 ranging from 0.4% to 4.8% (average distances not reported). The *B. atrox* complex has a  
9 wider distribution than the *B. jararaca* complex occupies a broader range of habitats and  
10 includes seven species. Despite these facts *B. jararaca* appears to be more diverse than the *B.*  
11 *atrox* complex.

12

### 13 *Phylogeographic patterns*

14           The phylogenetic analyses and network methods using cytochrome *b* sequences  
15 identified two highly distinct phylogroups within *B. jararaca*, which diverged 3.6 - 1.0 Mya.  
16 These clades are also consistent in our population analyses which shows only two individuals  
17 positioned in different populations in relation to their clades. One of these populations is  
18 represented by individuals from the São Paulo state northward and the other by the  
19 individuals from Paraná state southward (Fig. 1). The coalescent analysis and the  $F_{ST}$  value  
20 suggest a scenario of high isolation between these two groups. These two groups of  
21 populations are parapatric in the vicinity of the Paranapanema River, a tributary of Paraná  
22 River. However it is not clear if this river could be the barrier that caused the differentiation  
23 of these two groups. Although the present drainage of the Paraná River system was probably  
24 established in the Mid-Tertiary (Potter 1998) and underwent several fluctuations in water  
25 level and flow which could be compatible with our estimated divergence times, rivers of this

1 extension do not seem to be an effective dispersal barrier for *B. jararaca*. (Other rivers of  
2 similar size exist along the distribution of the species that do not seem to have affected the  
3 dispersal of the species.)

4 Hoge *et al.* (1977) describe an interesting variation in the number of ventral scales in  
5 *B. jararaca*. They analyzed 522 specimens from most of the distribution of the species and  
6 distinguished two overlapping groups, one with fewer scales in the southern parts of the  
7 distribution (SC and PR), and the other with a larger number of scales in the northern parts of  
8 the range (RJ, MG and ES). Specimens from SP state were morphologically intermediate  
9 between the two patterns. Hoge *et al.* (1977) considered average annual temperature to be  
10 functionally linked to the observed variation and referred to Fox (1948) and Fox & Fox  
11 (1961) who correlated temperature variation and somite formation in *Thamnophis elegans*  
12 populations. Considering the results of the present study the morphological distinction  
13 between southern and northern populations found by Hoge *et al.* (1977) may be better  
14 explained by a past fragmentation event of the species range into two refugial populations.  
15 The deep mtDNA lineage divergence found in *B. jararaca* suggests that, for conservation  
16 purposes, this species should be provisionally divided into two separate geographical units  
17 because 70% of its variability is found between the two groups. However it has been  
18 presumed by Sazima (1992) that females of *B. jararaca* show a sedentary tendency while  
19 males have a wandering pattern, so this phylogeographic pattern may be mainly matrilineal.  
20 Further studies including bi-parental markers and additional traits are necessary to better  
21 understand which management and taxonomic status should be assigned to this two major  
22 population groups.

23 Phylogeographical patterns within SG are conflicting. The results of the neutrality test  
24 (Table 1) support the scenario of a relatively large expansion, but the multimodal mismatch  
25 distribution (Fig. 5) apparently conflicts with this model, since a population expansion is



1 usually associated to unimodal pattern. However, a model of moderate bottleneck followed by  
2 a large size expansion could accommodate these conflicting results, since if two genetically  
3 distinct founders remained in the population, a ragged distribution could arise (Rogers &  
4 Harpending 1992). As emphasized by Mahoney (2004), mismatch distribution graphics may  
5 be considered much more for hypothesis formulation than as a statistical test of demographic  
6 history. This scenario for SG is also supported by the results of the autocorrelation analyses,  
7 which showed a cline (Fig. 5), that could suggest the occurrence of founder effects  
8 accompanied by range expansion with gene flow.

9 On the other hand, NG shows a more complex pattern, including a signal of range  
10 expansion (Table 2, Fig. 5), absence of both strong bottleneck and size expansion (Table 2,  
11 Fig. 4), as well as some geographical structuring (Fig. 3). Therefore, a possible scenario for  
12 this group of populations involves the absence of any strong bottleneck in its inception but  
13 with range expansion followed by regional size expansion with moderate gene flow.

14

### 15 *Diversification patterns and paleoecology in the Brazilian Atlantic forest*

16 There are several major hypotheses trying to explain the diversification of the South  
17 American fauna (see Moritz *et al.* 2000 for a review). The refugia model is one of the most  
18 widely debated one and suggests a pivotal role for Pleistocene climatic changes in promoting  
19 isolation and speciation (Haffer 1969, Müller 1973). Some molecular studies have found a  
20 divergence time correspondent to climatic changes throughout the Pleistocene (e.g. Ribas &  
21 Miyaki 2004). However, contrarily to the classical late Pleistocene Refuges hypothesis, most  
22 molecular studies in different areas of South America estimated older times for  
23 species/lineage divergence predating the Pleistocene (e.g. Cortés-Ortiz *et al.* 2003, Lara &  
24 Patton 2000, see Moritz *et al.* 2000). Thus the Pliocene seems to have been a period of active

1 speciation for many organisms in South America, possibly due to changes in the humidity  
2 levels, which ultimately promoted changes in the phytophysiognomic domains.

3 For the Brazilian Atlantic Forest there are few studies to test this hypothesis using data  
4 on patterns of divergence. Nevertheless, Lara & Patton (2000) analyzing the results of  
5 Vasconcelos *et al.* (1992) tried to explain the divergence of three major clades of spiny rats of  
6 the genus *Triomys* dated between 1.6 and 7.4 million years ago (Mya) based on the uplift of  
7 the coastal mountains and the interruption of precipitation in Southeastern Brazil by the early  
8 Pliocene at about 5.6 Mya which coincides with the transition from tropical humid to semi-  
9 arid or arid conditions. This uniform stable dry climate persisted until the Middle to Upper  
10 Pliocene when a gradual increase in humidity happened. They concluded the deep divergence  
11 seen in *Triomys* to be older than the late Pleistocene and to be more likely caused by events  
12 that dating back to Miocene/Pliocene times (Lara & Patton 2000).

13 *B. jararaca* is a forest dweller (Sazima 1992) and is likely that such a fragmentation,  
14 in drier periods, could have divided a single widespread group into several isolated  
15 populations. This scenario with the assumption of restricted gene flow could have persisted  
16 until the establishment of more humid climatic conditions in the Early Pleistocene. The results  
17 of the present study suggest that the divergence of the two lineages of *B. jararaca* may be  
18 associated with an older fragmentation event in the Brazilian Atlantic Forest during the  
19 Pliocene similarly to the findings reported by Lara & Patton (2000). On the other hand, the  
20 initial diversification time estimated for the subclades ranges from 200,000 to 130,000 years  
21 ago suggesting that the genetic and geographic variability of subpopulations of *B. jararaca*  
22 may have been shaped by late Pleistocene climatic oscillations.

23 This model does not fit the clinal pattern detected by autocorrelation analyses with the  
24 whole dataset (Fig. 5). A cline is defined by relationships across geographical distances and  
25 genetic divergence in a gradient of correlation without fragmentation. . However, one of the

1 three principal causes promoting a clinal pattern comprises fragmentation with a weak and  
2 differential bottleneck on two populations followed by a moderated range expansion and  
3 subsequent restricted gene flow (Barbujani and Bertorelle 1996) thus supporting the  
4 hypothesis suggested herein.

5

## 6 **The origin and status of the insular jararacas and the validity of *Bothrops jararaca***

7

8 According to Marques *et al.* (2002) the two insular species may have been originated  
9 from populations of a *B. jararaca*-like ancestor from the eastern coast of Brazil that may have  
10 been isolated on islands during one of the last sea level oscillations in the late Pleistocene.  
11 Our results corroborate the idea of a very recent isolation of *B. insularis* and *B. alcatraz* but,  
12 based on the haplotype network; it is evident that these two species derived from *B. jararaca*  
13 itself and not from another ancestral species. Although with the present data it is not possible  
14 to test whether both species originated from one or from two different source populations, the  
15 results of the present study suggest an independent origin. At first, the two haplotypes from *B.*  
16 *insularis* (N27 and N26, the latter shared with mainland jararaca) belong to a very divergent  
17 subclade (Nc4a, fig. 03) with a very limited distribution being restricted to a single sampling  
18 site (São Bernardo do Campo, SP). The single haplotype from *B. alcatraz* is located within a  
19 distant subclade (N31) although this one is identical with the most frequent and widely  
20 distributed mainland haplotype (N01). The shared haplotypes from both species occur in  
21 mainland sampling sites very near Queimada Grande and Alcatraz islands. The low genetic  
22 diversity found within each island suggests a possible founder effect for the origin of these  
23 insular species. Additional data are needed to test this hypothesis.

24 Does the phylogenetic position of *B. insularis* and *B. alcatraz* mtDNA haplotypes  
25 inside *B. jararaca* populations represent a problem for the delimitation or validity of these

1 species, as suggested by Salomão *et al.* (1997)? In fact, the gene genealogy as described  
2 herein is very likely when differentiation involves a small population isolated from a larger  
3 ancestral one. Actually a large number of such “paraphyletic” species phylogenies based on  
4 mtDNA are known (Avice 2000). Johnson *et al.* (2000) discussing island biogeography  
5 models demonstrated that phylogenies of island and mainland populations showing paraphyly  
6 of mainland alleles occur when the mainland population is very large and exhibits geographic  
7 structure and/or when a short time has passed since colonization. Rapid speciation events  
8 were also recognized by Moritz (1994) as a restriction to the definition of Evolutionary  
9 Significant Units based on the reciprocal monophyly concept, but his argument is that it does  
10 not affect conservation priorities because these taxa are frequently recognized as different  
11 species based on other biological criteria. Therefore, the paraphyly of the mtDNA alleles and  
12 the recent peripatric model of differentiation or speciation of the two island jararacas as  
13 suggested herein should not influence the conservation status of any such population. Many  
14 striking biological features observed in *B. insularis* and *B. alcatraz* (Marques *et al.* 2002) are  
15 not found in mainland jararacas, thus supporting their consideration as valid taxa and distinct  
16 evolutionary units for conservation.

## 1           **Acknowledgements**

2           We thank F.L. Franco, W. Fernandes and O.A.V. Marques (Instituto Butantan), A.  
3 Melgarejo (Instituto Vital Brazil), R. Maciel and G.A. Cota (FUNED), M. DiBernardo and  
4 G.F. Pontes (PUCRS), M. Leitão-de-Araújo (FZB-RS), P.J. Demeda (UCS) for collecting  
5 snakes. N.J.R. Fagundes, E. Eizirik, P. Müller, A. M. Solé-Cava, F. R Santos, K. Zamudio  
6 and T. Lema for critical reading the manuscript and F.S.L. Vianna for laboratory assistance.  
7 K. Zamudio, M. Martins and O.A.V. Marques for providing useful comments and collecting  
8 support (FAPESP, 1995/09642-5). F.G.G. and M.M. were supported by a fellowship from  
9 CAPES, Brazil and DAAD, Germany respectively. Funding was provided by CNPq and  
10 FAPERGS, Brazil, to S.L.B.

## References

- 1  
2
- 3       Avice LC (2000) *Phylogeography: The history and formation of species*. Harvard  
4 University press, Cambridge.
- 5       Bandelt HJ, Forster P, Röhl A (1999) Median-joining networks for inferring  
6 intraspecific phylogenies. *Molecular Biology and Evolution*, **16**, 37-48.
- 7       Barbujani G, Bertorelle G (1996) AIDA: Geographical patterns of DNA diversity  
8 investigated by autocorrelation statistics. In: *Molecular Biology and Human Diversity* (ed.  
9 Boyce AJ, Mascie-Taylor N), pp. 93-111. Cambridge University Press, Cambridge.
- 10       Barbujani G, Bertorelle G, Capitán G, Scozzari R (1995) Geographical Structuring in  
11 the mtDNA of Italians. *Evolution*, **92**, 9171-9175.
- 12       Bertorelle G, Barbujani G (1995) Analysis of DNA diversity by spatial  
13 autocorrelation. *Genetics*, **140**, 811-819.
- 14       Bricker J, Bushar LM, Reinert HK, Gelbert L (1996) Purification of high quality DNA  
15 from shed skin. *Herpetological Review*, **27**, 133-134.
- 16       Campbell JA, Lamar W (1989) *The Venomous Reptiles of Latin America*. Cornell  
17 University Press, Ithaca.
- 18       Chatigny ME (2000) The extraction of DNA from formalin-fixed, ethanol-preserved  
19 reptile and amphibian tissues. *Herpetological Review*, **31**, 86-87.
- 20       Clement M, Posada D, Crandall KA (2000) TCS: a computer program to estimate  
21 gene genealogies. *Molecular Ecology*, **9**, 1687-1659.
- 22       Clissa PB (2002) *Caracterização do efeito da jararagina sobre a produção e*  
23 *liberação de citocinas pró-inflamatórias em modelo murino*. PhD thesis, University of São  
24 Paulo.
- 25       Cogo JC, Prado-Franceschi JP, Cruz-Hofling MA, Corrado AP, Rodrigues-Simoni  
26 MA (1993) Effect of *Bothrops insularis* venom on the mouse and chick nerve-muscle  
27 preparation. *Toxicon*, **31**, 1237-1247.
- 28       Cortés-Ortiz L, Bermingham E, Rico C, *et al.* (2003) Molecular systematics and  
29 biogeography of the Neotropical monkey genus, *Alouatta*. *Molecular Phylogenetics and*  
30 *Evolution*, **26**, 64-81
- 31       Crandall KA, Templeton AR, Sing CF (1994) Intraspecific Phylogenetics: problems  
32 and solutions. In: *Models in phylogeny reconstruction* (ed. Scotland RW, Siebert DJ,  
33 Williams DM), pp. 273-297. Clarendon Press, Oxford.
- 34       Crandall KA (1996) Multiple Interspecies Transmissions of Human and Simian T-  
35 Cell Leukemia/Lymphoma Virus Type I Sequences. *Molecular Biology and Evolution*, **13**,  
36 115-131.
- 37       Dupanloup I, Schneider S, Excoffier L (2002) A simulated annealing approach to  
38 define the genetic structure of populations. *Molecular Ecology*, **11**, 2571-2581.
- 39       Excoffier L, Smouse PE, Quattro J (1992) Analysis of molecular variance inferred  
40 from metric distances among DNA haplotypes: application to human mitochondrial DNA  
41 data. *Genetics*, **131**, 479-491.
- 42       Fonseca F (1949) *Animais Peçonhentos*. Instituto Butantan, São Paulo.

- 1 Fox W (1948) Effect of temperature on development of scutellation in the Garter  
2 Snake, *Thamnophis elegans atratus*. *Copeia*, **4**, 252-262.
- 3 Fox W, Fox MH (1961) Morphological effects of low temperatures during the  
4 embryonic development of the Garter Snake, *Thamnophis elegans*. *Zoologica*, **46**, 57-71.
- 5 Fu YX, Li WH (1993) Statistical tests of neutrality of mutations. *Genetics*, **133**, 693-  
6 709.
- 7 Guindon S, Gascuel O (2003) A simple, fast, and accurate algorithm to estimate large  
8 phylogenies by maximum likelihood. *Systematic Biology*, **52**, 696-704.
- 9 Giraud AR (2001) *Serpientes de la Selva Paranaense y del Chaco Húmedo*. Editora  
10 L.O.L.A, Buenos Aires.
- 11 Haffer J (1969) Speciation in Amazonian forest birds. *Science*, **165**, 131-137.
- 12 Hall TA (1999) BioEdit: a user-friendly biological sequence alignment editor and  
13 analysis program for Windows 95/98/NT. *Nucleic Acids Symposium Series*, **41**, 95-98.
- 14 Hillel J (1989) DNA fingerprinting of poultry. *Animal Genetics*, **20**, 25-35.
- 15 Hillis DM, Mable BK, Moritz C (1996) Applications of molecular systematics. In:  
16 *Molecular Systematics* (eds. Hillis DM, Moritz C Mable BK), pp. 515-544. Sinauer. Ass. Inc,  
17 Sunderland, MA.
- 18 Hoge AR, Belluomini HE, Fernandes W (1977) Variação do número de placas  
19 ventrais de *Bothrops jararaca* em função dos climas (Viperidae, Crotalinae). *Memórias do*  
20 *Instituto Butantan*, **40/41**, 11-17.
- 21 Hoge AR, Romano-Hoge SARWL (1981) Poisonous snakes of the world. Part 1:  
22 Checklist of the pit vipers, Viperioidea, Viperidae, Crotalinae. *Memórias do Instituto*  
23 *Butantan*, **42/43**, 179-309.
- 24 Holder M, Lewis PO (2003) Phylogeny estimation: traditional and Bayesian  
25 approaches. *Nature Reviews Genetics*, **4**, 275-284.
- 26 Hudson RR, Slatkin M, Maddison WP (1992) Estimation of levels of gene flow from  
27 DNA sequence data. *Genetics*, **132**, 583-589.
- 28 Huelsenbeck JP, Bollback JP, Levine AM (2002) Inferring the root of a phylogenetic  
29 tree. *Systematic Biology* **51**(1), 32-43.
- 30 Huelsenbeck JP, Ronquist F (2001) MRBAYES: Bayesian inference of phylogeny.  
31 *Bioinformatics*, **17**, 754-755.
- 32 Jobb G, von Haeseler A, Strimmer K (2004) TREEFINDER: A powerful graphical  
33 analysis environment for molecular phylogenetics. *BMC Evolutionary Biology*, **4**, 18.
- 34 Johnson KP, Adler FR, Cherry JL (2000) Genetic and phylogenetic consequences of  
35 island biogeography. *Evolution*, **54**, 387-396.
- 36 Kocher TD, Thomas WK, Meyer A, *et al.* (1989) Dynamics of mitochondrial DNA  
37 evolution in animals: Amplification and sequencing with conserved primers. *Proceedings of*  
38 *the National of the Academy of Sciences of the USA*, **86**, 6196-6200.
- 39 Lara MC, Patton JL (2000) Evolutionary diversification of spiny rats (genus  
40 *Trinomys*, Rodentia: Echimyidae) in the Atlantic Forest of Brazil. *Zoological Journal of the*  
41 *Linnean Society*, **130**, 661-686.

- 1 Lema, T (1994) Lista comentada dos répteis ocorrentes no Rio Grande do Sul.  
2 *Comunicações do Museu de Ciências e Tecnologia da PUCRS, Série Zoologia*, **7**, 41-150.
- 3 Lemmon AR, Milinkovitch MC (2002) The Metapopulation genetic algorithm: An  
4 efficient solution for the problem of large phylogeny estimation. *Proceedings of the National*  
5 *Academy of Science of the USA*, **99**, 10516-10521.
- 6 Mahoney MJ (2004) Molecular systematics and phylogeography of the *Plethodon*  
7 *elongatus* species group: combining phylogenetic and population genetic methods to  
8 investigate species history. *Molecular Ecology*, **13**, 149-166.
- 9 Marques OAV, Martins M, Sazima I (2002) A new insular species of pitviper from  
10 Brazil, with comments on evolutionary biology and conservation of the *Bothrops jararaca*  
11 group (Serpentes, Viperidae). *Herpetologica*, **58**, 303-312.
- 12 Martin L, Mörner NA, Flexor JM, Sugui K (1986) Fundamentos e reconstrução de  
13 antigos níveis marinhos do quaternário. *Boletim do Instituto de Geociências, Publicação*  
14 *Especial*, **4**, 1-161.
- 15 Martins M, Araujo MS, Sawaya RJ, Nunes R (2001) Diversity and evolution of  
16 macrohabitat use, body size and morphology in a monophyletic group of Neotropical pitviper  
17 (*Bothrops*). *Journal of Zoology*, **254**, 529-538.
- 18 Moritz C (1994) Defining 'Evolutionarily Significant Units' for conservation. *Trends*  
19 *in Ecology and Evolution*, **9**, 373-375.
- 20 Moritz C, Patton JL, Schneider CJ, Smith TB (2000) Diversification of rainforest  
21 faunas: an integrated molecular approach. *Annual Review of Ecology and Systematics*, **31**,  
22 533-563.
- 23 Moritz C, Schneider CJ, Wake DB (1992) Evolutionary relationships within the  
24 *Ensatina eschscholtzii* complex confirm the ring species interpretation. *Systematics Biology*,  
25 **41**, 273-291.
- 26 Müller P (1973) *The dispersal centres of terrestrial vertebrates in the Neotropical*  
27 *realm*. Dr. W. Junk B.V. Publishers, The Hague.
- 28 Myers N, Mittermeier RA, Mittermeier CG, Fonseca GAB, Kent J (2000)  
29 Biodiversity hotspots for conservation priorities. *Nature*, **403**, 853-858.
- 30 Nei M, Kumar S (2000) *Molecular Evolution and Phylogenetics*. Oxford University  
31 Press, New York.
- 32 Nielsen R, Wakeley J (2001) Distinguishing migration from isolation: A Markov  
33 Chain Monte Carlo approach. *Genetics*, **158**, 885-896.
- 34 Pook CE, Wüster W, Thorpe RS (2000) Historical biogeography of the western  
35 rattlesnake (Serpentes: Viperidae: *Crotalus viridis*), inferred from mitochondrial DNA  
36 sequence information. *Molecular Phylogenetics and Evolution*, **15**, 269-282.
- 37 Posada D, Crandall KA (1998) Modeltest: Testing the model of DNA substitution.  
38 *Bioinformatics Applications Note*, **14**, 817-818.
- 39 Posada D, Crandall KA, Templeton AR (2000) GeoDis: a program for the cladistic  
40 nested analysis of the geographical distribution of genetic haplotypes. *Molecular Ecology*, **9**,  
41 487-488.
- 42 Potter PE (1998) The Mesozoic and Cenozoic paleodrainage of South America: a  
43 natural history. *Journal of South American Earth Science*, **10**, 331-344.



- 1 Puerto G, Salomão MG, Theakston DG, *et al.* (2001) Combining mitochondrial DNA  
2 sequences and morphological data to infer species boundaries: phylogeography of  
3 lanceheaded pitvipers in the Brazilian Atlantic forest, and the status of *Bothrops pradoi*  
4 (Squamata: Serpentes: Viperidae). *Journal of Evolutionary Biology*, **14**, 527-538.
- 5 Ribas CC, Miyaki C (2004) Molecular systematics in *Aratinga* parakeets: species  
6 limits and historical biogeography in the 'solstitialis' group, and the systematic position of  
7 *Nandayus nenday*. *Molecular Phylogenetics and Evolution*, **30**, 663-675.
- 8 Ribeiro LA, Jorge MT (1990) Epidemiologia e quadros clínicos dos acidentados por  
9 serpentes *Bothrops jararaca* adultas e filhotes. *Revista do Instituto de Medicina Tropical de*  
10 *São Paulo*, **32**, 436-442.
- 11 Rogers AR, Harpending HC (1992) Population growth makes waves in the  
12 distribution of pairwise genetic differences. *Molecular Biology and Evolution*, **9**, 552-569.
- 13 Rozas J, Sánchez-DelBarrio JC, Messeguer X, Rozas R (2003) DnaSP, DNA  
14 polymorphism analyses by the coalescent and other methods. *Bioinformatics*, **19**, 2496-2497.
- 15 Salomão MG, Wüster W, Thorpe RS, Touzet JM, BBBSP (1997) DNA evolution of  
16 South American pitvipers of the genus *Bothrops* (Reptilia: Serpentes: Viperidae). In:  
17 *Venomous snakes: ecology, evolution and snakebit* (eds Thorpe RS, Wüster W, Malhotra, A),  
18 pp 89-98. Oxford University Press, New York.
- 19 Sazima I (1992) Natural history of the jararaca pitviper, *Bothrops jararaca*, in  
20 southeastern Brazil. In: *Biology of the Pitvipers* (eds Campbell JA, Brodie ED Jr), pp. 199-  
21 216. Selva Press, Tyler, Texas.
- 22 Schneider S, Roessli D, Excoffier L (2000) *Arlequin, A software for population*  
23 *genetic data analysis*, Version 2.0. University of Geneva, Geneva.
- 24 Strimmer K, von Haeseler A (1996) Quartet puzzling: A quartet maximum likelihood  
25 method for reconstructing tree topologies. *Molecular Biology and Evolution*, **13**, 964-969.
- 26 Swofford DL (2002) *PAUP\*. Phylogenetic Analysis Using Parsimony (\*And Other*  
27 *Methods)*, Version 4. Sinauer Associates, Sunderland, MA.
- 28 Tajima, F (1983). Evolutionary relationship of DNA sequences in finite populations.  
29 *Genetic*, **105**, 437-460.
- 30 Takezaki N, Rzhetsky A, Nei M (1995) Phylogenetic tests of the molecular clock and  
31 linearized trees. *Molecular Biology and Evolution*, **12**, 823-833.
- 32 Templeton AR, Boerwinkle E, Sing CF (1987) A cladistic analysis of phenotypic  
33 associations with haplotypes inferred from restriction endonuclease Mapping I. Basic theory  
34 and an analysis of alcohol dehydrogenase activity in *Drosophila*. *Genetics*, **117**, 343-351.
- 35 Templeton AR, Sing CF (1993) A Cladistic analysis of phenotypic associations with  
36 haplotypes inferred from restriction endonuclease mapping IV. Nested analyses with  
37 cladogram uncertainty and recombination, *Genetics*, **134**, 659-669.
- 38 Templeton AR (1998) Nested clade analyses of phylogeographic data: testing  
39 hypotheses about gene flow and population history. *Molecular Ecology*, **7**, 381-397.
- 40 Thompson JD, Gibson TJ, Plewniak F, Jeanmougin F (1997) The Clustal X Windows  
41 interface: flexible strategies for multiple sequence alignment aided by quality analysis tools.  
42 *Nucleic Acids Research*, **25**, 4876-4882.

- 1 Valladares-Padua C, Padua SM, Cullen L (2002) Within and surrounding the Morro  
2 do Diabo State Park: biological value, conflicts, mitigation and sustainable development  
3 alternatives. *Environmental Science & Policy*, **5**, 69–78.
- 4 Vasconcelos PM, Becker TA, Renne PR, Brimhall GH. 1992. Age and duration of  
5 weathering by  $^{40}\text{K}$ - $^{40}\text{Ar}$  and  $^{40}\text{Ar}/^{39}\text{Ar}$  analysis of potassium-manganese oxides. *Science*, **258**,  
6 451–455.
- 7 Xia X, Xie Z (2001) DAMBE: Data analysis in molecular biology and evolution.  
8 *Journal of Heredity*, **92**, 371-373.
- 9 Wüster W, Salomão MG, Duckett GJ, Thorpe RS, BBBSP (1999) Mitochondrial  
10 DNA phylogeny of *Bothrops atrox* species complex (Squamata: Serpentes: Viperidae).  
11 *Kaupia – Darmstädter Beiträge zur Naturgeschichte*, **8**, 135-144.
- 12 Wüster W, Salomão MG, Quijada-Mascareñas JA, Thorpe RS, BBBSP (2002) Origin  
13 and evolution of the South American pitviper fauna: evidence from mitochondrial DNA  
14 sequence analysis. In: *Biology of the vipers* (ed. Schuett GW, Höggren M, Douglas ME,  
15 Greene HW), pp. 111-128. Eagle Mountain Publishing, Eagle Mountain, Utah.
- 16 Zamudio KR, Greene HW (1997) Phylogeography of the bushmaster (*Lachesis muta*:  
17 Viperidae): implications for Neotropical biogeography, systematics and conservation.  
18 *Biological Journal of the Linnean Society*, **62**, 421-442.

1 Figure Legends

2 Fig. 1 Geographical distribution of the *Bothrops jararaca* complex with sampling localities  
3 for this study. Light gray area represents the geographical distribution of *Bothrops jararaca*.  
4 Squares indicate individuals from the northern clade and crosses indicate individuals from the  
5 southern clade. Solid line indicates the main genetic barrier as defined by SAMOVA.  
6 Brazilian states: RS – Rio Grande do Sul, SC – Santa Catarina, PR – Paraná, SP – São Paulo,  
7 RJ – Rio de Janeiro, ES – Espírito Santo, MG – Minas Gerais, MS - Mato Grosso do Sul, and  
8 GO - Goiás.

9

10 Fig. 2 Isometric plots of the number of pairwise transitions against Tamura-Nei distances  
11 showing levels of saturation at all codon positions (open squares) and 3rd codon position  
12 (black triangles) in mtDNA sequences of *B. jararaca* group. Circumference indicates only the  
13 ingroup.

14

15 Fig. 3 The phyML tree with TN+I model for *cyt b* mitochondrial gene in *B. jararaca* complex  
16 and outgroups. Letters and numbers in the terminals represents the haplotype number (S from  
17 southern clade and N from northern clade) and the Brazilian states (RS – Rio Grande do Sul,  
18 SC – Santa Catarina, PR – Paraná, SP – São Paulo, RJ – Rio de Janeiro, ES – Espírito Santo,  
19 and MG – Minas Gerais). Black bars indicate haplotypes from the southern group, open bars  
20 indicate haplotypes from northern group and crossed square indicate haplotypes shares by  
21 southern and northern groups. Numbers near internal branches are support values from  
22 phyML, Treefinder, Tree-puzzle, MetaPIGA, NJ, BI, MP and ML trees, respectively. (\*)  
23 value lower than 50%.

24

1 Fig. 4 Mismatch distributions for the (A) Northern clade; (B) Southern clade; (C) Whole  
2 distribution.

3

4 Fig. 5 Correlogram showing the coefficient of spatial autocorrelation for whole *B. jararaca*  
5 distribution (circles), southern groups (triangles) and northern groups (squares). \*,  $P < 0.05$ ,  
6 solid symbol,  $P < 0.001$ ; open symbol, non significant.

7

8 Fig. 6 Median-joining network showing the two clades within *B. jararaca*. Letters and  
9 numbers represent the haplotype number (S from southern clade and N from northern clade).

10

11 Fig. 7 Linearized neighbor joining tree showing the divergence time among clades and  
12 subclades. Numbers in italic indicate divergence time calculated using the medium value for  
13 substitution rates; numbers in the gray bars represent divergence time calculated using our  
14 extreme substitution rates (0.47% and 1.44%  $\text{my}^{-1}$ ).

15

1 Table 1 Summary statistics observed in southern group (SG), northern group (NG) and the  
 2 whole distribution of *Bothrops jararaca* (SG/NG).

|              | <b>N</b> | <b>S</b> | <b>h</b> | <b>Hd</b>     | $\pi$             | <b>D</b> | <b>F'</b> | <b>D'</b> |
|--------------|----------|----------|----------|---------------|-------------------|----------|-----------|-----------|
| <b>SG</b>    | 76       | 32       | 15       | 0.862 ± 0.022 | 0.00761 ± 0.00074 | -0.99754 | -2.71499* | -3.05309* |
| <b>NG</b>    | 95       | 37       | 31       | 0.904 ± 0.021 | 0.01081 ± 0.00065 | -0.27207 | 0.16639   | 0.40752   |
| <b>whole</b> | 171      | 61       | 45       | 0.943 ± 0.008 | 0.02068 ± 0.00047 | 0.47881  | 0.58120   | 0.48785   |

3 N, number of sequences; S, number of variable sites; h, number of haplotypes; Hd, haplotype  
 4 diversity;  $\pi$ , nucleotide diversity; D, Tajimas' D; F', Fu and Li's F; D', Fu and Li's D. \* P <  
 5 0.05.

1 Table 2 Demographic Inference chain results from the nested clade analysis.

| Clade           | Chain of inference | Inference  |
|-----------------|--------------------|--|
| Total Cladogram | 1-2-3-5-15-no      | Past Fragmentation   |
| Northern Clade  | 1-2-11-12-13-Yes   | Contiguous Range Expansion   |
| Nc5             | 1-No               | The null hypothesis cannot be rejected   |
| Nc1+Nc2         | 1-2-3-4-No         | Sampling inadequate to discriminate between Isolation by distance X Long distance dispersion |
| Southern Clade  | 1-2-3-5-6-7-Yes    | Restricted gene flow with isolation by distance  |
| Sc1             | 1-2-11-17-4-No     | Restricted gene flow with isolation by distance  |
| Sc2             | 1-No               | The null hypothesis cannot be rejected   |

2

Fig. 1

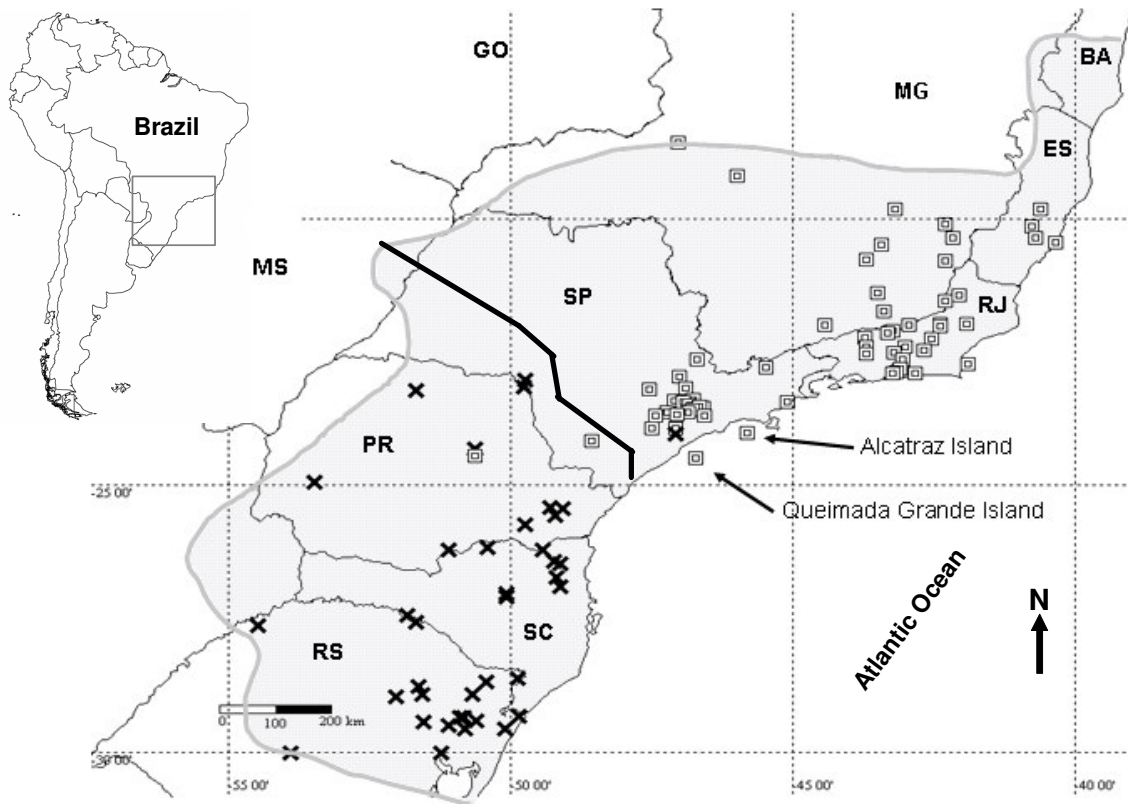


Fig. 2

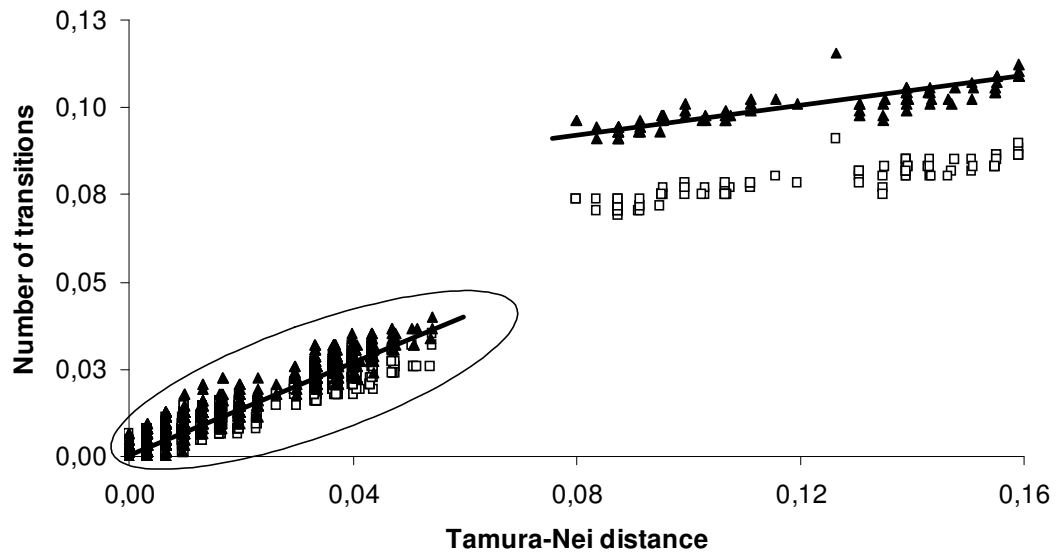




Fig. 03

phyML/Treefinder/Tree-puzzle/MetaPiga  
 NJ/BI/MP/ML

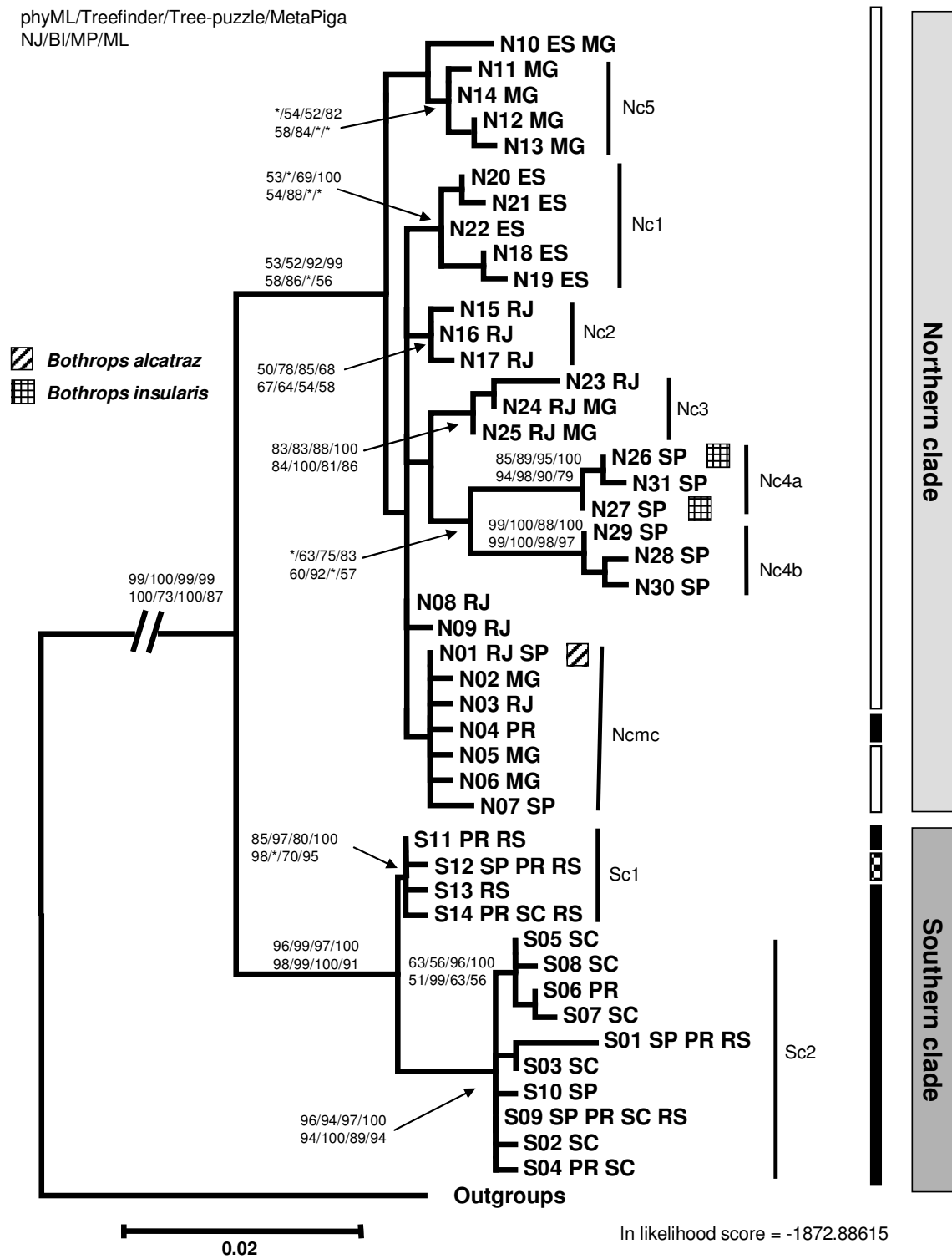


Fig. 4

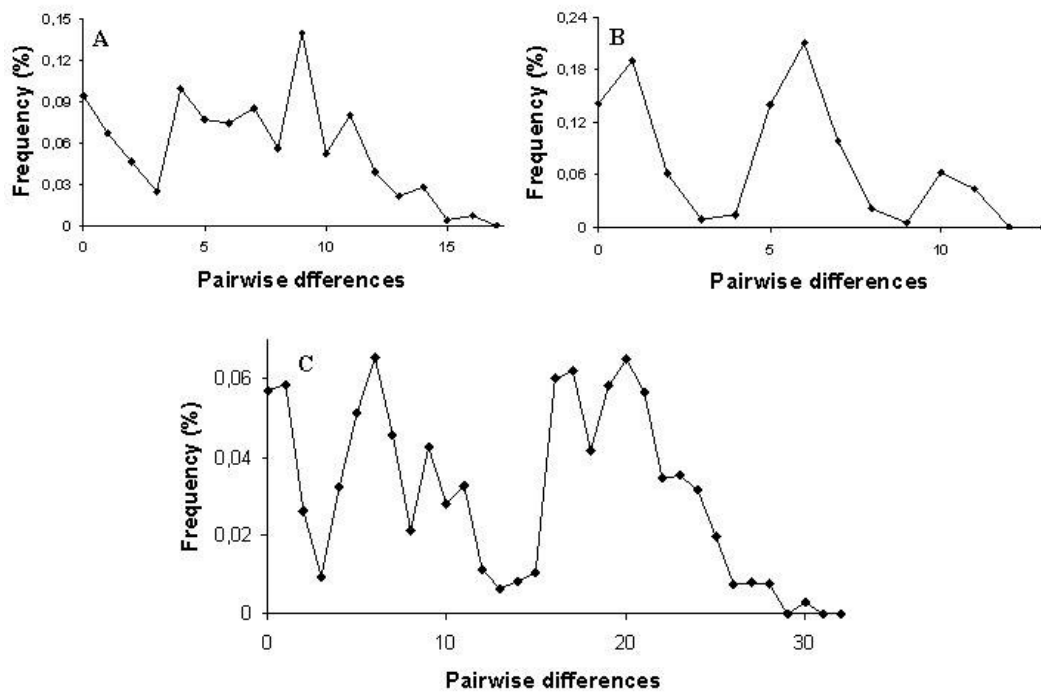


Fig. 5

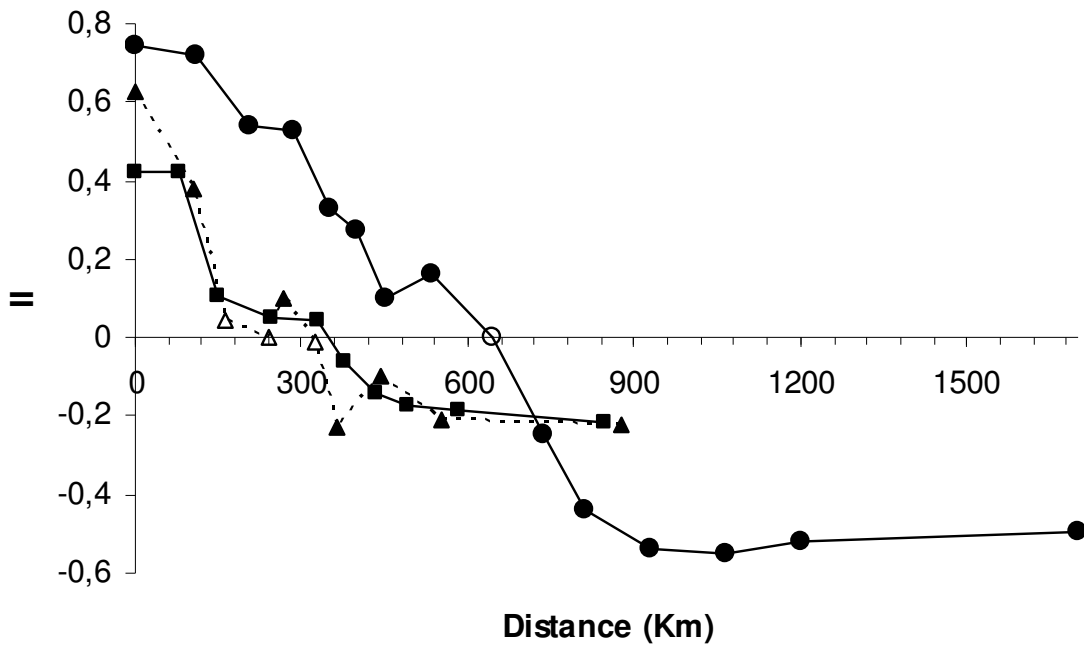
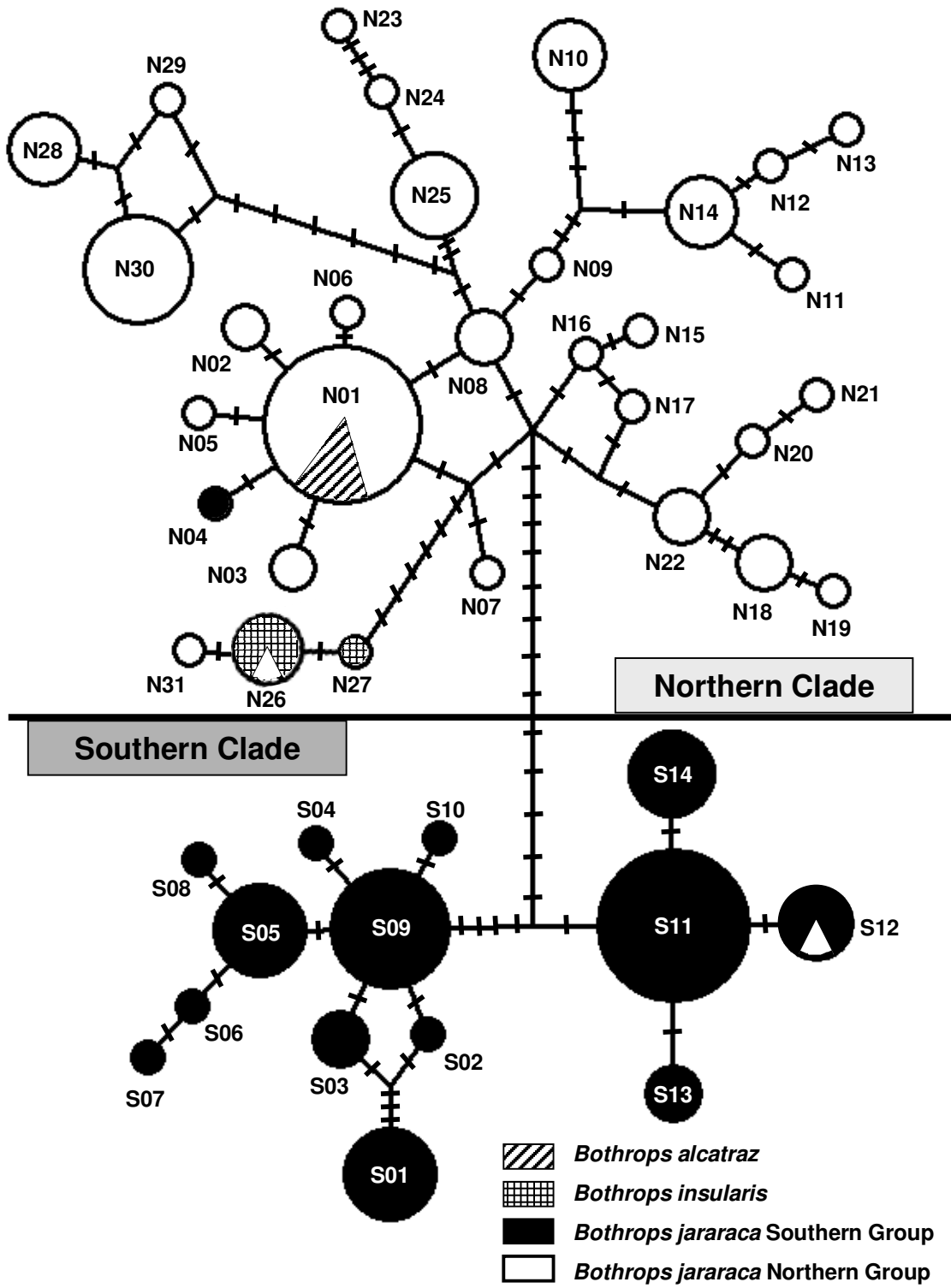


Fig. 06





## Appendix 1

Localities, haplotypes and vouchers for specimens used in this paper.

| Nh  | N°CBGM | Species                  | N° voucher | Localities name        | states | Longitude   | Latitude    |
|-----|--------|--------------------------|------------|------------------------|--------|-------------|-------------|
| S01 | bj160  | <i>Bothrops jararaca</i> | CMM - 21   | Telêmaco Borba         | PR     | 50°37'02''W | 24°20'15''S |
| S01 | bj161  | <i>Bothrops jararaca</i> | CMM - 22   | Telêmaco Borba         | PR     | 50°37'02''W | 24°20'15''S |
| S01 | bj162  | <i>Bothrops jararaca</i> | CMM - 23   | Telêmaco Borba         | PR     | 50°37'02''W | 24°20'15''S |
| S01 | bj163  | <i>Bothrops jararaca</i> | CMM - 24   | Telêmaco Borba         | PR     | 50°37'02''W | 24°20'15''S |
| S01 | bj166  | <i>Bothrops jararaca</i> | CMM - 27   | Astorga                | PR     | 51°39'53''W | 23°14'22''S |
| S01 | bj195  | <i>Bothrops jararaca</i> | CMM - 56   | Cachoeira do Sul       | RS     | 53°53'46''W | 30°02'22''S |
| S01 | bj225  | <i>Bothrops jararaca</i> | CMM - 88   | Machadinho             | RS     | 51°40'00''W | 27°34'25''S |
| S01 | bj327  | <i>Bothrops jararaca</i> | IB - *     | Chavantes              | SP     | 49°43'02''W | 23°02'00''S |
| S02 | bj230  | <i>Bothrops jararaca</i> | IB - 67665 | Blumenau               | SC     | 49°05'48''W | 26°55'05''S |
| S03 | bj237  | <i>Bothrops jararaca</i> | IB - *     | Canoinhas              | SC     | 50°23'38''W | 26°10'52''S |
| S03 | bj238  | <i>Bothrops jararaca</i> | IB - 68554 | Canoinhas              | SC     | 50°23'38''W | 26°10'52''S |
| S03 | bj240  | <i>Bothrops jararaca</i> | IB - 68559 | Canoinhas              | SC     | 50°23'38''W | 26°10'52''S |
| S04 | bj091  | <i>Bothrops jararaca</i> | IB - 66557 | Jaraguá do Sul         | SC     | 49°05'50''W | 26°29'01''S |
| S04 | bj168  | <i>Bothrops jararaca</i> | CMM - 29   | Curitiba               | PR     | 49°17'03''W | 25°25'50''S |
| S05 | bj090  | <i>Bothrops jararaca</i> | IB - 66567 | Jaraguá do Sul         | SC     | 49°05'50''W | 26°29'01''S |
| S05 | bj092  | <i>Bothrops jararaca</i> | IB - 66556 | Jaraguá do Sul         | SC     | 49°05'50''W | 26°29'01''S |
| S05 | bj093  | <i>Bothrops jararaca</i> | IB - 65314 | Corupa                 | SC     | 49°13'13''W | 26°26'47''S |
| S05 | bj095  | <i>Bothrops jararaca</i> | IB - 65313 | Corupa                 | SC     | 49°13'13''W | 26°26'47''S |
| S05 | bj148  | <i>Bothrops jararaca</i> | CMM - 9    | São Bento do Sul       | SC     | 49°24'36''W | 26°13'06''S |
| S05 | bj150  | <i>Bothrops jararaca</i> | CMM - 11   | São Bento do Sul       | SC     | 49°24'36''W | 26°13'06''S |
| S05 | bj153  | <i>Bothrops jararaca</i> | CMM - 14   | Pomerode               | SC     | 49°10'26''W | 26°45'16''S |
| S05 | bj217  | <i>Bothrops jararaca</i> | CMM - 80   | Piratuba               | SC     | 51°48'09''W | 72°70'00''S |
| S06 | bj175  | <i>Bothrops jararaca</i> | CMM - 36   | São José dos Pinhais   | PR     | 49°10'44''W | 25°34'39''S |
| S07 | bj154  | <i>Bothrops jararaca</i> | CMM - 15   | Pomerode               | SC     | 49°10'26''W | 26°45'16''S |
| S08 | bj094  | <i>Bothrops jararaca</i> | IB - 65323 | Corupa                 | SC     | 49°13'13''W | 26°26'47''S |
| S09 | bj087  | <i>Bothrops jararaca</i> | IB - 66809 | Guapiava               | SP     | 48°32'16''W | 24°11'12''S |
| S09 | bj088  | <i>Bothrops jararaca</i> | IB - 66794 | Guapiava               | SP     | 48°32'16''W | 24°11'12''S |
| S09 | bj149  | <i>Bothrops jararaca</i> | CMM - 10   | São Bento do Sul       | SC     | 49°24'36''W | 26°13'06''S |
| S09 | bj152  | <i>Bothrops jararaca</i> | CMM - 13   | Pomerode               | SC     | 49°10'26''W | 26°45'16''S |
| S09 | bj167  | <i>Bothrops jararaca</i> | CMM - 28   | Astorga                | PR     | 51°39'53''W | 23°14'22''S |
| S09 | bj169  | <i>Bothrops jararaca</i> | CMM - 30   | União da Vitória       | PR     | 51°04'03''W | 26°14'00''S |
| S09 | bj199  | <i>Bothrops jararaca</i> | CMM - 60   | Timbó do Sul           | SC     | 49°51'45''W | 28°49'17''S |
| S09 | bj212  | <i>Bothrops jararaca</i> | CMM - 75   | Veranópolis            | RS     | 51°32'55''W | 28°56'19''S |
| S09 | bj228  | <i>Bothrops jararaca</i> | IB - 67666 | Blumenau               | SC     | 49°05'48''W | 26°55'05''S |
| S09 | bj229  | <i>Bothrops jararaca</i> | IB - 67663 | Blumenau               | SC     | 49°05'48''W | 26°55'05''S |
| S09 | bj231  | <i>Bothrops jararaca</i> | IB - 67662 | Blumenau               | SC     | 49°05'48''W | 26°55'05''S |
| S09 | bj235  | <i>Bothrops jararaca</i> | IB - *     | Canoinhas              | SC     | 50°23'38''W | 26°10'52''S |
| S09 | bj328  | <i>Bothrops jararaca</i> | IB - 69878 | Canoinhas              | SC     | 50°23'38''W | 26°10'52''S |
| S10 | bj089  | <i>Bothrops jararaca</i> | IB - 66792 | Guapiava               | SP     | 48°32'16''W | 24°11'12''S |
| S11 | bj146  | <i>Bothrops jararaca</i> | CMM - 7    | Ribeirão Claro         | PR     | 49°44'00''W | 23°10'04''S |
| S11 | bj171  | <i>Bothrops jararaca</i> | CMM - 32   | Curitiba               | PR     | 49°17'03''W | 25°25'50''S |
| S11 | bj177  | <i>Bothrops jararaca</i> | CMM - 38   | Nova Petrópolis        | RS     | 51°37'01''W | 27°07'00''S |
| S11 | bj178  | <i>Bothrops jararaca</i> | CMM - 39   | Nova Petrópolis        | RS     | 51°37'01''W | 27°07'00''S |
| S11 | bj180  | <i>Bothrops jararaca</i> | CMM - 41   | Nova Petrópolis        | RS     | 51°37'01''W | 27°07'00''S |
| S11 | bj182  | <i>Bothrops jararaca</i> | CMM - 43   | Nova Petrópolis        | RS     | 51°37'01''W | 27°07'00''S |
| S11 | bj186  | <i>Bothrops jararaca</i> | CMM - 47   | Nova Petrópolis        | RS     | 51°37'01''W | 27°07'00''S |
| S11 | bj188  | <i>Bothrops jararaca</i> | CMM - 49   | São Francisco de Paula | RS     | 50°34'45''W | 29°26'35''S |
| S11 | bj189  | <i>Bothrops jararaca</i> | CMM - 50   | São Francisco de Paula | RS     | 50°34'45''W | 29°26'35''S |
| S11 | bj196  | <i>Bothrops jararaca</i> | CMM - 57   | Canela                 | RS     | 50°48'34''W | 29°21'48''S |
| S11 | bj197  | <i>Bothrops jararaca</i> | CMM - 58   | São Francisco de Paula | RS     | 50°34'45''W | 29°26'35''S |
| S11 | bj198  | <i>Bothrops jararaca</i> | CMM - 59   | Gramado                | RS     | 50°52'38''W | 29°22'33''S |
| S11 | bj200  | <i>Bothrops jararaca</i> | CMM - 61   | Dom Pedro de Alcântara | RS     | 49°50'57''W | 29°20'59''S |
| S11 | bj203  | <i>Bothrops jararaca</i> | CMM - 64   | Canela                 | RS     | 50°48'34''W | 29°21'48''S |
| S11 | bj204  | <i>Bothrops jararaca</i> | CMM - 65   | Porto Alegre           | RS     | 51°13'01''W | 30°02'23''S |
| S11 | bj205  | <i>Bothrops jararaca</i> | CMM - 67   | Terra de Areia         | RS     | 50°04'06''W | 29°35'00''S |
| S11 | bj209  | <i>Bothrops jararaca</i> | CMM - 72   | Tucunduva              | RS     | 54°26'59''W | 27°39'02''S |

|     |       |                          |                 |                         |    |            |            |
|-----|-------|--------------------------|-----------------|-------------------------|----|------------|------------|
| S11 | bj213 | <i>Bothrops jararaca</i> | CMM - 76        | Igrejinha               | RS | 50°47'38"W | 29°34'45"S |
| S11 | bj216 | <i>Bothrops jararaca</i> | CMM - 79        | Morro Reuter            | RS | 51°05'01"W | 29°31'57"S |
| S11 | bj219 | <i>Bothrops jararaca</i> | CMM - 82        | Salvador do Sul         | RS | 51°31'00"W | 29°27'04"S |
| S11 | bj220 | <i>Bothrops jararaca</i> | CMM - 83        | Salvador do Sul         | RS | 51°31'00"W | 29°27'04"S |
| S12 | bj144 | <i>Bothrops jararaca</i> | CMM - 5         | Juquitiba               | SP | 47°03'04"W | 23°57'00"S |
| S12 | bj174 | <i>Bothrops jararaca</i> | CMM - 35        | Piraquara               | PR | 49°03'53"W | 25°27'09"S |
| S12 | bj192 | <i>Bothrops jararaca</i> | CMM - 53        | Cazuza Ferreira         | RS | 50°39'17"W | 28°55'59"S |
| S12 | bj218 | <i>Bothrops jararaca</i> | CMM - 81        | Bom Jesus               | RS | 50°24'03"W | 28°41'58"S |
| S12 | bj221 | <i>Bothrops jararaca</i> | CMM - 84        | Anta Gorda              | RS | 52°01'06"W | 28°59'02"S |
| S13 | bj193 | <i>Bothrops jararaca</i> | CMM - 54        | Cazuza Ferreira         | RS | 50°39'17"W | 28°55'59"S |
| S13 | bj194 | <i>Bothrops jararaca</i> | CMM - 55        | Cazuza Ferreira         | RS | 50°39'17"W | 28°55'59"S |
| S13 | bj207 | <i>Bothrops jararaca</i> | CMM - 70        | Machadinho              | RS | 51°40'00"W | 27°34'25"S |
| S14 | bj170 | <i>Bothrops jararaca</i> | CMM - 31        | Lapa                    | PR | 49°43'52"W | 25°45'53"S |
| S14 | bj172 | <i>Bothrops jararaca</i> | CMM - 33        | Cascavel                | PR | 53°27'08"W | 24°58'02"S |
| S14 | bj202 | <i>Bothrops jararaca</i> | CMM - 63        | Tucunduva               | RS | 54°26'59"W | 27°39'02"S |
| S14 | bj210 | <i>Bothrops jararaca</i> | CMM - 73        | Tuncunuva               | RS | 54°26'59"W | 27°39'02"S |
| S14 | bj211 | <i>Bothrops jararaca</i> | CMM - 74        | Nova Prata              | RS | 51°36'05"W | 28°47'04"S |
| S14 | bj232 | <i>Bothrops jararaca</i> | IB - 68275      | Fraiburgo               | SC | 50°03'34"W | 27°03'20"S |
| S14 | bj233 | <i>Bothrops jararaca</i> | IB - 68276      | Fraiburgo               | SC | 50°03'34"W | 27°03'20"S |
| S30 | bj157 | <i>Bothrops jararaca</i> | CMM - 18        | Juquitiba               | SP | 47°03'04"W | 23°57'00"S |
| N01 | bz001 | <i>Bothrops alcatraz</i> | IB - 00061C0EBA | Ilha de Alcatrazes      | SP | 45°46'35"W | 24°01'50"S |
| N01 | bz002 | <i>Bothrops alcatraz</i> | IB - 0061C17E9  | Ilha de Alcatrazes      | SP | 45°46'35"W | 24°01'50"S |
| N01 | bz003 | <i>Bothrops alcatraz</i> | IB - 000618E21E | Ilha de Alcatrazes      | SP | 45°46'35"W | 24°01'50"S |
| N01 | bz004 | <i>Bothrops alcatraz</i> | IB - 000610D8E2 | Ilha de Alcatrazes      | SP | 45°46'35"W | 24°01'50"S |
| N01 | bz005 | <i>Bothrops alcatraz</i> | IB - 00061C0D7D | Ilha de Alcatrazes      | SP | 45°46'35"W | 24°01'50"S |
| N01 | bj109 | <i>Bothrops jararaca</i> | IVB - 060/02    | Nova Friburgo           | RJ | 42°31'39"W | 22°15'49"S |
| N01 | bj110 | <i>Bothrops jararaca</i> | IVB - 186/00    | Niteroi                 | RJ | 43°07'55"W | 22°54'11"S |
| N01 | bj111 | <i>Bothrops jararaca</i> | IVB - 75/99     | Niteroi                 | RJ | 43°07'55"W | 22°54'11"S |
| N01 | bj114 | <i>Bothrops jararaca</i> | IVB - 184/02    | Teresópolis             | RJ | 42°58'30"W | 22°24'57"S |
| N01 | bj116 | <i>Bothrops jararaca</i> | IVB - 115/02    | Rio de Janeiro          | RJ | 43°11'54"W | 22°54'34"S |
| N01 | bj118 | <i>Bothrops jararaca</i> | IVB - 129/99    | Niteroi                 | RJ | 43°07'55"W | 22°54'11"S |
| N01 | bj119 | <i>Bothrops jararaca</i> | IVB - 31/01     | Valença                 | RJ | 43°42'16"W | 22°14'44"S |
| N01 | bj120 | <i>Bothrops jararaca</i> | IVB - 16/01     | Teresópolis             | RJ | 42°58'30"W | 22°24'57"S |
| N01 | bj130 | <i>Bothrops jararaca</i> | IVB - 85/99     | São Gonçalo             | RJ | 43°04'22"W | 22°50'07"S |
| N01 | bj138 | <i>Bothrops jararaca</i> | IVB - 195/00    | Magé                    | RJ | 43°02'23"W | 22°39'38"S |
| N01 | bj139 | <i>Bothrops jararaca</i> | IVB - 146/01    | Santa Maria Madalena    | RJ | 42°01'38"W | 21°57'29"S |
| N01 | bj140 | <i>Bothrops jararaca</i> | IVB - 61/01     | Maricá                  | RJ | 42°49'05"W | 22°54'59"S |
| N01 | bj227 | <i>Bothrops jararaca</i> | IB - *          | Monte Alegre do Sul     | SP | 46°41'03"W | 22°39'55"S |
| N01 | bj244 | <i>Bothrops jararaca</i> | IBV - 183/01    | Petrópolis              | RJ | 43°11'08"W | 22°31'13"S |
| N01 | bj257 | <i>Bothrops jararaca</i> | IVB - 331/02    | Niterói                 | RJ | 43°07'55"W | 22°54'11"S |
| N01 | bj258 | <i>Bothrops jararaca</i> | IVB - 210/02    | Niterói                 | RJ | 43°07'55"W | 22°54'11"S |
| N01 | bj288 | <i>Bothrops jararaca</i> | IB - *          | Jundiá                  | SP | 46°52'24"W | 23°11'58"S |
| N01 | bj292 | <i>Bothrops jararaca</i> | IB - *          | Atibaia                 | SP | 46°33'25"W | 23°07'26"S |
| N01 | bj300 | <i>Bothrops jararaca</i> | IB - 68793      | Monte Alegre do Sul     | SP | 46°41'03"W | 22°39'55"S |
| N01 | bj301 | <i>Bothrops jararaca</i> | IB - 68790      | Valinhos                | SP | 46°59'28"W | 22°58'27"S |
| N02 | bj272 | <i>Bothrops jararaca</i> | FUNED - 9902    | Bocaina de Minas        | MG | 44°24'06"W | 22°10'02"S |
| N02 | bj274 | <i>Bothrops jararaca</i> | FUNED - 9934    | São Francisco da Gloria | MG | 42°16'00"W | 20°47'58"S |
| N03 | bj137 | <i>Bothrops jararaca</i> | IVB - 66/01     | Eng. Paulo de Frontin   | RJ | 43°40'58"W | 22°33'10"S |
| N03 | bj249 | <i>Bothrops jararaca</i> | IVB - 003/02    | Santa Cruz da Serra     | RJ | 42°17'04"W | 21°33'00"S |
| N04 | bj164 | <i>Bothrops jararaca</i> | CMM - 25        | Telêmaco Borba          | PR | 50°37'02"W | 24°20'15"S |
| N05 | bj285 | <i>Bothrops jararaca</i> | FUNED - *       | Paraíba do Sul          | MG | 43°17'33"W | 22°09'37"S |
| N06 | bj126 | <i>Bothrops jararaca</i> | IVB - 177/02    | Juiz de Fora            | MG | 43°21'19"W | 21°45'11"S |
| N07 | bj294 | <i>Bothrops jararaca</i> | IB - *          | Ubatuba                 | SP | 45°04'34"W | 23°27'09"S |
| N08 | bj117 | <i>Bothrops jararaca</i> | IVB - 202/01    | Vassouras               | RJ | 43°40'04"W | 22°24'37"S |
| N08 | bj133 | <i>Bothrops jararaca</i> | IVB - 185/02    | Petrópolis              | RJ | 43°11'08"W | 22°31'13"S |
| N08 | bj245 | <i>Bothrops jararaca</i> | IBV - 194/00    | Petrópolis              | RJ | 43°11'08"W | 22°31'13"S |
| N09 | bj135 | <i>Bothrops jararaca</i> | IVB - 179/01    | Areal - Três Rios       | RJ | 43°12'29"W | 22°06'57"S |
| N10 | bj100 | <i>Bothrops jararaca</i> | IB - 66959      | Santa Maria Jetiba      | ES | 40°44'00"W | 20°02'00"S |
| N10 | bj102 | <i>Bothrops jararaca</i> | IB - 67045      | Domingos Martins        | ES | 40°40'05"W | 20°21'59"S |
| N10 | bj103 | <i>Bothrops jararaca</i> | IB - 67014      | Domingos Martins        | ES | 40°40'05"W | 20°21'59"S |
| N10 | bj266 | <i>Bothrops jararaca</i> | FUNED - 9415    | Patos de Minas          | MG | 46°30'48"W | 18°35'21"S |
| N10 | bj269 | <i>Bothrops jararaca</i> | FUNED - 9502    | Santana do Monte        | MG | 43°41'03"W | 20°46'59"S |

|     |        |                              |                |                       |    |            |            |
|-----|--------|------------------------------|----------------|-----------------------|----|------------|------------|
| N11 | bj278  | <i>Bothrops jararaca</i>     | FUNED - 9925   | Matutina              | MG | 45°57'59"W | 19°13'02"S |
| N12 | bj267  | <i>Bothrops jararaca</i>     | FUNED - 9704   | João Monlevade        | MG | 43°09'24"W | 19°50'09"S |
| N13 | bj265  | <i>Bothrops jararaca</i>     | FUNED - 9901   | Santa Bárbara         | MG | 43°24'39"W | 19°58'22"S |
| N14 | bj268  | <i>Bothrops jararaca</i>     | FUNED - 9909   | Caputira              | MG | 42°16'04"W | 20°10'02"S |
| N14 | bj271  | <i>Bothrops jararaca</i>     | FUNED - 9919   | Matutina              | MG | 45°57'59"W | 19°13'02"S |
| N14 | bj276  | <i>Bothrops jararaca</i>     | FUNED - 9924   | Matutina              | MG | 45°57'59"W | 19°13'02"S |
| N14 | bj277  | <i>Bothrops jararaca</i>     | FUNED - 9922   | Matutina              | MG | 45°57'59"W | 19°13'02"S |
| N14 | bj279  | <i>Bothrops jararaca</i>     | FUNED - 9927   | Matutina              | MG | 45°57'59"W | 19°13'02"S |
| N15 | bj127  | <i>Bothrops jararaca</i>     | IVB - 190/02   | Campos Novos - Búzios | RJ | 41°53'00"W | 22°45'04"S |
| N16 | bj129  | <i>Bothrops jararaca</i>     | IVB - 86/99    | Búzios                | RJ | 41°53'00"W | 22°45'04"S |
| N17 | bj108  | <i>Bothrops jararaca</i>     | IB - B1329     | Barra do Pirai        | RJ | 43°49'31"W | 22°28'16"S |
| N18 | bj098  | <i>Bothrops jararaca</i>     | IB - 66970     | Santa Maria Jetiba    | ES | 40°44'00"W | 20°02'00"S |
| N18 | bj099  | <i>Bothrops jararaca</i>     | IB - 66953     | Santa Maria Jetiba    | ES | 40°44'00"W | 20°02'00"S |
| N18 | bj128  | <i>Bothrops jararaca</i>     | IVB - 53/99    | Santa Tereza          | ES | 40°34'56"W | 19°56'11"S |
| N19 | bj123  | <i>Bothrops jararaca</i>     | IVB - 95/02    | Vitória               | ES | 40°18'25"W | 20°18'21"S |
| N20 | bj250  | <i>Bothrops jararaca</i>     | IVB - 133/03   | Fazenda Santa Maria   | ES | 40°40'05"W | 20°21'59"S |
| N22 | bj104  | <i>Bothrops jararaca</i>     | IB - 67053     | Domingos Martins      | ES | 40°40'05"W | 20°21'59"S |
| N22 | bj115  | <i>Bothrops jararaca</i>     | IVB - 094/02   | Vitória               | ES | 40°18'25"W | 20°18'21"S |
| N22 | bj262  | <i>Bothrops jararaca</i>     | IVB - *        | Fazenda Santa Maria   | ES | 40°40'05"W | 20°21'59"S |
| N22 | bj263  | <i>Bothrops jararaca</i>     | IVB - *        | Fazenda Santa Maria   | ES | 40°40'05"W | 20°21'59"S |
| N23 | bj113  | <i>Bothrops jararaca</i>     | IVB - 222/01   | Niteroi               | RJ | 43°07'55"W | 22°54'11"S |
| N24 | bj121  | <i>Bothrops jararaca</i>     | IVB - 162/00   | São João do Manhaçu   | MG | 42°08'57"W | 20°23'03"S |
| N25 | bj125  | <i>Bothrops jararaca</i>     | IVB - 268/02   | Cachoeira de Macacu   | RJ | 42°39'09"W | 22°29'14"S |
| N25 | bj131  | <i>Bothrops jararaca</i>     | IVB - 117/99   | Cantagalo             | RJ | 42°21'54"W | 21°59'03"S |
| N25 | bj132  | <i>Bothrops jararaca</i>     | IVB - 166/01   | Sapucai               | RJ | 42°55'04"W | 22°00'27"S |
| N25 | bj261  | <i>Bothrops jararaca</i>     | IVB - 277/02   | Cordeiro              | RJ | 42°21'49"W | 22°02'06"S |
| N25 | bj270  | <i>Bothrops jararaca</i>     | FUNED - 9916   | Juiz de Fora          | MG | 43°21'19"W | 21°45'11"S |
| N25 | bj283  | <i>Bothrops jararaca</i>     | FUNED - *      | Rio Espera            | MG | 43°29'05"W | 20°50'57"S |
| N25 | bj284  | <i>Bothrops jararaca</i>     | FUNED - *      | Rio Espera            | MG | 43°29'05"W | 20°50'57"S |
| N26 | bis002 | <i>Bothrops insularis</i>    | IB - *         | Ilha Queimada Grande  | SP | 46°42'00"W | 24°30'00"S |
| N26 | bis003 | <i>Bothrops insularis</i>    | IB - KZ952     | Ilha Queimada Grande  | SP | 46°42'00"W | 24°30'00"S |
| N26 | bis004 | <i>Bothrops insularis</i>    | IB - KZ961     | Ilha Queimada Grande  | SP | 46°42'00"W | 24°30'00"S |
| N26 | bis005 | <i>Bothrops insularis</i>    | IB - KZ950     | Ilha Queimada Grande  | SP | 46°42'00"W | 24°30'00"S |
| N26 | bis006 | <i>Bothrops insularis</i>    | IB - KZ951     | Ilha Queimada Grande  | SP | 46°42'00"W | 24°30'00"S |
| N26 | bis007 | <i>Bothrops insularis</i>    | IB - KZ959     | Ilha Queimada Grande  | SP | 46°42'00"W | 24°30'00"S |
| N26 | bj010  | <i>Bothrops jararaca</i>     | IB - *         | São Bernardo do Campo | SP | 46°32'39"W | 23°42'45"S |
| N27 | bis001 | <i>Bothrops insularis</i>    | IB - *         | Ilha Queimada Grande  | SP | 46°42'00"W | 24°30'00"S |
| N28 | bj009  | <i>Bothrops jararaca</i>     | IB - *         | Araçariгуama          | SP | 47°04'09"W | 23°26'00"S |
| N28 | bj239  | <i>Bothrops jararaca</i>     | IB - *         | Ribeirão Grande       | SP | 45°27'03"W | 22°47'58"S |
| N28 | bj289  | <i>Bothrops jararaca</i>     | IB - *         | Piedade               | SP | 47°24'41"W | 23°42'44"S |
| N28 | bj295  | <i>Bothrops jararaca</i>     | IB - *         | Ibiuna                | SP | 47°13'06"W | 23°39'02"S |
| N28 | bj297  | <i>Bothrops jararaca</i>     | IB - Bjf001-15 | Caucaia do Alto       | SP | 47°02'00"W | 23°40'57"S |
| N29 | bj287  | <i>Bothrops jararaca</i>     | IB - *         | Tapiraí               | SP | 47°28'59"W | 23°57'05"S |
| N30 | bj032  | <i>Bothrops jararaca</i>     | IB - 67546     | Porto Feliz           | SP | 47°31'14"W | 23°12'43"S |
| N30 | bj143  | <i>Bothrops jararaca</i>     | CMM - 4        | Juquitiba             | SP | 47°03'04"W | 23°57'00"S |
| N30 | bj236  | <i>Bothrops jararaca</i>     | IB - CN102     | Ribeirão Grande       | SP | 45°27'03"W | 22°47'58"S |
| N30 | bj286  | <i>Bothrops jararaca</i>     | IB - *         | Taboão da Serra       | SP | 46°46'08"W | 23°36'11"S |
| N30 | bj290  | <i>Bothrops jararaca</i>     | IB - *         | Santana do Paranaíba  | SP | 46°55'05"W | 23°26'59"S |
| N30 | bj291  | <i>Bothrops jararaca</i>     | IB - *         | São Paulo             | SP | 46°37'42"W | 23°32'01"S |
| N30 | bj296  | <i>Bothrops jararaca</i>     | IB - *         | Carapicuíba           | SP | 46°48'12"W | 23°31'11"S |
| N30 | bj298  | <i>Bothrops jararaca</i>     | IB - 9788      | Embú                  | SP | 46°50'26"W | 23°38'56"S |
| N30 | bj299  | <i>Bothrops jararaca</i>     | IB - *         | Perus                 | SP | 46°44'48"W | 23°24'47"S |
| N31 | bj329  | <i>Bothrops jararaca</i>     | IB - 69882     | São Bernardo do Campo | SP | 46°32'39"W | 23°42'45"S |
| #   | be001  | <i>Bothrops erythromelas</i> | IB - *         | #                     | #  | #          | #          |

Nh, number of haplotypes; S, southern haplotypes; N, northern haplotypes; N°CBGM, tissue collection number of Centro de Biologia Genômica e Molecular - PUCRS; IB, Instituto Butantan; CMM, Markus Monzel tissue collection; FUNED, Fundação Ezequiel Dias; IVB, Instituto Vital Brazil; \*, no voucher number; #, not available. Brazilian states: RS – Rio Grande do Sul, SC – Santa Catarina, PR – Paraná, SP – São Paulo, RJ – Rio de Janeiro, ES – Espírito Santo, MG – Minas Gerais.